

KEYPLAN 1:2500

- ① * Bursan's Head OFFICE
- Additional Full lgt. cabinet with fix shelving for ARCHFILE WITH CABINET POOR. WITH LOCKSET.
- ② - OPEN FIX SHELVING FOR ARCHFILE.

Jocelyn LEE
19/4/16

ARIANI DENI
19/4/2016
* STUDENT RECORD.

- ① metal filing drawers
- ② metal cabinet
- LOOSE FURNITURE

BLOCK A GROUND FLOOR
REFERENCE FURNITURE LAYOUT PLAN
SCALE 1:150

TENDER DRAWING

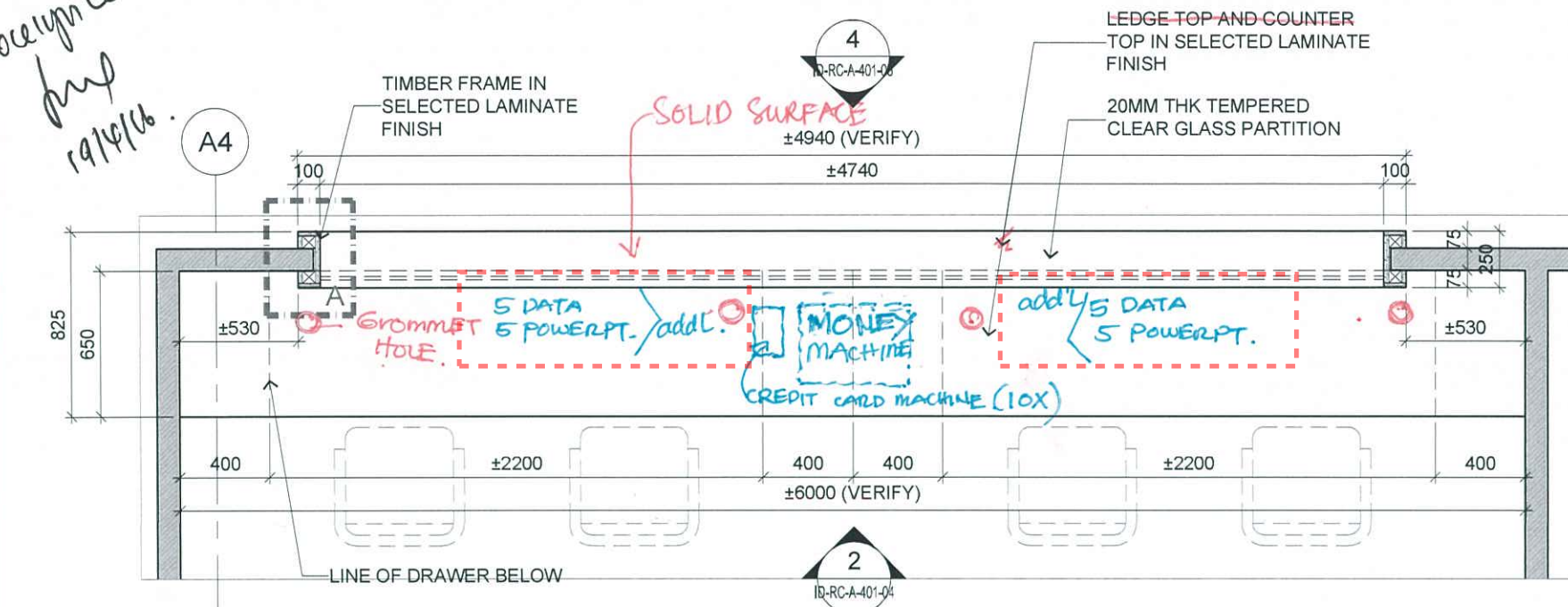
Job Title	Senior Vice President	TAN PHENG CHEE	Drawn By	TEAM	Date:-
INTERIOR DESIGN WORKS FOR PROPOSED KDU PENANG @ BATU KAWAN, PENANG MALAYSIA	Vice President	PATRICK TAN	Checked By	BETH	Date:-
Drawing Title	Principal Architectural Associate	-	Project Code :	Drawing No. :	REV. Scale : 1:150
REFERENCE FURNITURE LAYOUT PLAN BLOCK A GROUND FLOOR	Architectural Associate	-	P5679	ID-FL-A-201-01	- CAD Ref.
	Principal Interior Designer	BETH SONCUYA			



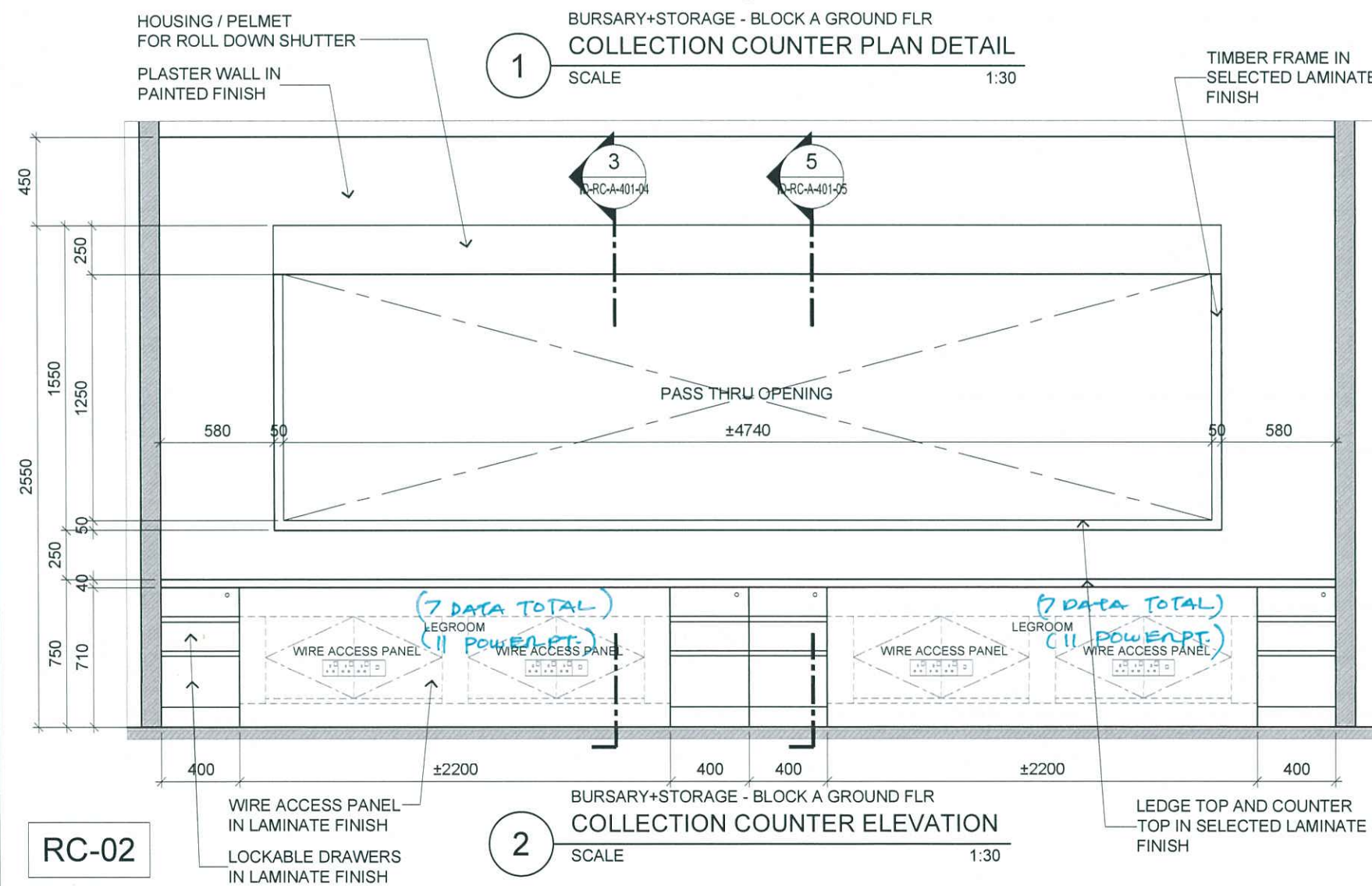
ARCHITECTURE GROUP-STUDIO A
CPG CONSULTANTS PTE LTD
1 GATEWAY DRIVE #25-01
WESTGATE TOWER, SINGAPORE 608531
TEL: 6357 4888 FAX: 6357 4188

©2014, CPG Consultants Pte Ltd reserves all rights to these drawings, designs and/or any other data contained herein. No part of the said drawings, designs and/or other data may be reproduced, modified, transmitted or used in any form or by any means for any purpose without the prior written consent of CPG Consultants Pte Ltd other than the sole purpose for which such drawings, designs and/or other data are provided to licensed users on such terms as CPG Consultants Pte Ltd may prescribe.

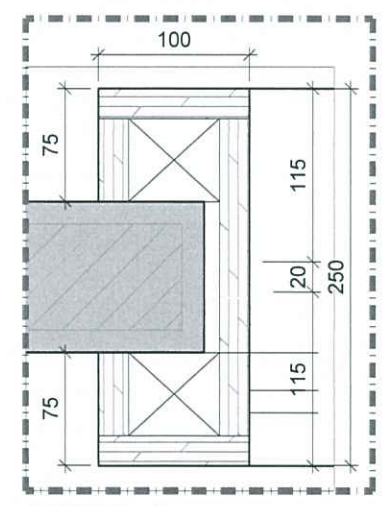
Joe up Lee
19/10/16



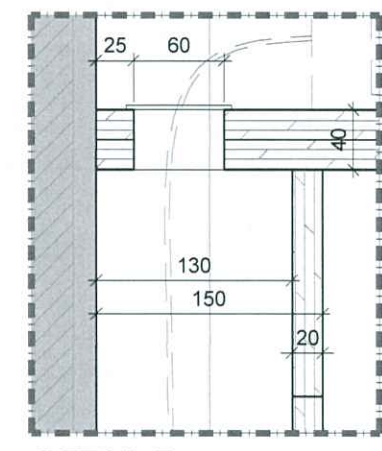
1 BURSARY+STORAGE - BLOCK A GROUND FLR
COLLECTION COUNTER PLAN DETAIL
SCALE 1:30



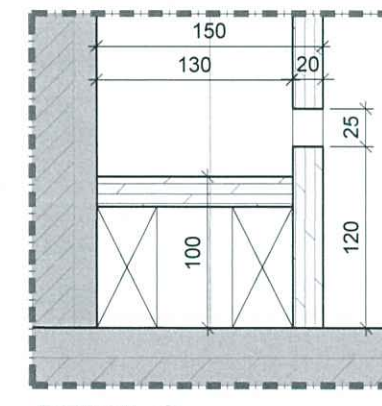
2 BURSARY+STORAGE - BLOCK A GROUND FLR
COLLECTION COUNTER ELEVATION
SCALE 1:30



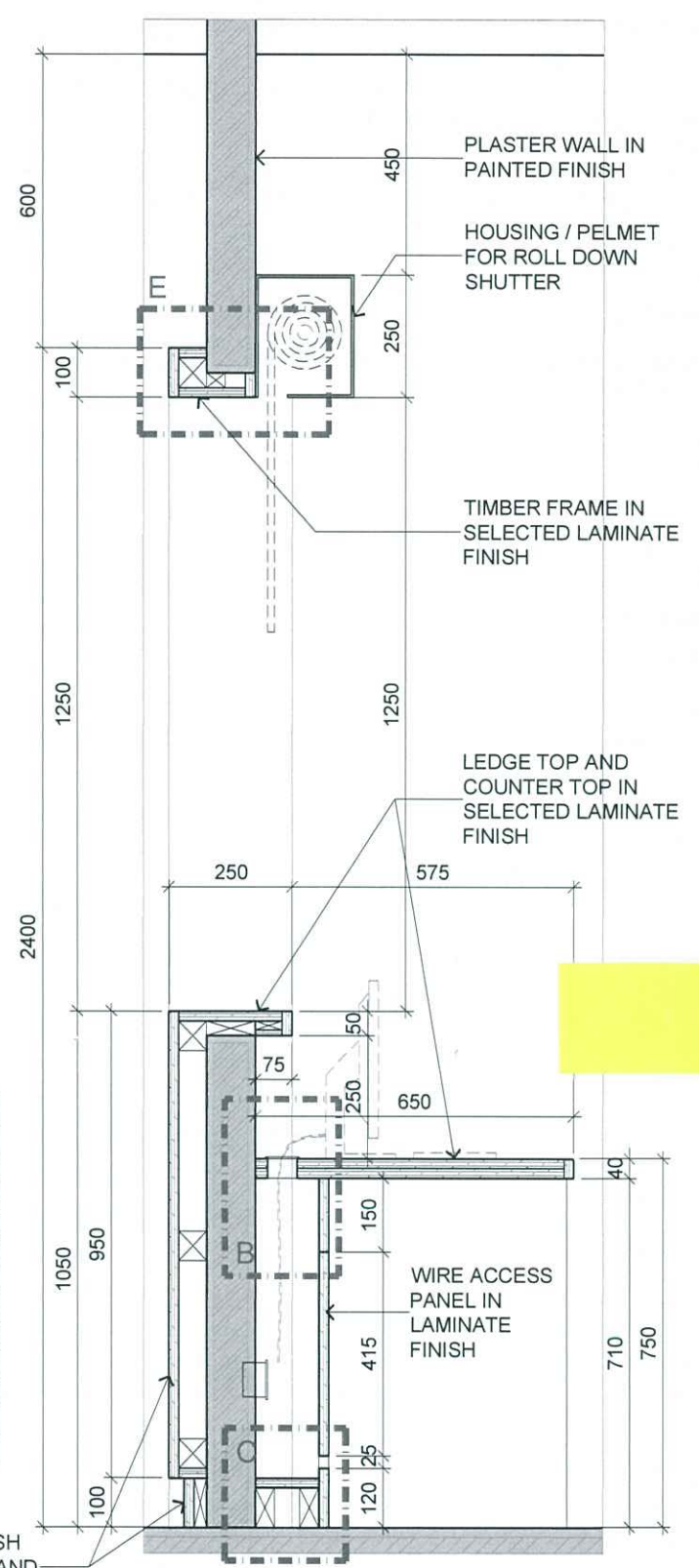
DETAIL A



DETAIL B



DETAIL C



3 BURSARY+STORAGE - BLOCK A GROUND FLR
COLLECTION COUNTER SECTION
SCALE 1:15

RC-02



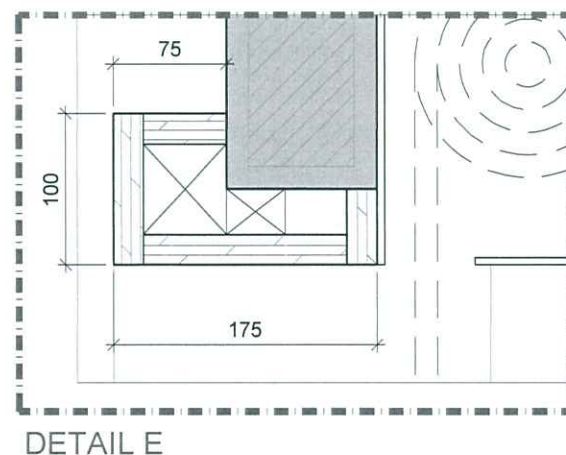
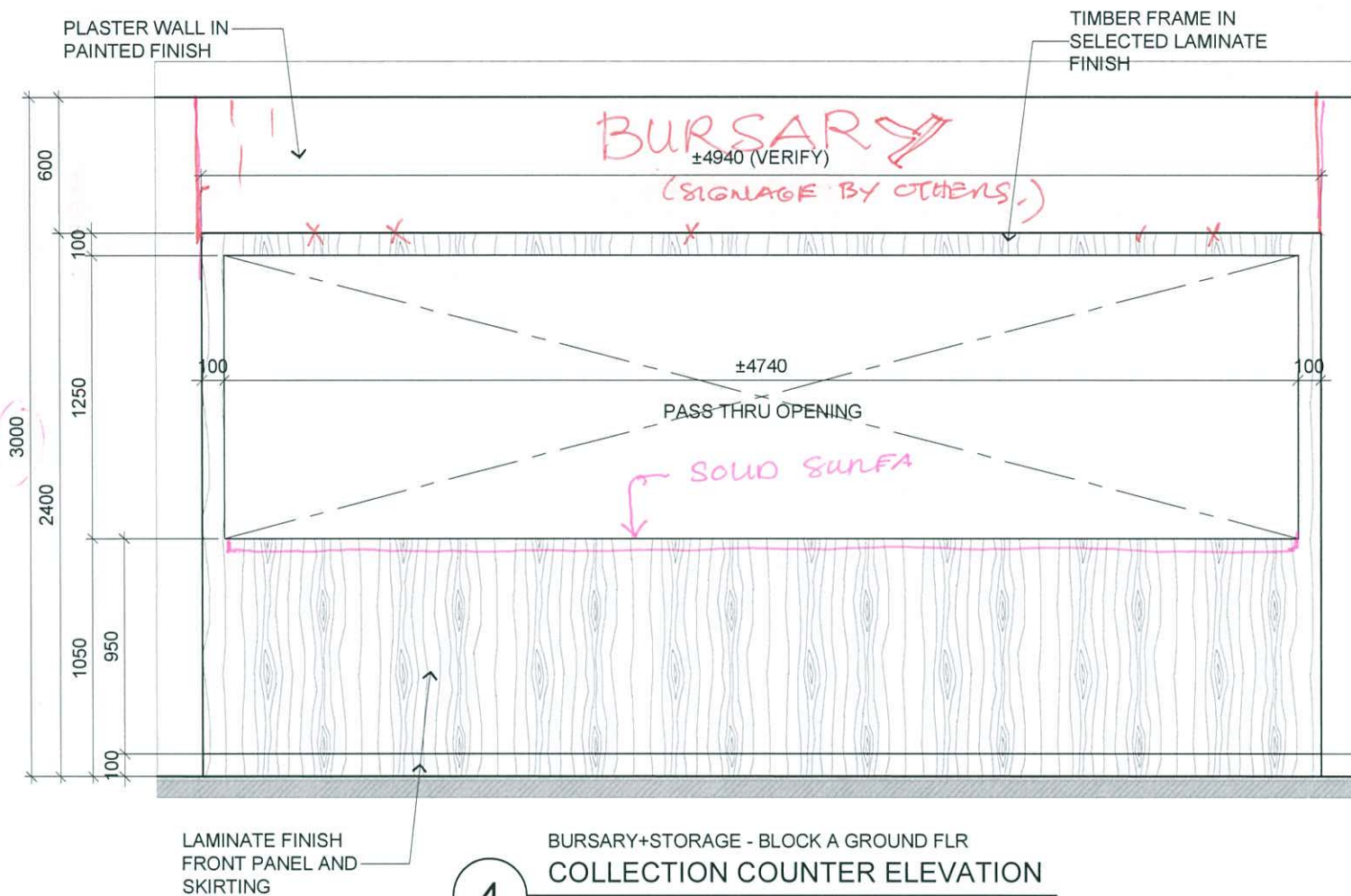
ARCHITECTURE GROUP-STUDIO A
CPG CONSULTANTS PTE LTD
1 GATEWAY DRIVE #25-01
WESTGATE TOWER, SINGAPORE 608531
TEL: 6357 4888 FAX: 6357 4188

©2014, CPG Consultants Pte Ltd reserves all rights to these drawings, designs and/or any other data contained herein. No part of the said drawings, designs and/or other data may be reproduced, modified, transmitted or used in any form or by any means for any purpose without the prior written consent of CPG Consultants Pte Ltd other than the sole purpose for which such drawings, designs and/or other data are provided to licensed users on such terms as CPG Consultants Pte Ltd may prescribe.

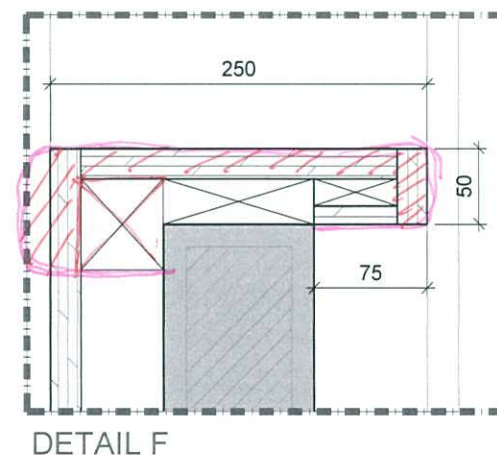
Job Title
INTERIOR DESIGN WORKS FOR PROPOSED KDU PENANG
@ BATU KAWAN, PENANG MALAYSIA
Drawing Title
COLLECTION COUNTER DETAIL @ BURSARY+STORAGE
BLOCK A GROUND FLOOR

Senior Vice President
TAN PHENG CHEE
Vice President
PATRICK TAN
Principal Architectural Associate
-
Architectural Associate
-
Principal Interior Designer
BETH SONCUYA

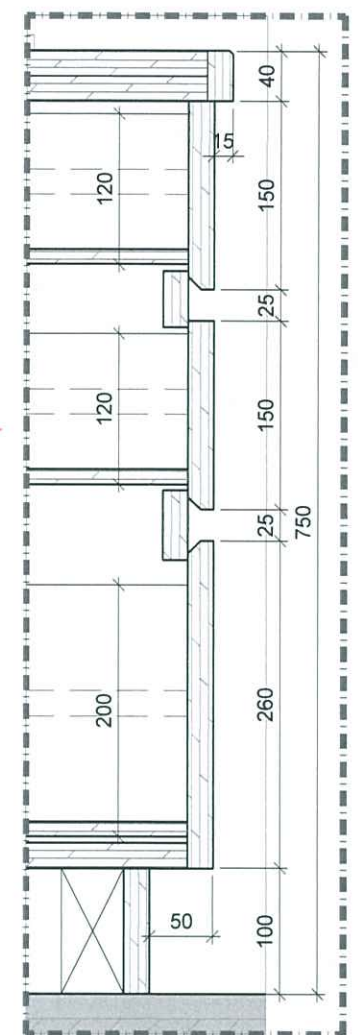
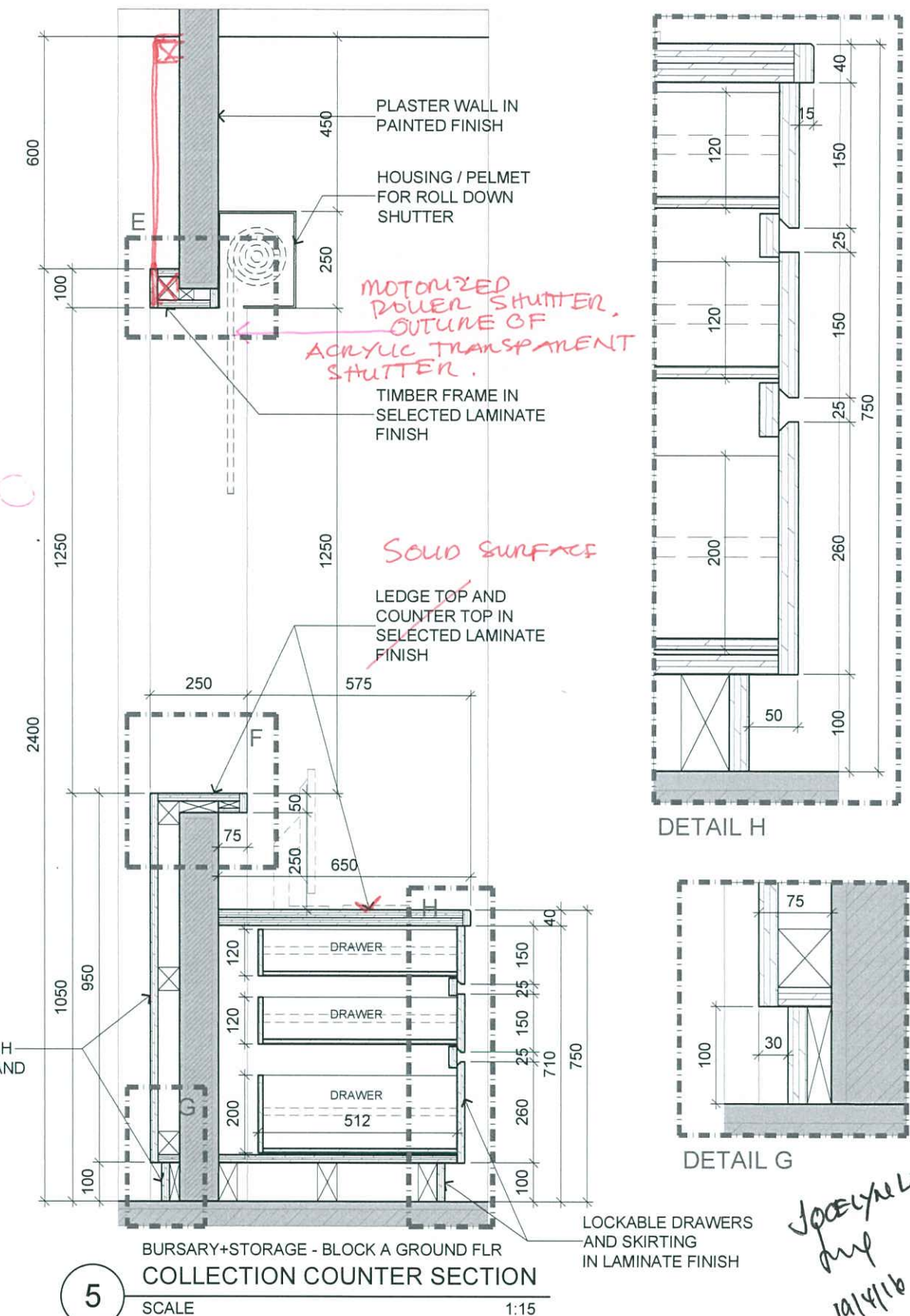
TENDER DRAWING					
Drawn By	TEAM	Date:-			
Checked By	BETH	Date:-			
Project Code :	Drawing No. :	REV.	Scale :		
P5679	ID-RC-A-401-04	-	AS SHOWN		
			CAD Ref.		



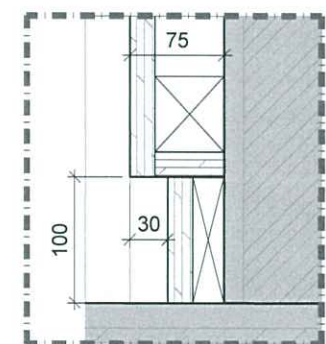
DETAIL E



DETAIL F



DETAIL H



DETAIL G

RC-02



ARCHITECTURE GROUP-STUDIO A
CPG CONSULTANTS PTE LTD
1 GATEWAY DRIVE #25-01
WESTGATE TOWER, SINGAPORE 608531
TEL: 6357 4888 FAX: 6357 4188

©2014, CPG Consultants Pte Ltd reserves all rights to these drawings, designs and/or any other data contained herein. No part of the said drawings, designs and/or other data may be reproduced, modified, transmitted or used in any form or by any means for any purpose without the prior written consent of CPG Consultants Pte Ltd other than the sole purpose for which such drawings, designs and/or other data are provided to licensed users on such terms as CPG Consultants Pte Ltd may prescribe.

Job Title
INTERIOR DESIGN WORKS FOR PROPOSED KDU PENANG
@ BATU KAWAN, PENANG MALAYSIA

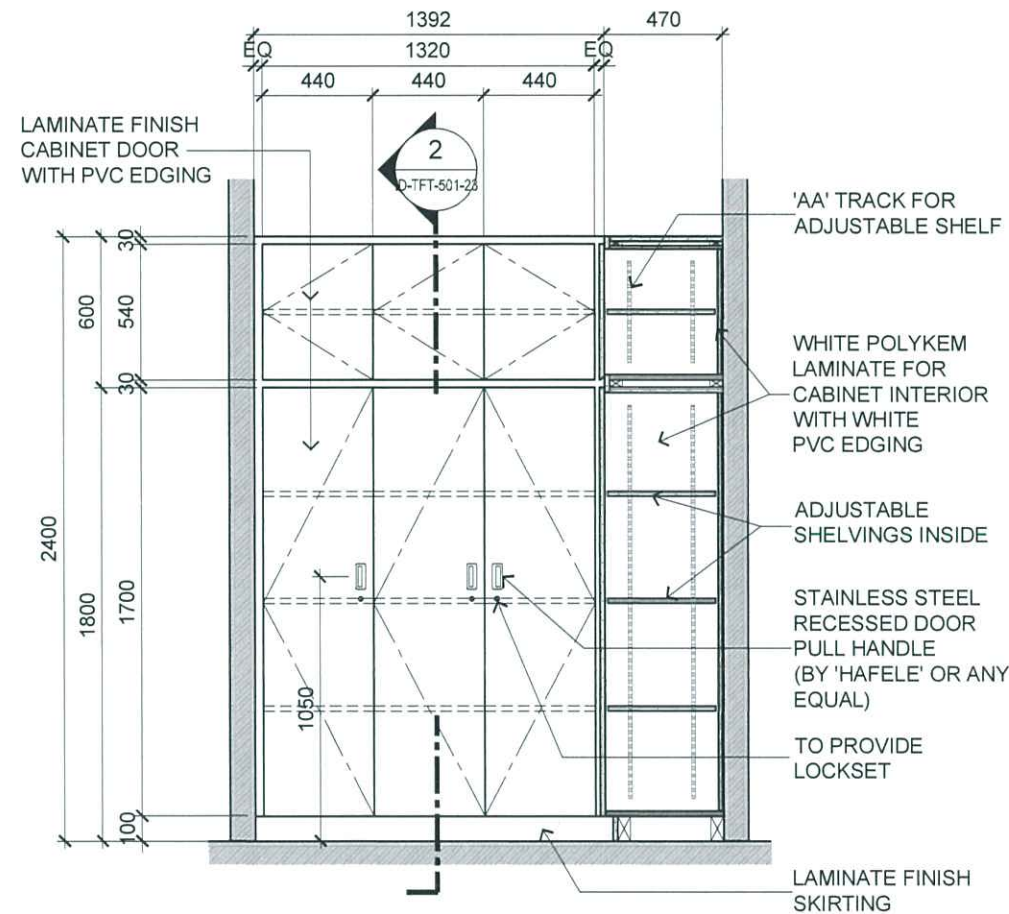
Drawing Title
COLLECTION COUNTER DETAIL @ BURSARY+STORAGE
BLOCK A GROUND FLOOR

Senior Vice President	TAN PHENG CHEE
Vice President	PATRICK TAN
Principal Architectural Associate	-
Architectural Associate	-
Principal Interior Designer	BETH SONCUYA

Drawn By	TEAM	Date:-
Checked By	BETH	Date:-
Project Code :	Drawing No. :	REV.
P5679	ID-RC-A-401-05	-
Scale : AS SHOWN		CAD Ref.

TENDER DRAWING

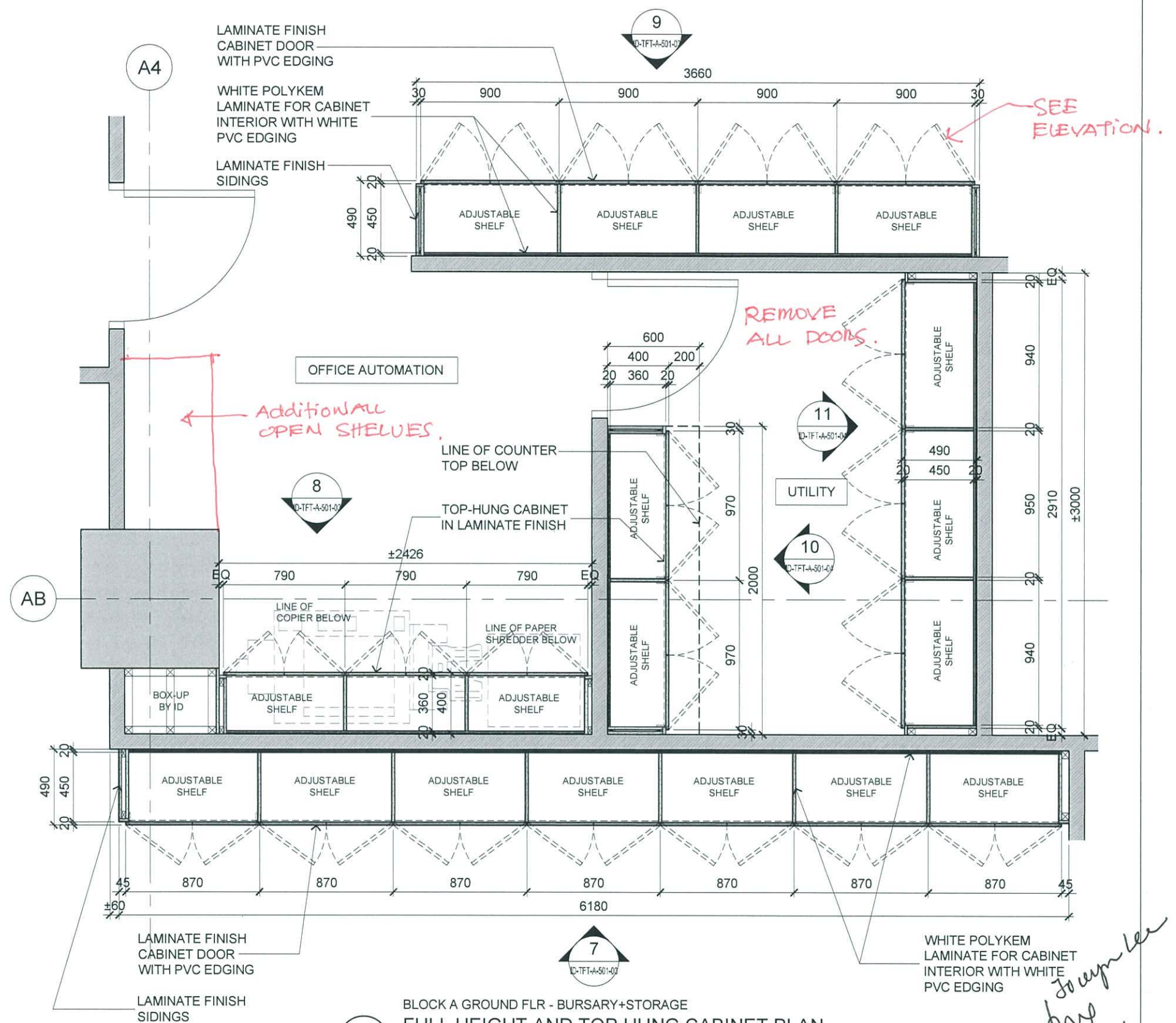
*Specified by
10/4/16*



BLOCK A GROUND FLR - STUDENT SERVICE DEPT.
FULL HEIGHT CABINET ELEVATION

5

SCALE 1:30



BLOCK A GROUND FLR - BURSARY+STORAGE
FULL HEIGHT AND TOP HUNG CABINET PLAN

6

SCALE 1:30

TENDER DRAWING



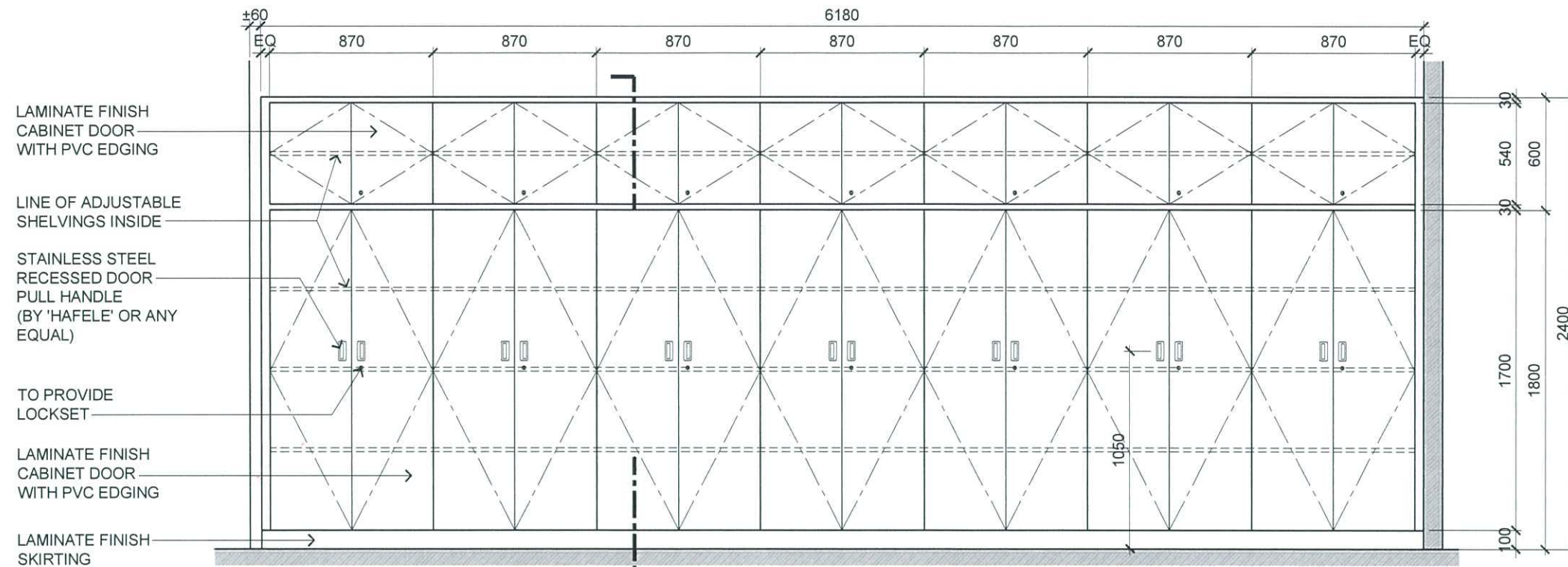
ARCHITECTURE GROUP-STUDIO A
CPG CONSULTANTS PTE LTD
1 GATEWAY DRIVE #25-01
WESTGATE TOWER, SINGAPORE 608531
TEL: 6357 4888 FAX: 6357 4188

©2014, CPG Consultants Pte Ltd reserves all rights to these drawings, designs and/or any other data contained herein. No part of the said drawings, designs and/or other data may be reproduced, modified, transmitted or used in any form or by any means for any purpose without the prior written consent of CPG Consultants Pte Ltd other than the sole purpose for which such drawings, designs and/or other data are provided to licensed users on such terms as CPG Consultants Pte Ltd may prescribe.

Job Title
PROPOSED KDU PENANG @ BATU KAWAN,
PENANG MALAYSIA
Drawing Title
FULL HEIGHT CABINET DETAILS
BLOCK A GROUND FLOOR

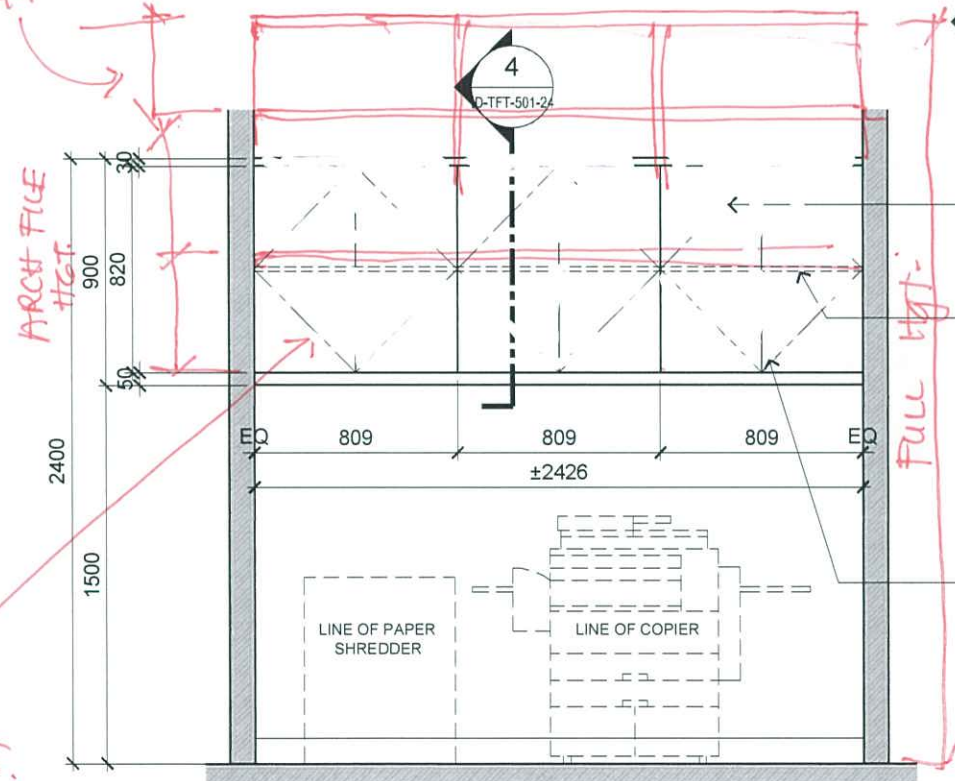
Senior Vice President	TAN PHENG CHEE
Vice President	PATRICK TAN
Principal Architectural Associate	-
Architectural Associate	-
Principal Interior Designer	BETH SONCUYA

Drawn By	TEAM	Date:-
Checked By	BETH	Date:-
Project Code :	P5679	
Drawing No. :	ID-TFT-A-501-02	
REV.	-	Scale : 1:30 CAD Ref.



BLOCK A GROUND FLR - MARKETING SALE AREA
FULL HEIGHT CABINET ELEVATION

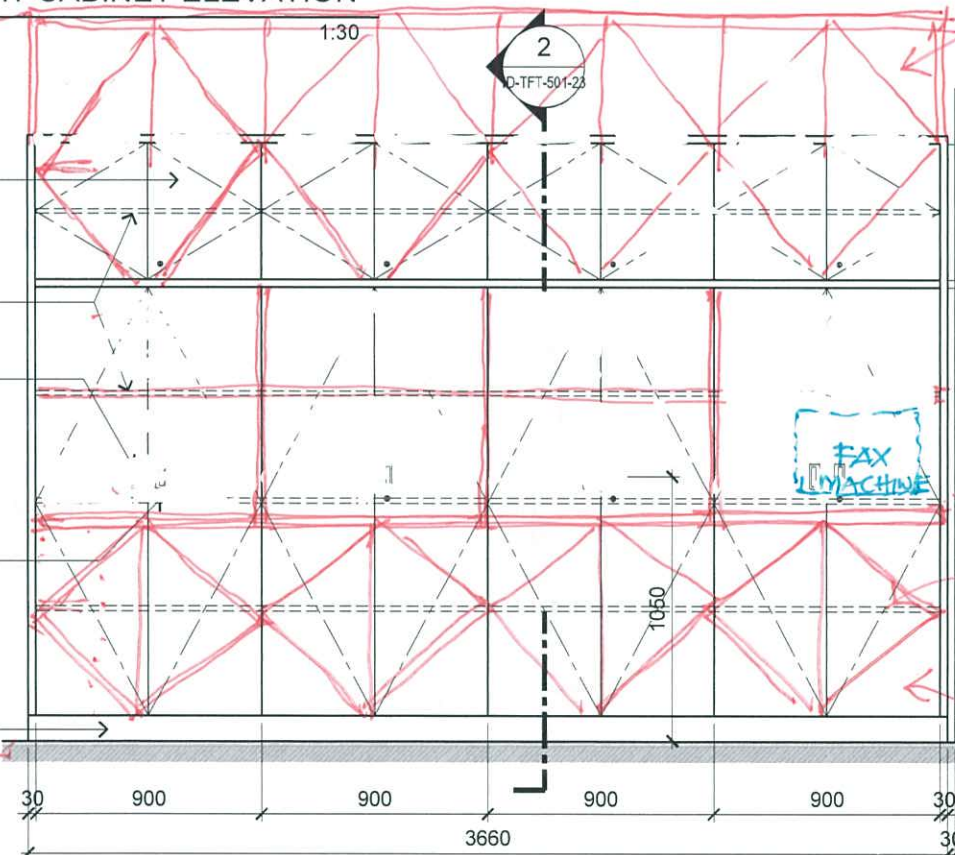
SCALE



BLOCK A GROUND FLR - BURSARY+STORAGE
TOP HUNG CABINET ELEVATION

SCALE

1:30



BLOCK A GROUND FLR - BURSARY+STORAGE
FULL HEIGHT CABINET ELEVATION

SCALE

1:30

TENDER DRAWING

Drawn By	TEAM	Date:-
Checked By	BETH	Date:-
Project Code :	Drawing No. :	REV.
P5679	ID-TFT-A-501-03	-
		Scale : 1:30
		CAD Ref.



ARCHITECTURE GROUP-STUDIO A
CPG CONSULTANTS PTE LTD
1 GATEWAY DRIVE #25-01
WESTGATE TOWER, SINGAPORE 608531
TEL: 6357 4888 FAX: 6357 4188

©2014, CPG Consultants Pte Ltd reserves all rights to these drawings, designs and/or any other data contained herein. No part of the said drawings, designs and/or other data may be reproduced, modified, transmitted or used in any form or by any means for any purpose without the prior written consent of CPG Consultants Pte Ltd other than the sole purpose for which such drawings, designs and/or other data are provided to licensed users on such terms as CPG Consultants Pte Ltd may prescribe.

Job Title
PROPOSED KDU PENANG @ BATU KAWAN,
PENANG MALAYSIA
Drawing Title
FULL HEIGHT CABINET DETAILS
BLOCK A GROUND FLOOR

Senior Vice President
TAN PHENG CHEE
Vice President
PATRICK TAN
Principal Architectural Associate
-
Architectural Associate
-
Principal Interior Designer
BETH SONCUYA

JOCELYN LEE
19/10/16

shelf at 850,
power point please locate at
least 150 from the top

NO LOCKSET.

Cabinet
Door.
with fix
shelf
fit for
ARCH FILE.
NO LOCK.

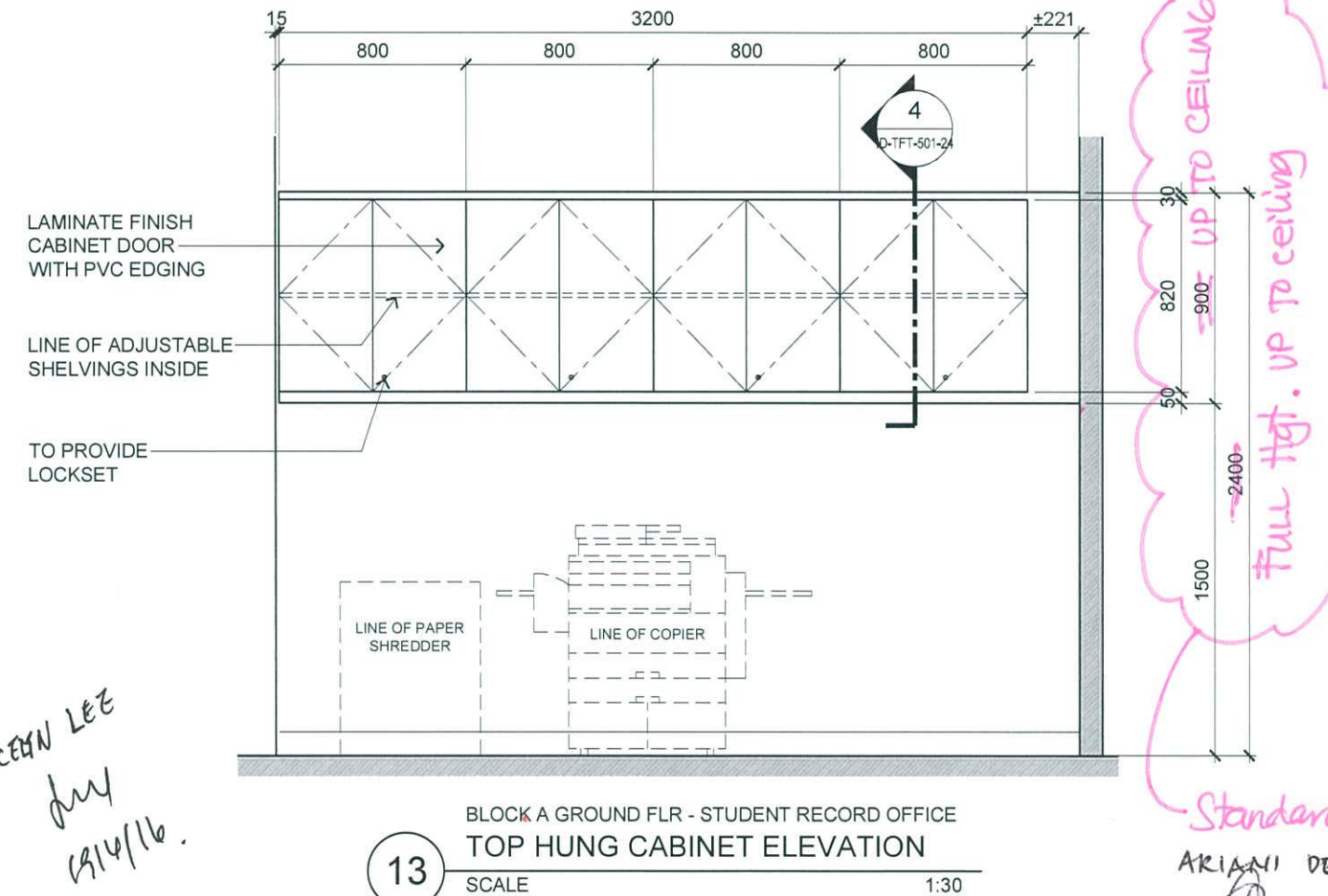
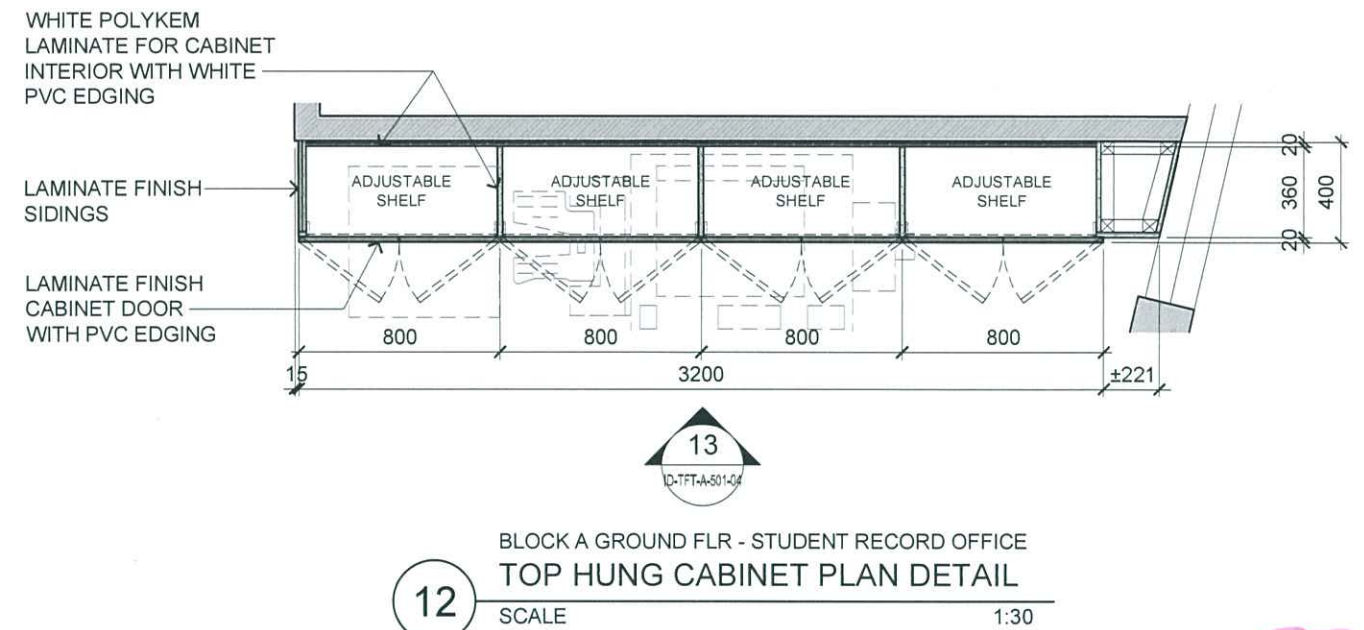
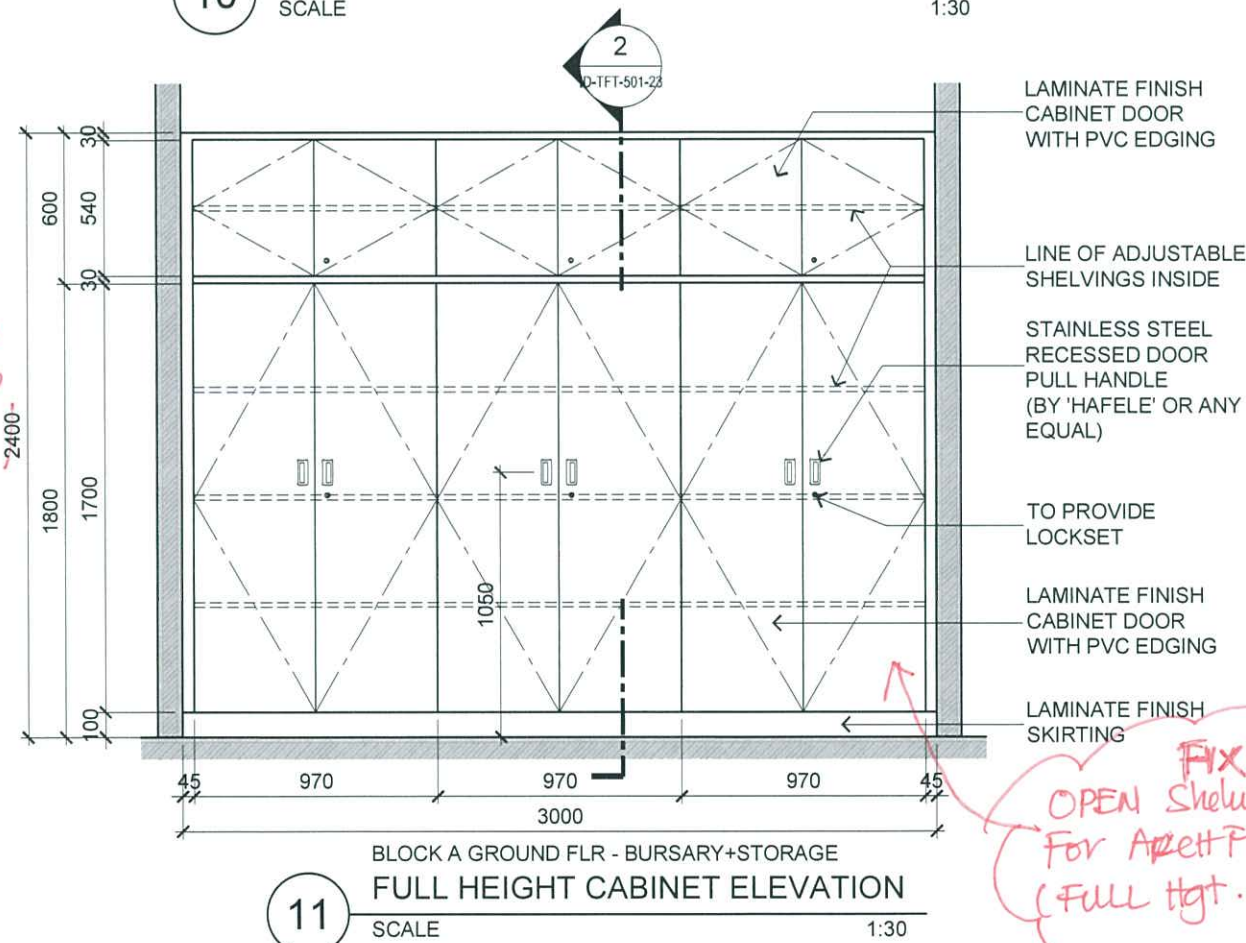
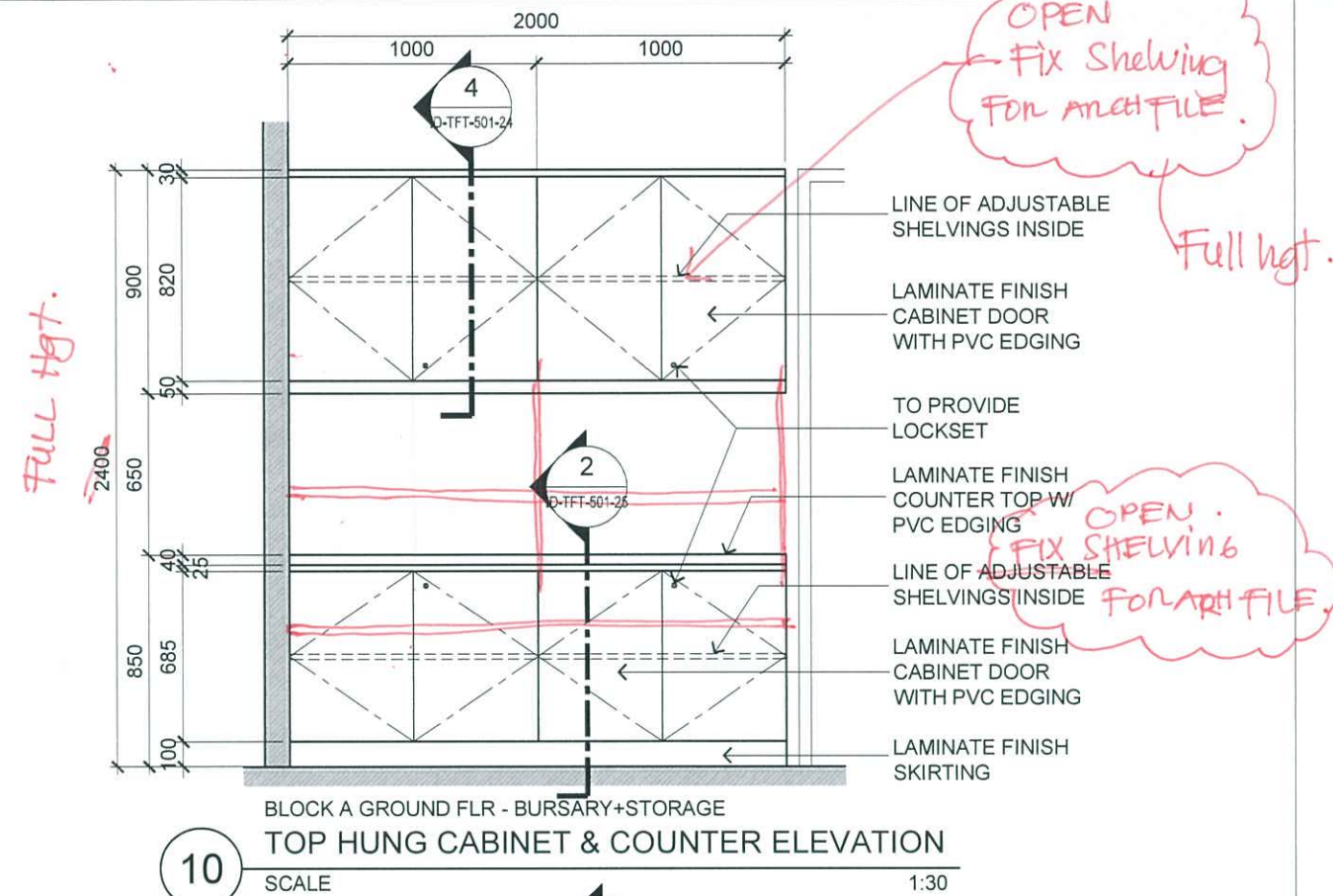
OPEN
SHELF FOR
ARCH FILE

Full Height.

Full Hgt.

Balance
Till Ctg. Hgt.

OPEN
FIX
SHELVES.



JOCEAN LEE
JULY
19/4/16.

Standardise.
ARIANI DEWI
19/4/2016



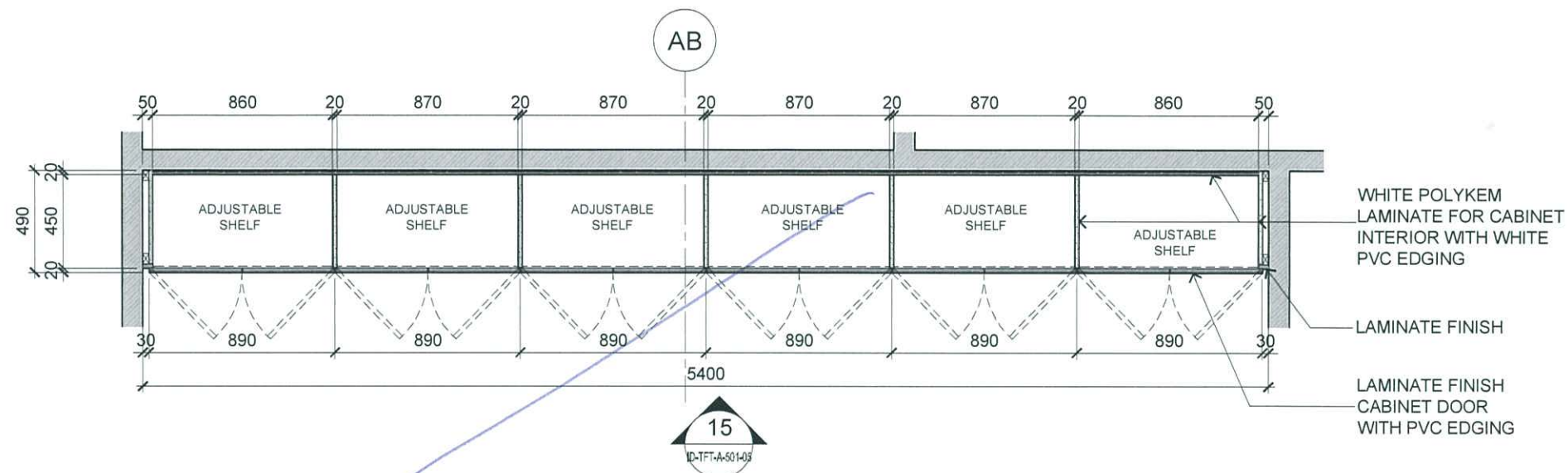
ARCHITECTURE GROUP-STUDIO A
CPG CONSULTANTS PTE LTD
1 GATEWAY DRIVE #25-01
WESTGATE TOWER, SINGAPORE 608531
TEL: 6357 4888 FAX: 6357 4188

©2014, CPG Consultants Pte Ltd reserves all rights to these drawings, designs and/or any other data contained herein. No part of the said drawings, designs and/or other data may be reproduced, modified, transmitted or used in any form or by any means for any purpose without the prior written consent of CPG Consultants Pte Ltd other than the sole purpose for which such drawings, designs and/or other data are provided to licensed users on such terms as CPG Consultants Pte Ltd may prescribe.

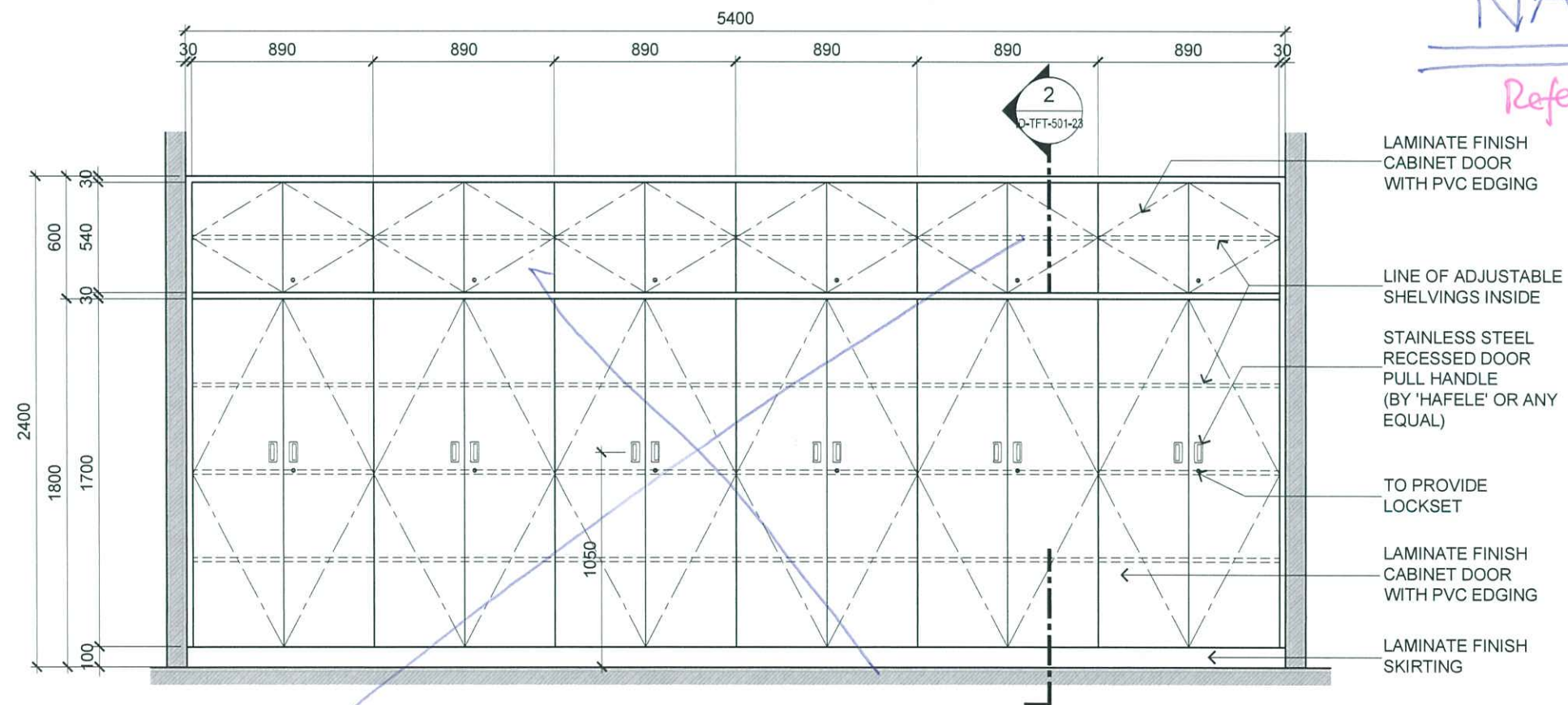
Job Title
PROPOSED KDU PENANG @ BATU KAWAN,
PENANG MALAYSIA
Drawing Title
FULL HEIGHT CABINET DETAILS
BLOCK A GROUND FLOOR

Senior Vice President	TAN PHENG CHEE
Vice President	PATRICK TAN
Principal Architectural Associate	-
Architectural Associate	-
Principal Interior Designer	BETH SONCUYA

TENDER DRAWING			
Drawn By	TEAM	Date:-	
Checked By	BETH	Date:-	
Project Code :	Drawing No. :	REV.	Scale : 1:30
P5679	ID-TFT-A-501-04	-	CAD Ref.



14 BLOCK A GROUND FLR - STUDENT RECORD OFFICE
FULL HEIGHT CABINET PLAN DETAIL
SCALE 1:30



15 BLOCK A GROUND FLR - STUDENT RECORD OFFICE
FULL HEIGHT CABINET ELEVATION
SCALE 1:30

NA

Refer to Blow-up PLAN.



ARCHITECTURE GROUP-STUDIO A
CPG CONSULTANTS PTE LTD
1 GATEWAY DRIVE #25-01
WESTGATE TOWER, SINGAPORE 608531
TEL: 6357 4888 FAX: 6357 4188

©2014, CPG Consultants Pte Ltd reserves all rights to these drawings, designs and/or any other data contained herein. No part of the said drawings, designs and/or other data may be reproduced, modified, transmitted or used in any form or by any means for any purpose without the prior written consent of CPG Consultants Pte Ltd other than the sole purpose for which such drawings, designs and/or other data are provided to licensed users on such terms as CPG Consultants Pte Ltd may prescribe.

Job Title
PROPOSED KDU PENANG @ BATU KAWAN,
PENANG MALAYSIA

Drawing Title
FULL HEIGHT CABINET DETAILS
BLOCK A GROUND FLOOR

Senior Vice President	TAN PHENG CHEE
Vice President	PATRICK TAN
Principal Architectural Associate	-
Architectural Associate	-
Principal Interior Designer	BETH SONCUYA

TENDER DRAWING					
Drawn By	TEAM		Date:-		
Checked By	BETH		Date:-		
Project Code :	Drawing No. :	REV.	Scale : 1:30		
P5679	ID-TFT-A-501-05	-	CAD Ref.		