

ARCHITECTURE GROUP-STUDIO A
CPG CONSULTANTS PTE LTD
1 GATEWAY DRIVE #25-01
WESTGATE TOWER, SINGAPORE 608531
TEL: 6357 4888 FAX: 6357 4188

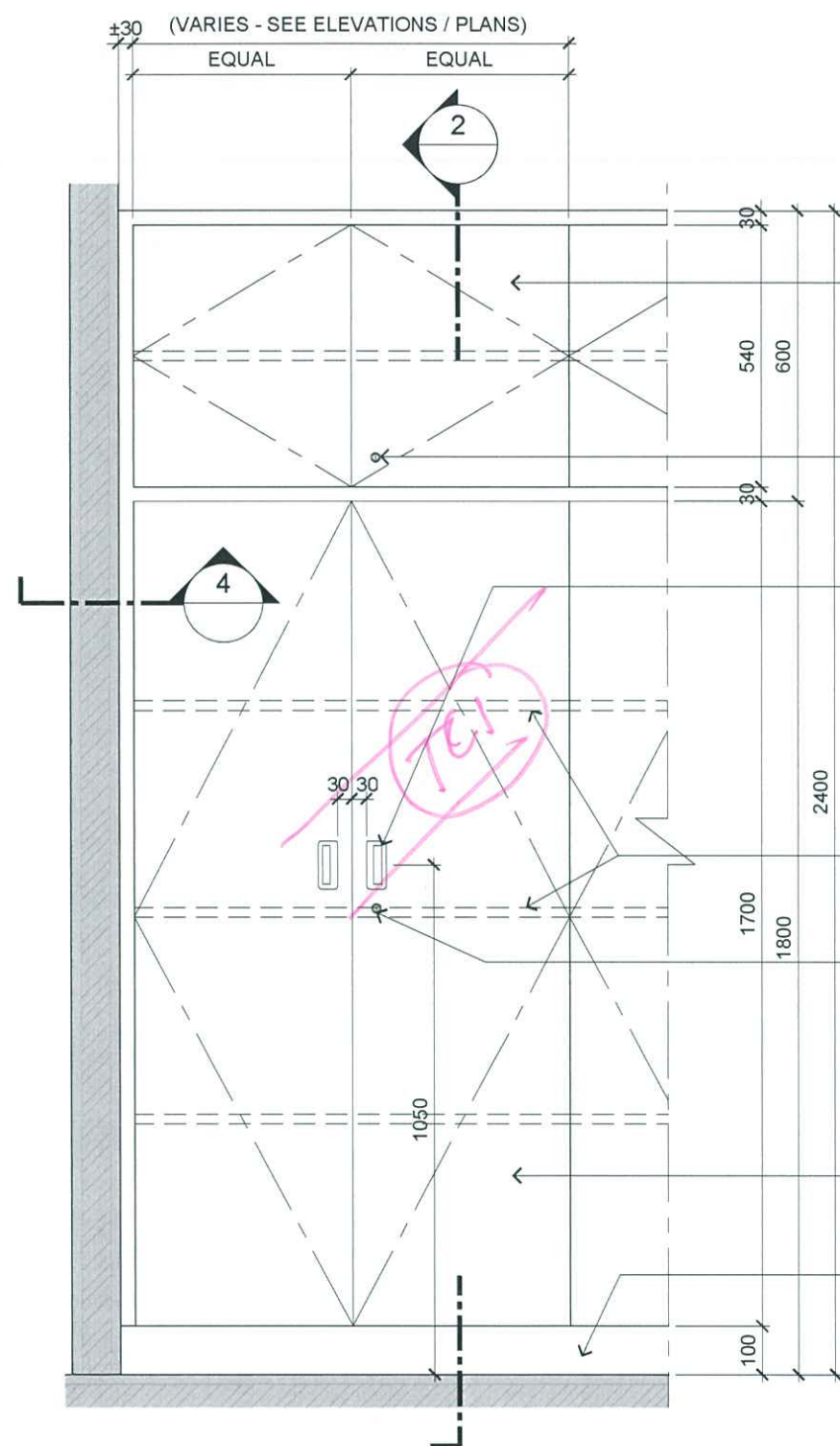
©2014, CPG Consultants Pte Ltd reserves all rights to these drawings, designs and/or any other data contained herein. No part of the said drawings, designs and/or other data may be reproduced, modified, transmitted or used in any form or by any means for any purpose without the prior written consent of CPG Consultants Pte Ltd other than the sole purpose for which such drawings, designs and/or other data are provided to licensed users on such terms as CPG Consultants Pte Ltd may prescribe.

Job Title
PROPOSED KDU PENANG @ BATU KAWAN,
PENANG MALAYSIA

Drawing Title
FULL HEIGHT CABINET DETAILS
BLOCK B GROUND FLOOR

Senior Vice President	TAN PHENG CHEE
Vice President	PATRICK TAN
Principal Architectural Associate	-
Architectural Associate	-
Principal Interior Designer	BETH SONCUYA

TENDER DRAWING					
Drawn By	TEAM		Date:-		
Checked By	BETH		Date:-		
Project Code :	Drawing No. :	REV.	Scale : 1:30		
P5679	ID-TFT-B-502-01	-	CAD Ref.		



1 TYPICAL FULL HEIGHT CABINET BLOW UP ELEVATION DETAILS

SCALE 1:15

LAMINATE FINISH CABINET DOOR WITH PVC EDGING

TO PROVIDE LOCKSET

STAINLESS STEEL RECESSED DOOR PULL HANDLE (BY 'HAFELE' OR ANY EQUAL)

'AA' TRACK FOR ADJUSTABLE SHELF

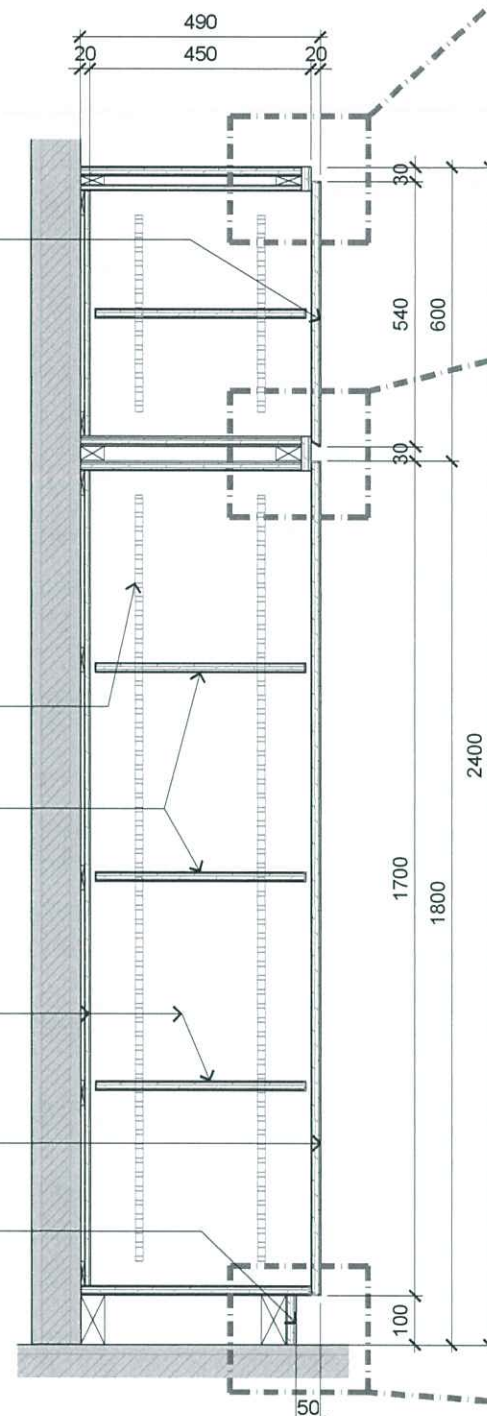
LINE OF ADJUSTABLE SHELVINGS INSIDE

TO PROVIDE LOCKSET

WHITE POLYKEM LAMINATE FOR CABINET INTERIOR WITH WHITE PVC EDGING

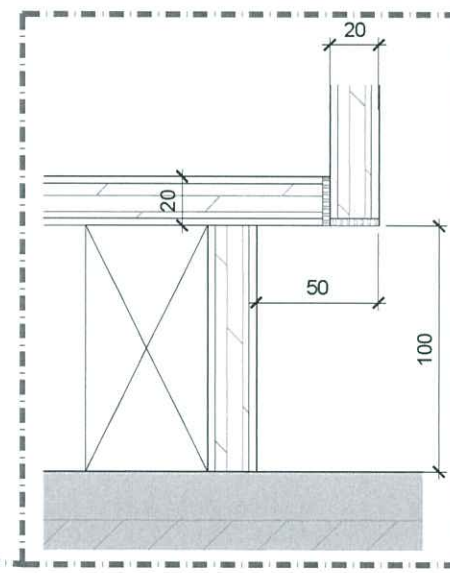
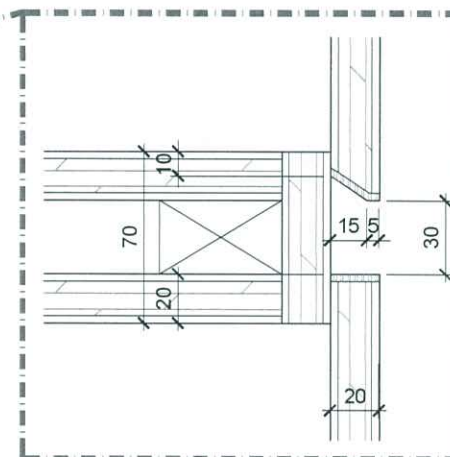
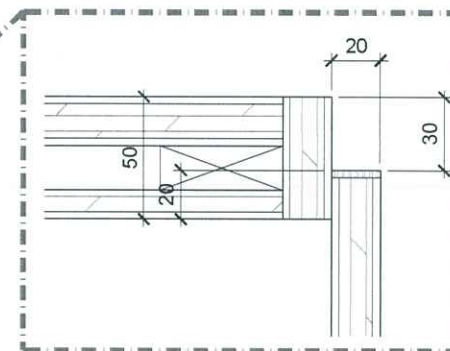
LAMINATE FINISH CABINET DOOR WITH PVC EDGING

LAMINATE FINISH SKIRTING



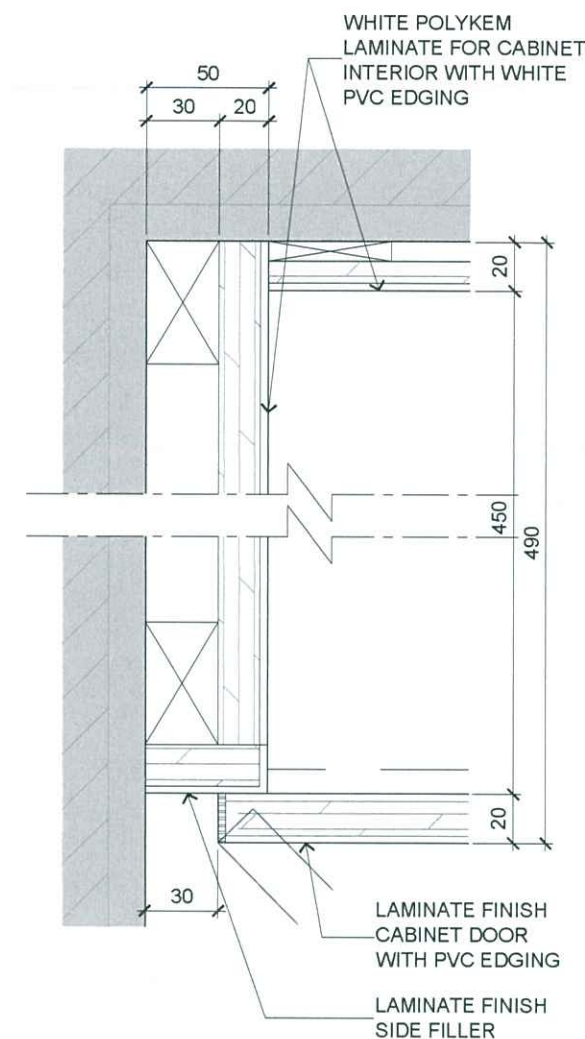
2 TYPICAL FULL HEIGHT CABINET BLOW UP SECTION DETAILS

SCALE 1:15



3 TYPICAL FULL HEIGHT CABINET SPOT DETAILS

SCALE 1:3



4 TYPICAL FULL HEIGHT CABINET SPOT DETAILS

SCALE 1:3



ARCHITECTURE GROUP-STUDIO A
CPG CONSULTANTS PTE LTD
1 GATEWAY DRIVE #25-01
WESTGATE TOWER, SINGAPORE 608531
TEL: 6357 4888 FAX: 6357 4188

©2014, CPG Consultants Pte Ltd reserves all rights to these drawings, designs and/or any other data contained herein. No part of the said drawings, designs and/or other data may be reproduced, modified, transmitted or used in any form or by any means for any purpose without the prior written consent of CPG Consultants Pte Ltd other than the sole purpose for which such drawings, designs and/or other data are provided to licensed users on such terms as CPG Consultants Pte Ltd may prescribe.

Job Title

PROPOSED KDU PENANG @ BATU KAWAN,
PENANG MALAYSIA

Drawing Title

FULL HEIGHT CABINET TYPICAL DETAILS
BLOCK B GROUND FLOOR

Senior Vice President

TAN PHENG CHEE

Vice President

PATRICK TAN

Principal Architectural Associate

-

Architectural Associate

-

Principal Interior Designer

BETH SONCUYA

TENDER DRAWING

Drawn By

TEAM

Date:-

Checked By

BETH

Date:-

Project Code :

Drawing No. :

REV.

Scale : AS SHOWN

P5679

ID-TFT-B-502-02

-

CAD Ref.