

Jimmy Tan
19/4/2016



ARCHITECTURE GROUP-STUDIO A
CPG CONSULTANTS PTE LTD
1 GATEWAY DRIVE #25-01
WESTGATE TOWER, SINGAPORE 608531
TEL: 6357 4888 FAX: 6357 4188

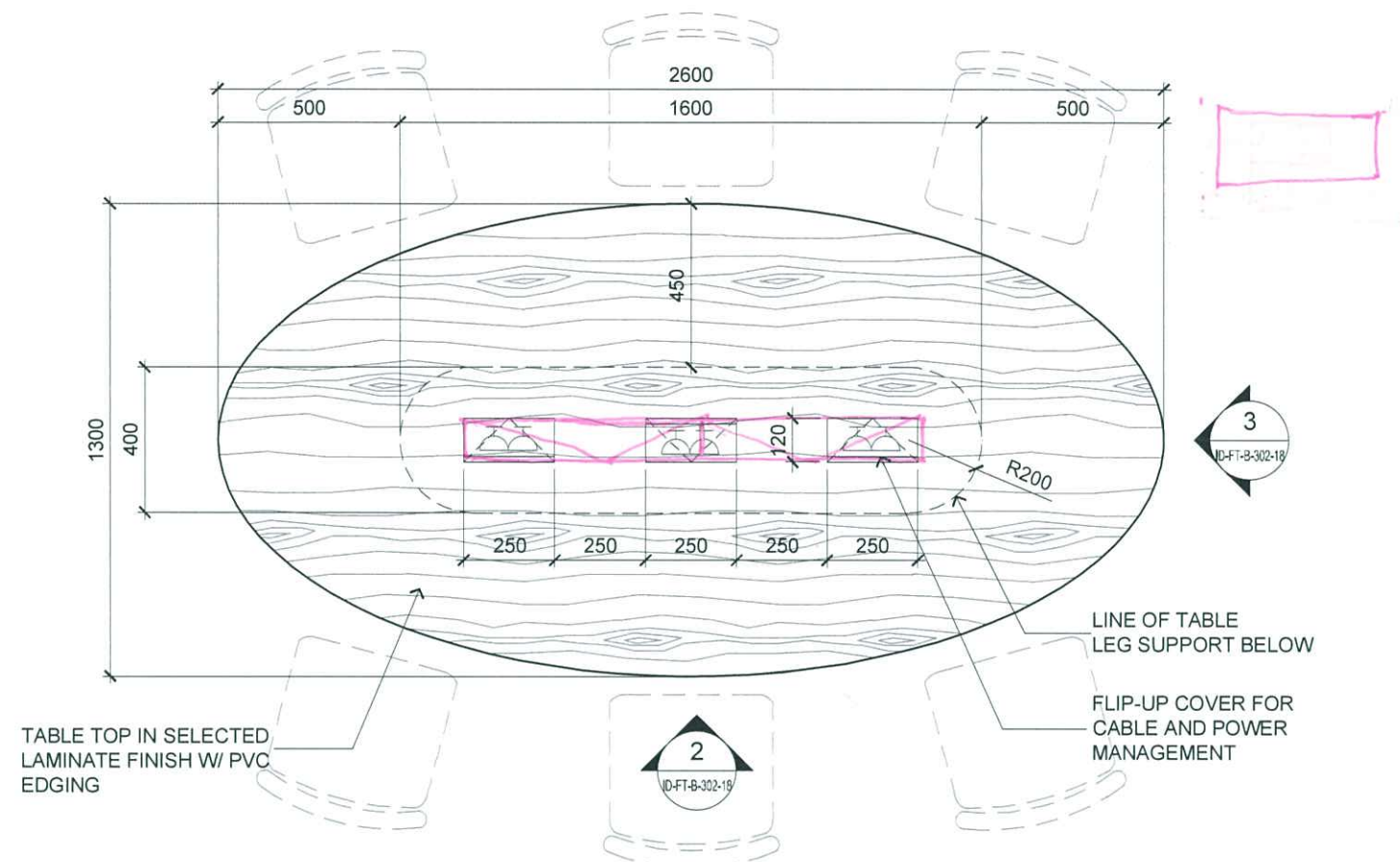
©2014, CPG Consultants Pte Ltd reserves all rights to these drawings, designs and/or any other data contained herein. No part of the said drawings, designs and/or other data may be reproduced, modified, transmitted or used in any form or by any means for any purpose without the prior written consent of CPG Consultants Pte Ltd other than the sole purpose for which such drawings, designs and/or other data are provided to licensed users on such terms as CPG Consultants Pte Ltd may prescribe.

Job Title
INTERIOR DESIGN WORKS FOR PROPOSED KDU PENANG
@ BATU KAWAN, PENANG MALAYSIA

Drawing Title
TYPICAL SMART CLASSROOM TYPE 1 BLOW-UP PLAN
BLOCK B 2ND TO 4TH FLOOR

Senior Vice President	TAN PHENG CHEE
Vice President	PATRICK TAN
Principal Architectural Associate	-
Architectural Associate	-
Principal Interior Designer	BETH SONCUYA

Drawn By	TEAM	Date:-
Checked By	BETH	Date:-
Project Code :	Drawing No. :	REV. Scale : 1:50
P5679	ID-FT-B-302-17	- CAD Ref.

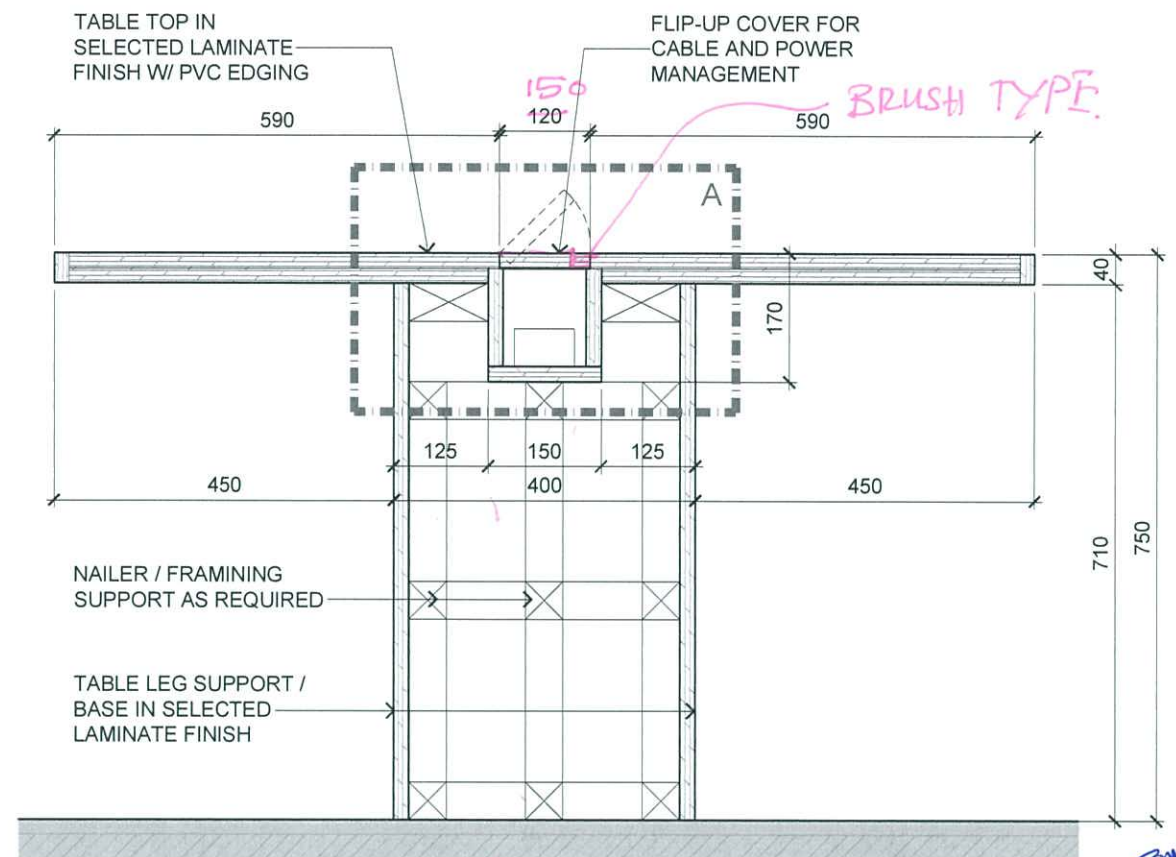


BLOCK B 2ND TO 4TH FLOOR
SMART CLASSROOM TYPE 1 TABLE DETAILS

1

SCALE

1:20

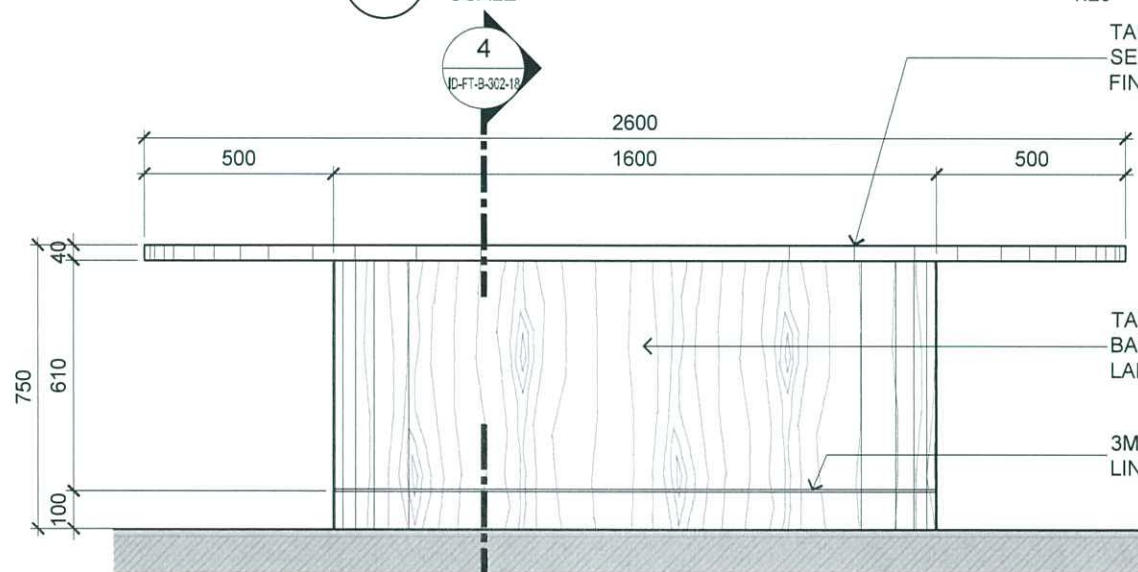


BLOCK B 2ND TO 4TH FLOOR
SMART CLASSROOM TYPE 1 TABLE DETAILS

4

SCALE

1:20

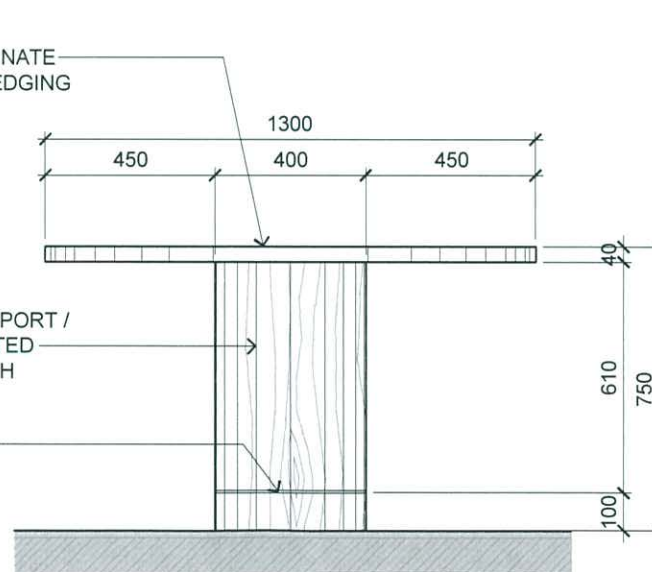


BLOCK B 2ND TO 4TH FLOOR
SMART CLASSROOM TYPE 1 TABLE DETAILS

2

SCALE

1:20

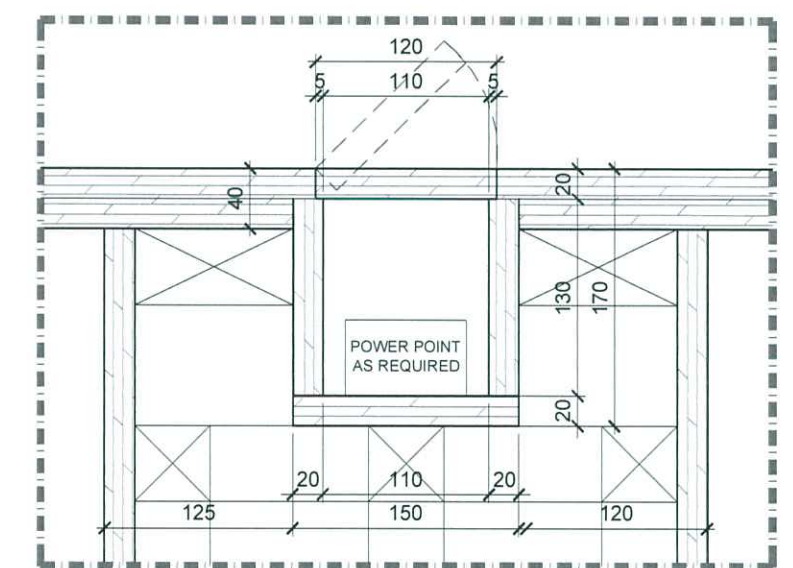


BLOCK B 2ND TO 4TH FLOOR
SMART CLASSROOM TYPE 1 TABLE DETAILS

3

SCALE

1:20



DETAIL A

Jimmy Tan
19/4/2016



ARCHITECTURE GROUP-STUDIO A
CPG CONSULTANTS PTE LTD
1 GATEWAY DRIVE #25-01
WESTGATE TOWER, SINGAPORE 608531
TEL: 6357 4888 FAX: 6357 4188

©2014, CPG Consultants Pte Ltd reserves all rights to these drawings, designs and/or any other data contained herein. No part of the said drawings, designs and/or other data may be reproduced, modified, transmitted or used in any form or by any means for any purpose without the prior written consent of CPG Consultants Pte Ltd other than the sole purpose for which such drawings, designs and/or other data are provided to licensed users on such terms as CPG Consultants Pte Ltd may prescribe.

Job Title

INTERIOR DESIGN WORKS FOR PROPOSED KDU PENANG
@ BATU KAWAN, PENANG MALAYSIA

Drawing Title

TYPICAL SMART CLASSROOM TYPE 1 TABLE DETAILS
BLOCK B 2ND TO 4TH FLOOR

Senior Vice President

TAN PHENG CHEE

Vice President

PATRICK TAN

Principal Architectural Associate

-

Architectural Associate

-

Principal Interior Designer

BETH SONCUYA

TENDER DRAWING

Drawn By

TEAM

Date:-

Checked By

BETH

Date:-

Project Code :

Drawing No. :

REV.

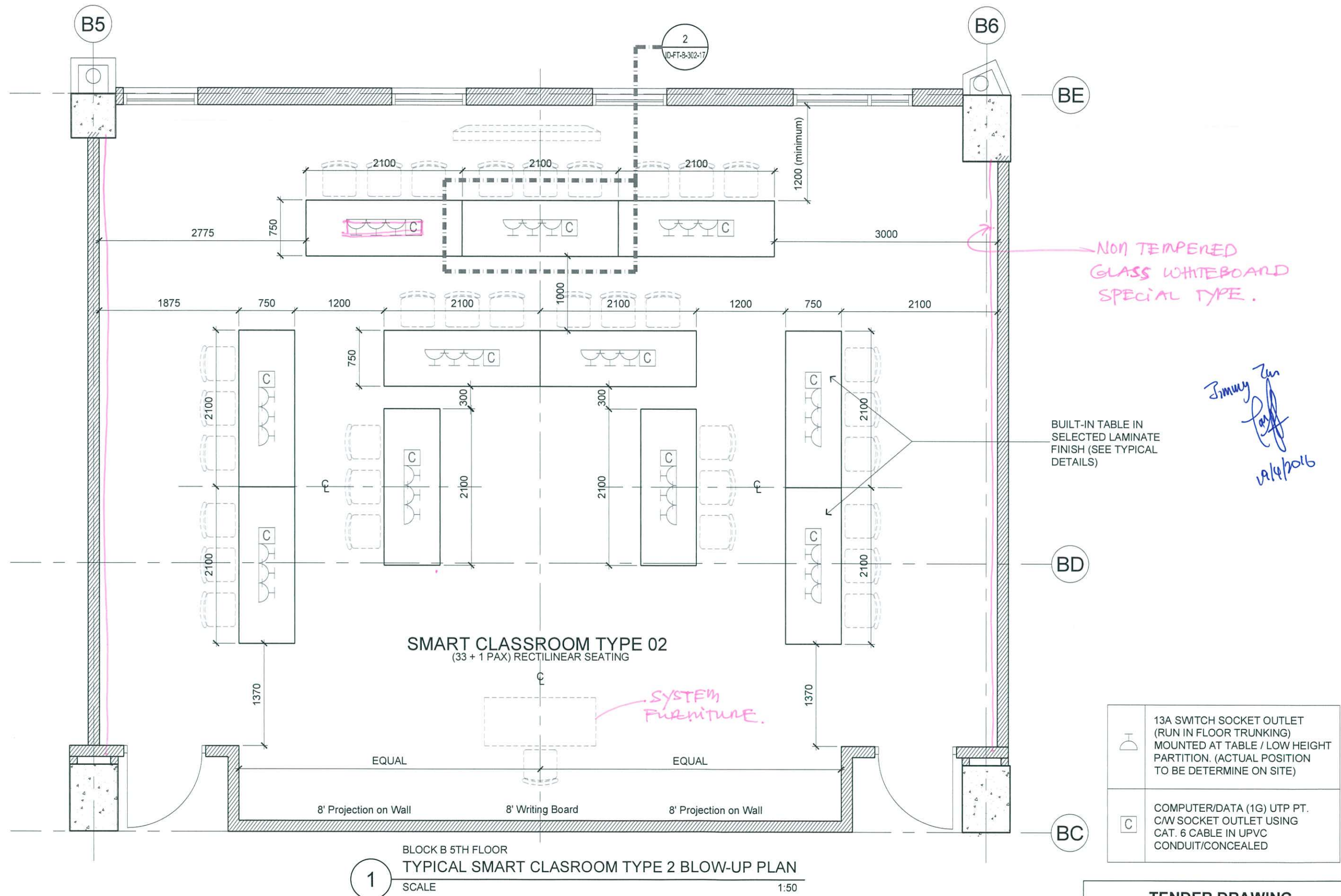
Scale : AS SHOWN

P5679

ID-FT-B-302-18

-

CAD Ref.



Jimmy Tan
19/4/2016



ARCHITECTURE GROUP-STUDIO A
CPG CONSULTANTS PTE LTD
1 GATEWAY DRIVE #25-01
WESTGATE TOWER, SINGAPORE 608531
TEL: 6357 4888 FAX: 6357 4188

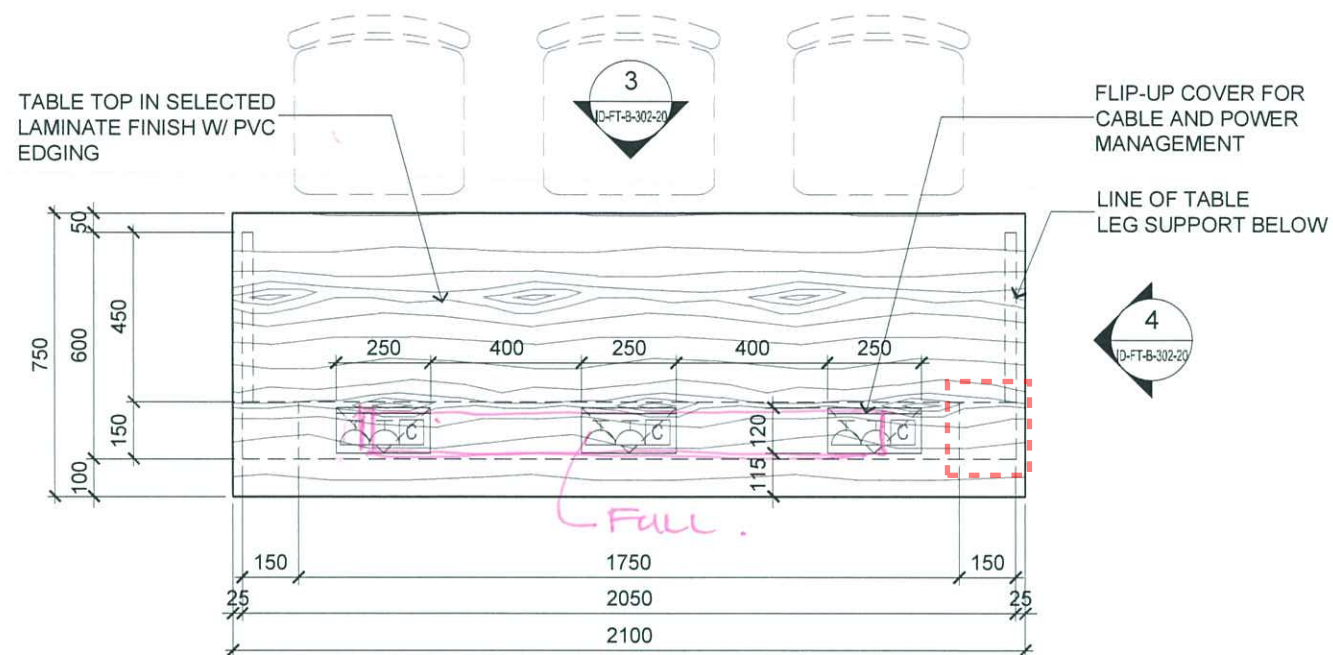
©2014, CPG Consultants Pte Ltd reserves all rights to these drawings, designs and/or any other data contained herein. No part of the said drawings, designs and/or other data may be reproduced, modified, transmitted or used in any form or by any means for any purpose without the prior written consent of CPG Consultants Pte Ltd other than the sole purpose for which such drawings, designs and/or other data are provided to licensed users on such terms as CPG Consultants Pte Ltd may prescribe.

Job Title
INTERIOR DESIGN WORKS FOR PROPOSED KDU PENANG @ BATU KAWAN, PENANG MALAYSIA

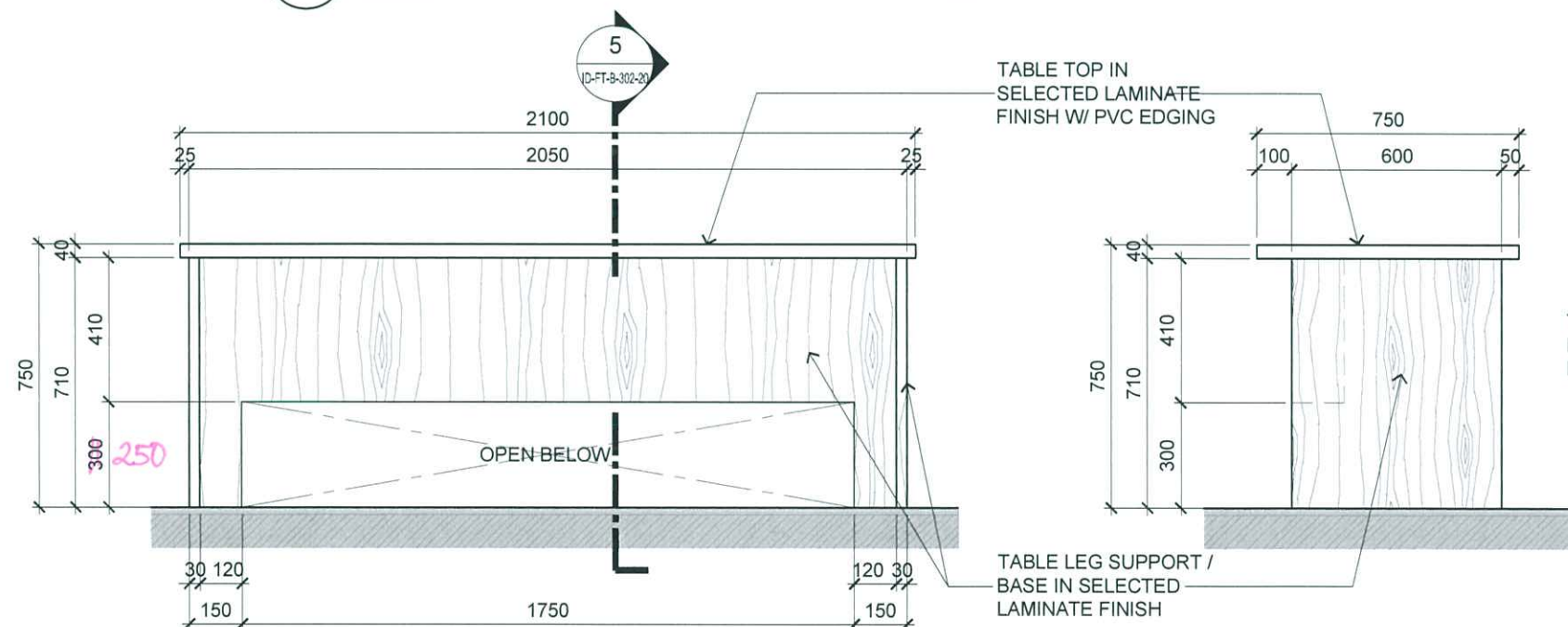
Drawing Title
TYPICAL SMART CLASSROOM TYPE 2 BLOW-UP PLAN
BLOCK B 5TH FLOOR

Senior Vice President	TAN PHENG CHEE
Vice President	PATRICK TAN
Principal Architectural Associate	-
Architectural Associate	-
Principal Interior Designer	BETH SONCUYA

TENDER DRAWING					
Drawn By	TEAM		Date:-		
Checked By	BETH		Date:-		
Project Code :	Drawing No. :	REV.	Scale : 1:50		
P5679	ID-FT-B-302-19	-	CAD Ref.		

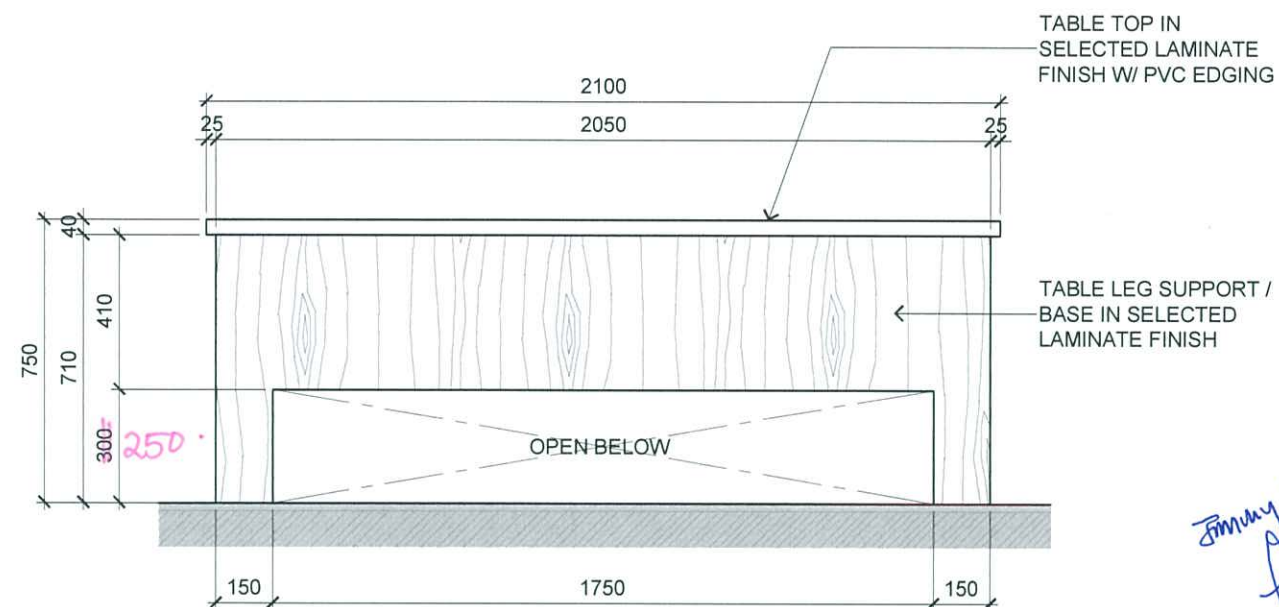


1 BLOCK B 5TH FLOOR
SMART CLASSROOM TYPE 2 TABLE DETAILS
SCALE 1:20

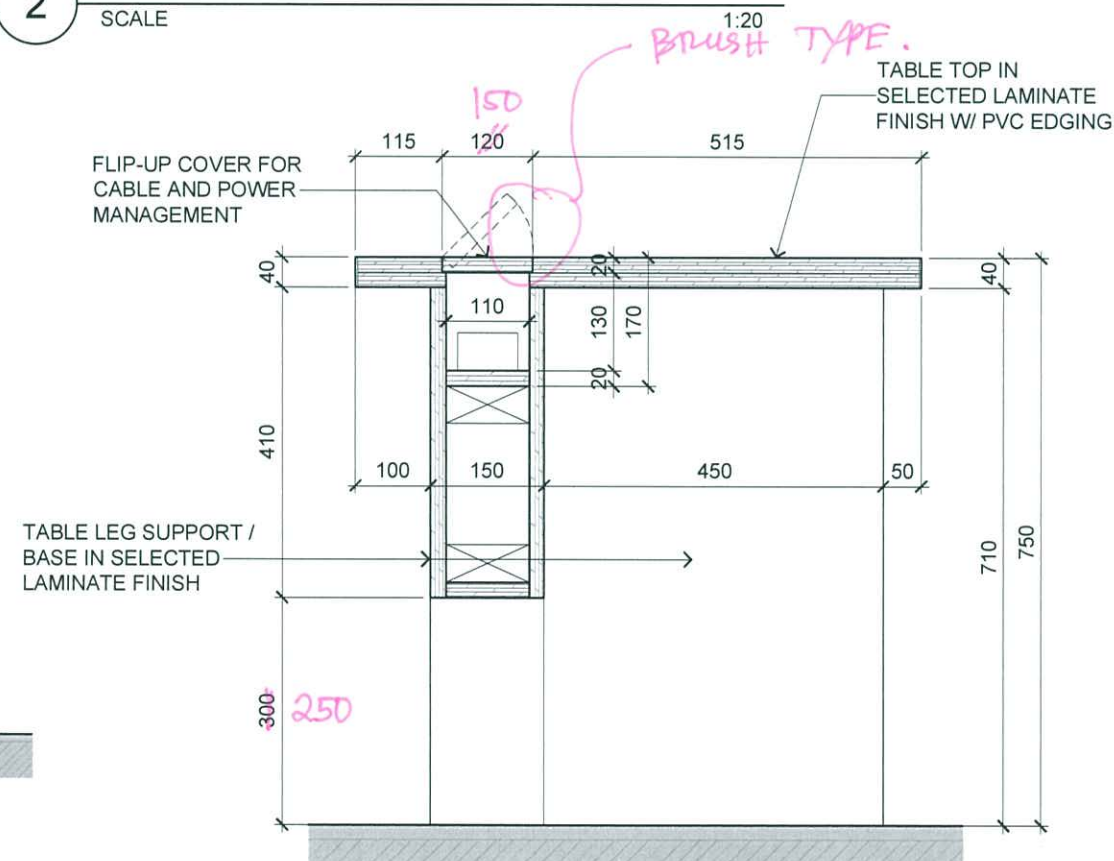


3 BLOCK B 5TH FLOOR
SMART CLASSROOM TYPE 2 TABLE DETAILS
SCALE 1:20

4 BLOCK B 5TH FLOOR
SMART CLASSROOM TYPE 2 TABLE DETAILS
SCALE 1:20



2 BLOCK B 5TH FLOOR
SMART CLASSROOM TYPE 2 TABLE DETAILS
SCALE 1:20



5 BLOCK B 5TH FLOOR
SMART CLASSROOM TYPE 2 TABLE DETAILS
SCALE 1:20

Jimmy Tan
19/9/2012



ARCHITECTURE GROUP-STUDIO A
CPG CONSULTANTS PTE LTD
1 GATEWAY DRIVE #25-01
WESTGATE TOWER, SINGAPORE 608531
TEL: 6357 4888 FAX: 6357 4188

©2014, CPG Consultants Pte Ltd reserves all rights to these drawings, designs and/or any other data contained herein. No part of the said drawings, designs and/or other data may be reproduced, modified, transmitted or used in any form or by any means for any purpose without the prior written consent of CPG Consultants Pte Ltd other than the sole purpose for which such drawings, designs and/or other data are provided to licensed users on such terms as CPG Consultants Pte Ltd may prescribe.

Job Title
INTERIOR DESIGN WORKS FOR PROPOSED KDU PENANG
@ BATU KAWAN, PENANG MALAYSIA

Drawing Title
TYPICAL SMART CLASSROOM TYPE 2 TABLE DETAILS
BLOCK B 5TH FLOOR

Senior Vice President	TAN PHENG CHEE
Vice President	PATRICK TAN
Principal Architectural Associate	-
Architectural Associate	-
Principal Interior Designer	BETH SONCUYA

TENDER DRAWING			
Drawn By	TEAM	Date:-	
Checked By	BETH	Date:-	
Project Code :	Drawing No. :	REV. :	Scale : AS SHOWN
P5679	ID-FT-B-302-20	-	CAD Ref.