

Handwritten note:
 (Ms Lim)
 5/5/16



ARCHITECTURE GROUP-STUDIO A
CPG CONSULTANTS PTE LTD
 1 GATEWAY DRIVE #25-01
 WESTGATE TOWER, SINGAPORE 608531
 TEL: 6357 4888 FAX: 6357 4188

©2014, CPG Consultants Pte Ltd reserves all rights to these drawings, designs and/or any other data contained herein. No part of the said drawings, designs and/or other data may be reproduced, modified, transmitted or used in any form or by any means for any purpose without the prior written consent of CPG Consultants Pte Ltd other than the sole purpose for which such drawings, designs and/or other data are provided to licensed users on such terms as CPG Consultants Pte Ltd may prescribe.

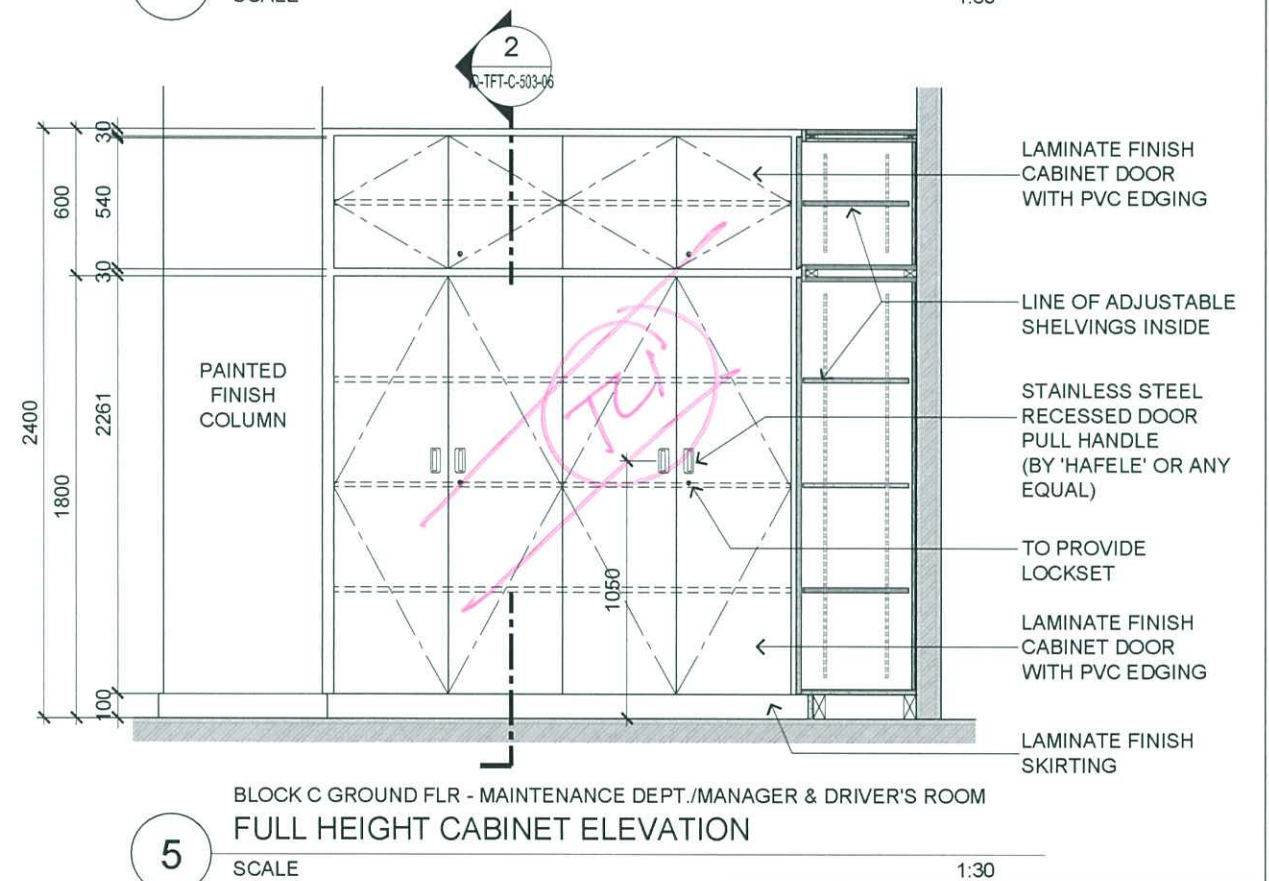
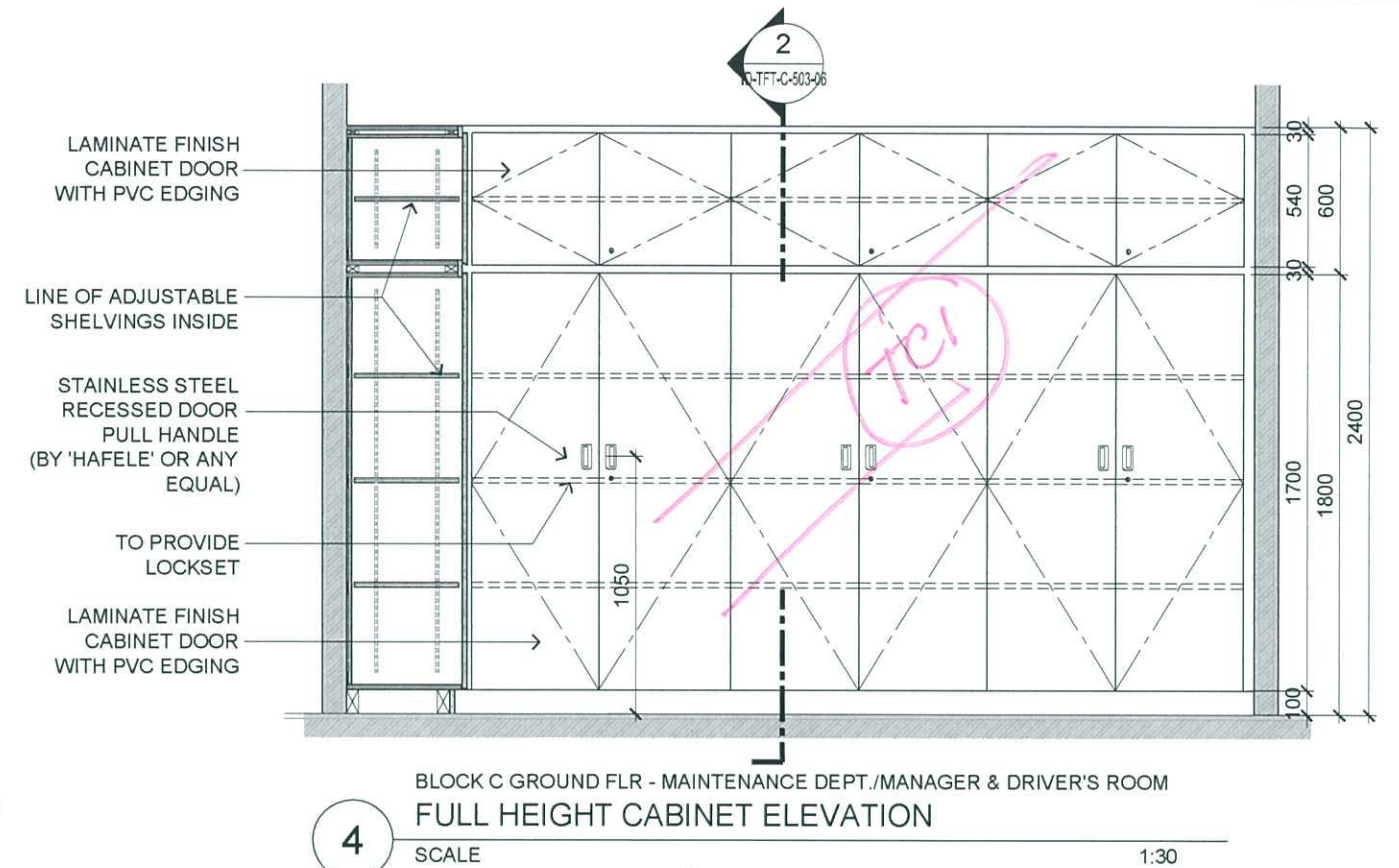
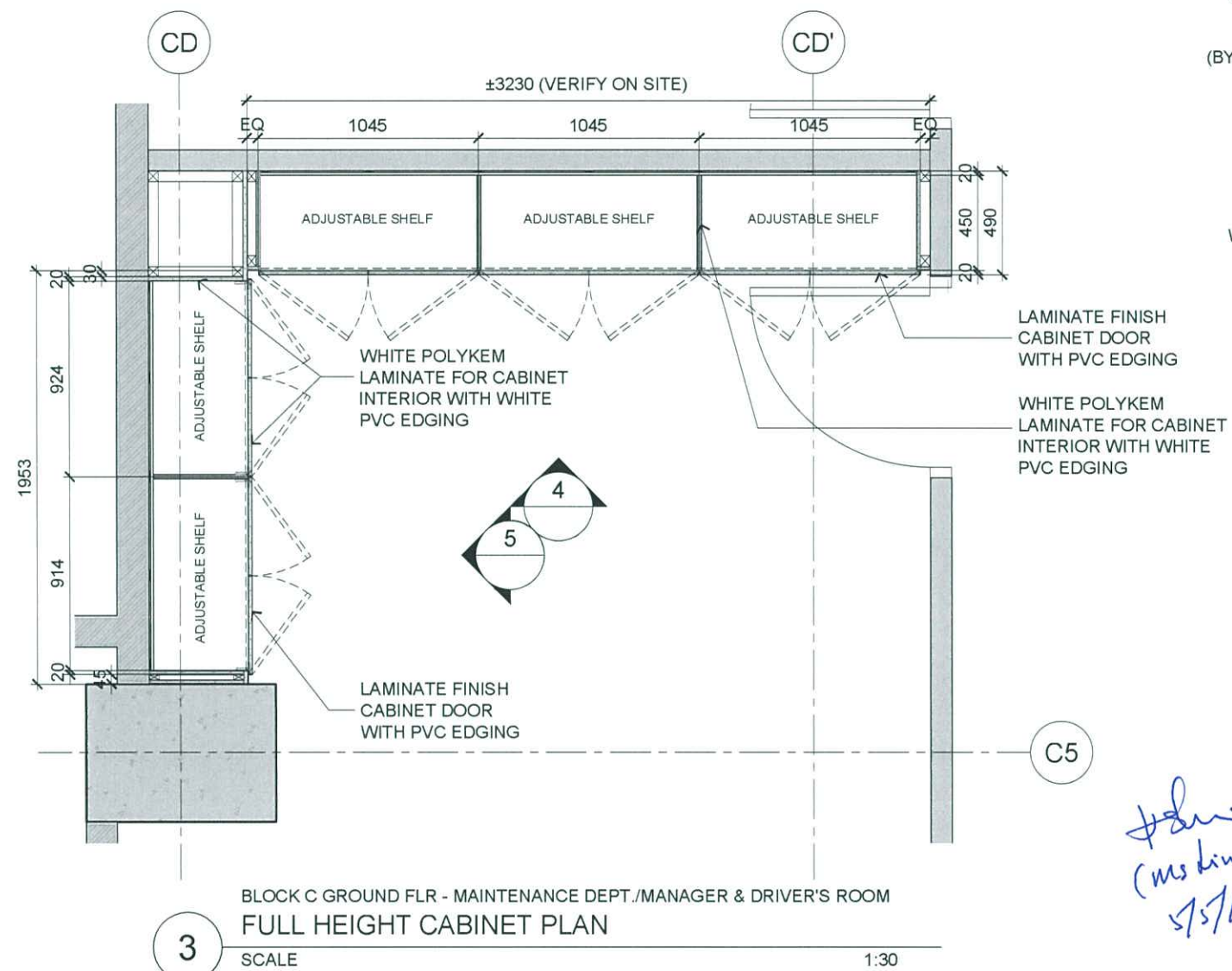
Job Title
 PROPOSED KDU PENANG @ BATU KAWAN,
 PENANG MALAYSIA

Drawing Title
TOP HUNG CABINET DETAILS
 BLOCK C GROUND FLOOR

Senior Vice President	TAN PHENG CHEE
Vice President	PATRICK TAN
Principal Architectural Associate	-
Architectural Associate	-
Principal Interior Designer	BETH SONCUYA

TENDER DRAWING

Drawn By	TEAM	Date:-
Checked By	BETH	Date:-
Project Code : P5679	Drawing No. : ID-TFT-C-503-01	REV. : - Scale : 1:30 CAD Ref.



ARCHITECTURE GROUP-STUDIO A
CPG CONSULTANTS PTE LTD
1 GATEWAY DRIVE #25-01
WESTGATE TOWER, SINGAPORE 608531
TEL: 6357 4888 FAX: 6357 4188

©2014, CPG Consultants Pte Ltd reserves all rights to these drawings, designs and/or any other data contained herein. No part of the said drawings, designs and/or other data may be reproduced, modified, transmitted or used in any form or by any means for any purpose without the prior written consent of CPG Consultants Pte Ltd other than the sole purpose for which such drawings, designs and/or other data are provided to licensed users on such terms as CPG Consultants Pte Ltd may prescribe.

Job Title
PROPOSED KDU PENANG @ BATU KAWAN,
PENANG MALAYSIA

Drawing Title
FULL HEIGHT CABINET DETAILS
BLOCK C GROUND FLOOR

Senior Vice President	TAN PHENG CHEE
Vice President	PATRICK TAN
Principal Architectural Associate	-
Architectural Associate	-
Principal Interior Designer	BETH SONCUYA

Drawn By	TEAM	Date:-
Checked By	BETH	Date:-
Project Code :	Drawing No. :	REV. Scale : 1:30
P5679	ID-TFT-C-503-02	- CAD Ref.

TENDER DRAWING



Shirley
(Mrs. Linn)
5/5/16

TENDER DRAWING				
Drawn By	TEAM		Date:-	
Checked By	BETH		Date:-	
Project Code :	Drawing No. :	REV.	Scale : 1:30	
P5679	ID-TFT-C-503-03	-	CAD Ref.	



ARCHITECTURE GROUP-STUDIO A
CPG CONSULTANTS PTE LTD
1 GATEWAY DRIVE #25-01
WESTGATE TOWER, SINGAPORE 608531
TEL: 6357 4888 FAX: 6357 4188

©2014, CPG Consultants Pte Ltd reserves all rights to these drawings, designs and/or any other data contained herein. No part of the said drawings, designs and/or other data may be reproduced, modified, transmitted or used in any form or by any means for any purpose without the prior written consent of CPG Consultants Pte Ltd other than the sole purpose for which such drawings, designs and/or other data are provided to licensed users on such terms as CPG Consultants Pte Ltd may prescribe.

Job Title

PROPOSED KDU PENANG @ BATU KAWAN,
PENANG MALAYSIA

Drawing Title

**FULL HEIGHT CABINET DETAILS
BLOCK C GROUND FLOOR**

Senior Vice President

TAN PHENG CHEE

Vice President

PATRICK TAN

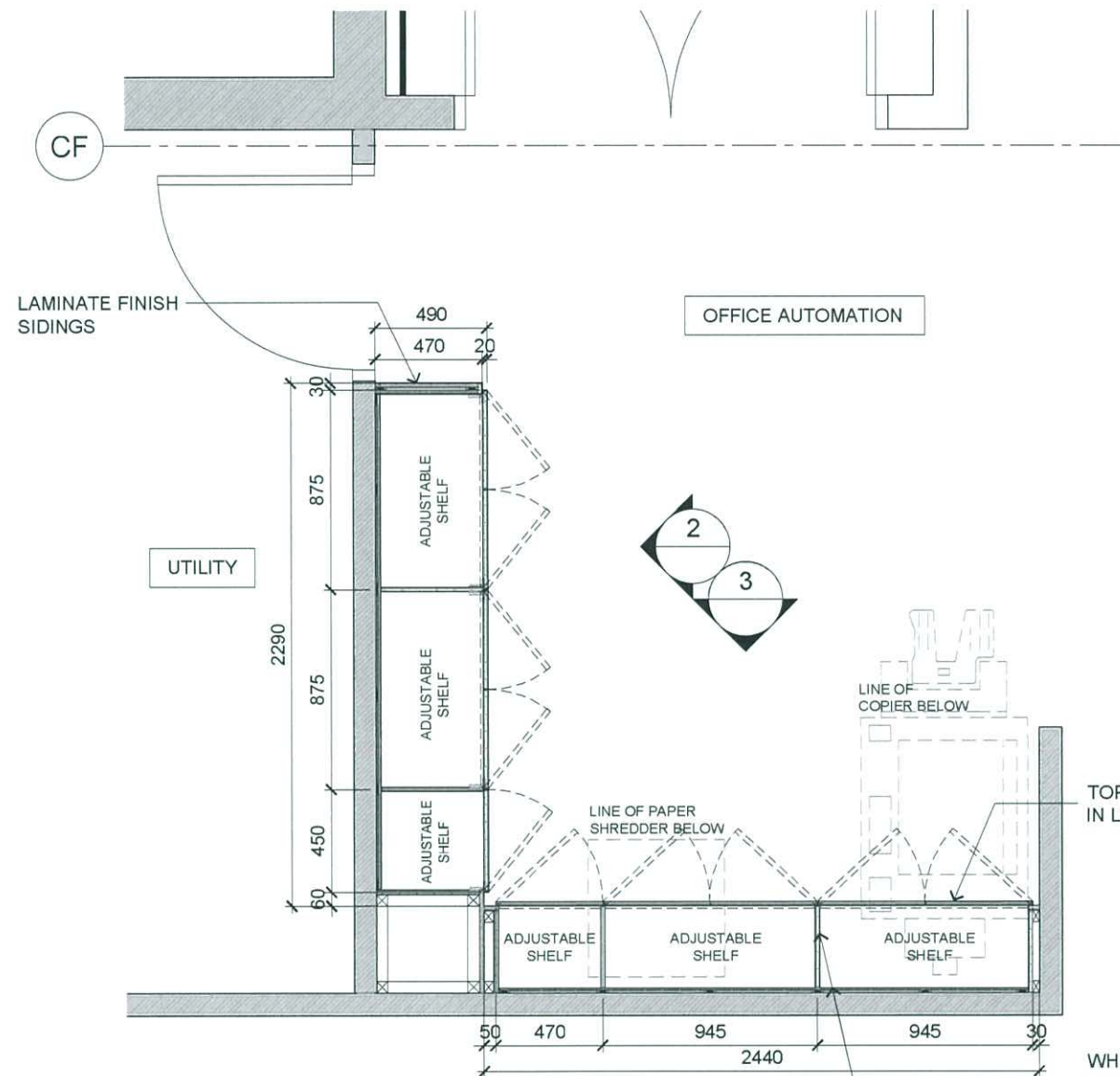
Principal Architectural Associate

e

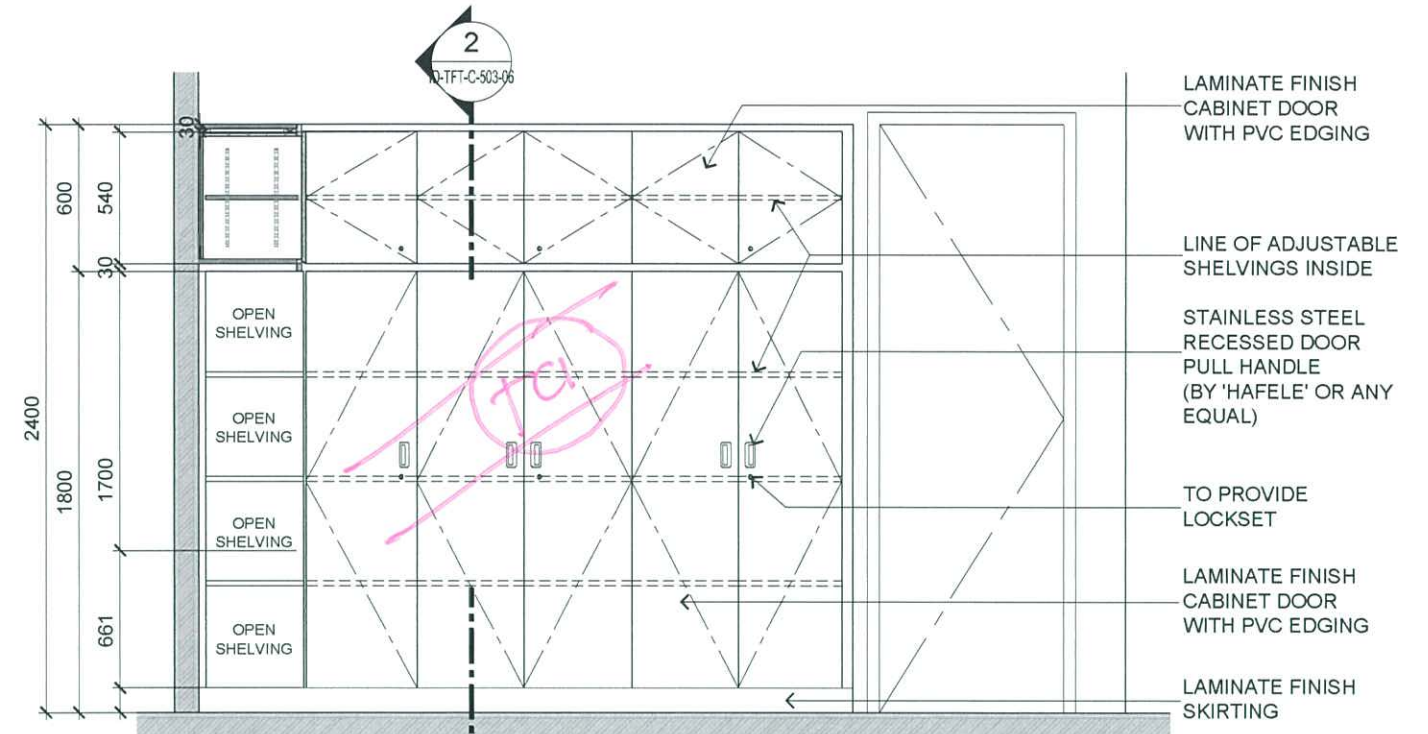
Architectural Associate

Principal Interior Designer

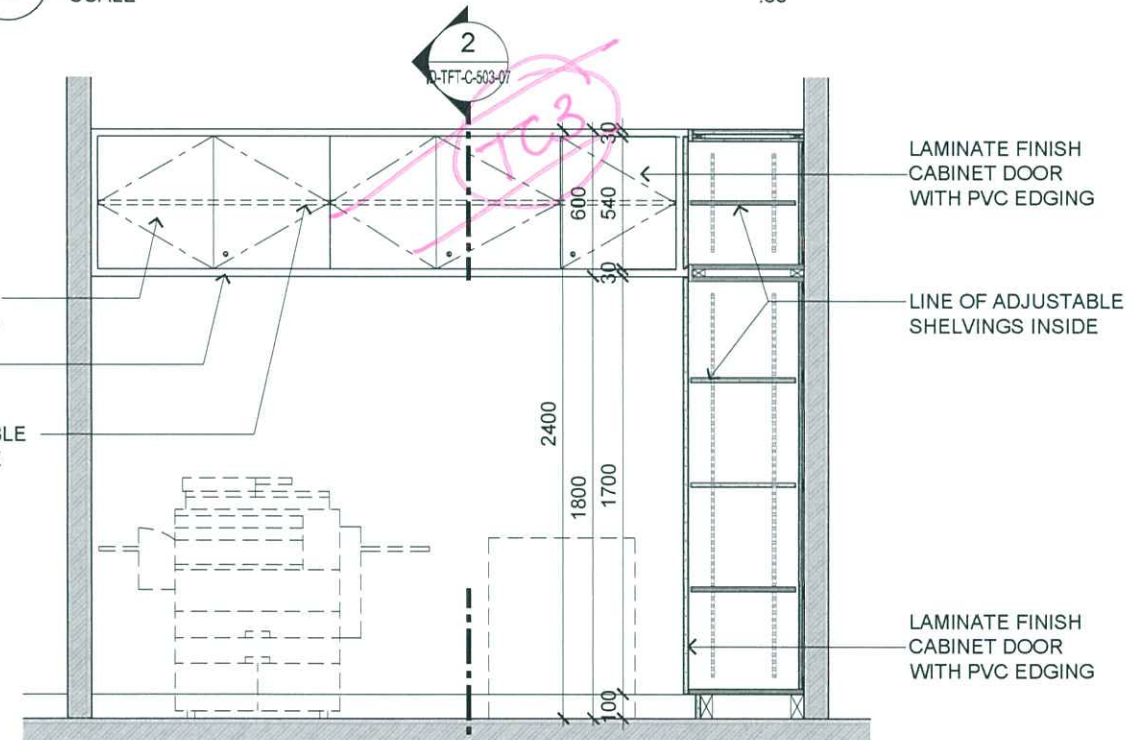
BETH SONCUYA



BLOCK C 1ST FLOOR - SHTCA OFFICE AUTOMATION
FULL HEIGHT & TOP HUNG CABINET PLAN
SCALE 1:30



BLOCK C 1ST FLOOR - SHTCA OFFICE AUTOMATION
FULL HEIGHT & TOP HUNG CABINET ELEVATION
SCALE :30



BLOCK C 1ST FLOOR - SHTCA OFFICE AUTOMATION
FULL HEIGHT & TOP HUNG CABINET ELEVATION
SCALE :30

TENDER DRAWING

Drawn By	TEAM	Date:-
Checked By	BETH	Date:-
Project Code :	Drawing No. :	REV.
P5679	ID-TFT-C-503-04	-
Scale : 1:30	CAD Ref.	



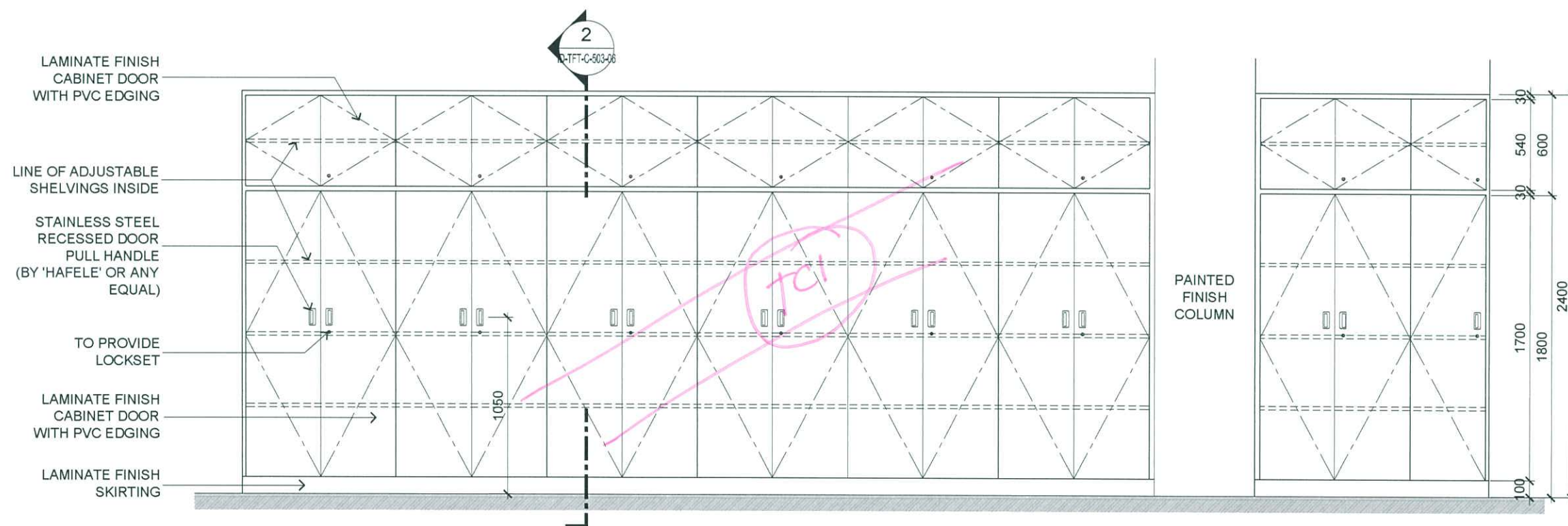
ARCHITECTURE GROUP-STUDIO A
CPG CONSULTANTS PTE LTD
1 GATEWAY DRIVE #25-01
WESTGATE TOWER, SINGAPORE 608531
TEL: 6357 4888 FAX: 6357 4188

©2014, CPG Consultants Pte Ltd reserves all rights to these drawings, designs and/or any other data contained herein. No part of the said drawings, designs and/or other data may be reproduced, modified, transmitted or used in any form or by any means for any purpose without the prior written consent of CPG Consultants Pte Ltd other than the sole purpose for which such drawings, designs and/or other data are provided to licensed users on such terms as CPG Consultants Pte Ltd may prescribe.

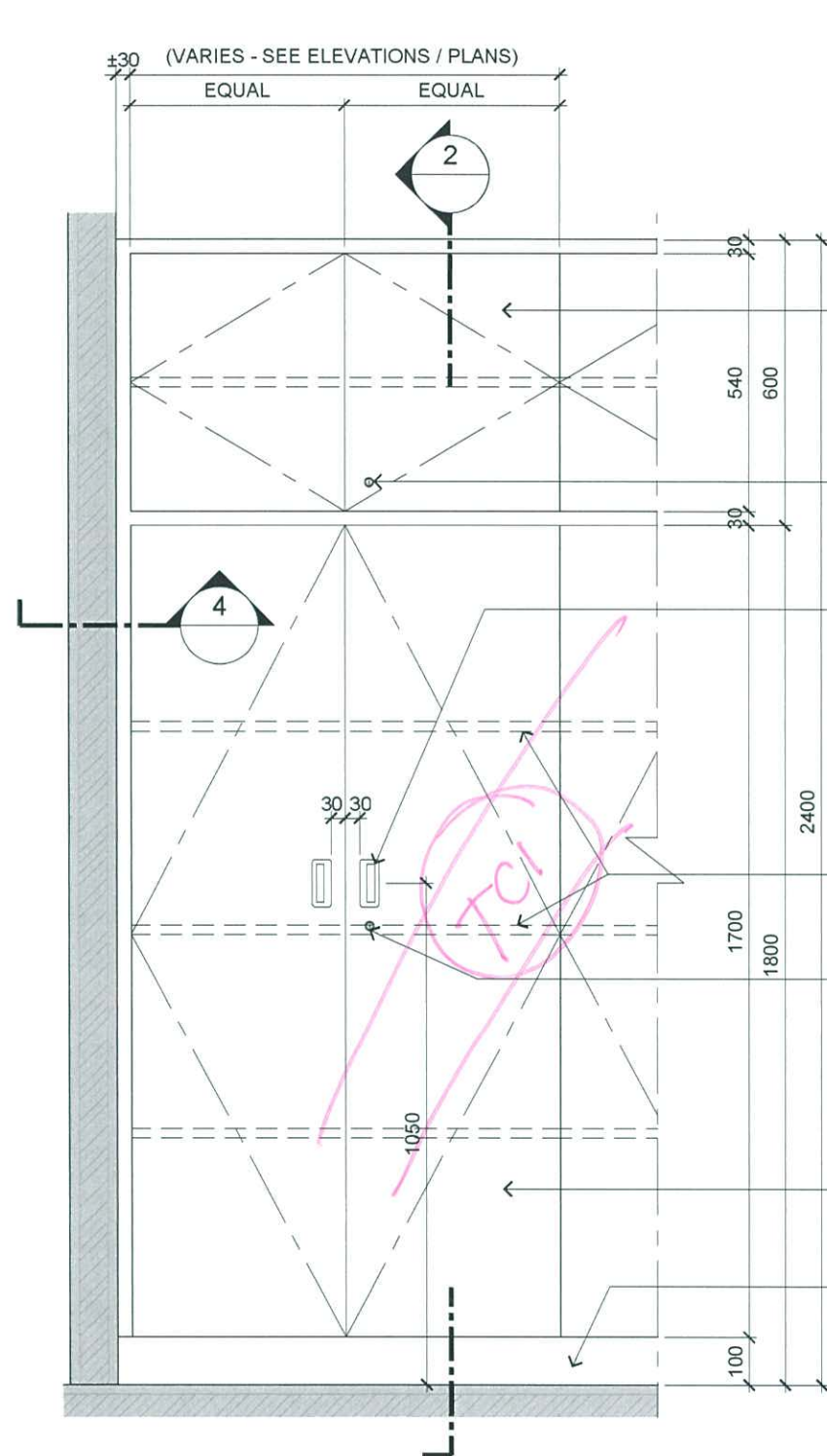
Job Title
PROPOSED KDU PENANG @ BATU KAWAN,
PENANG MALAYSIA
Drawing Title
FULL HEIGHT & TOP HUNG CABINET DETAILS
BLOCK C 1ST FLOOR

Senior Vice President	TAN PHENG CHEE
Vice President	PATRICK TAN
Principal Architectural Associate	-
Architectural Associate	-
Principal Interior Designer	BETH SONCUYA

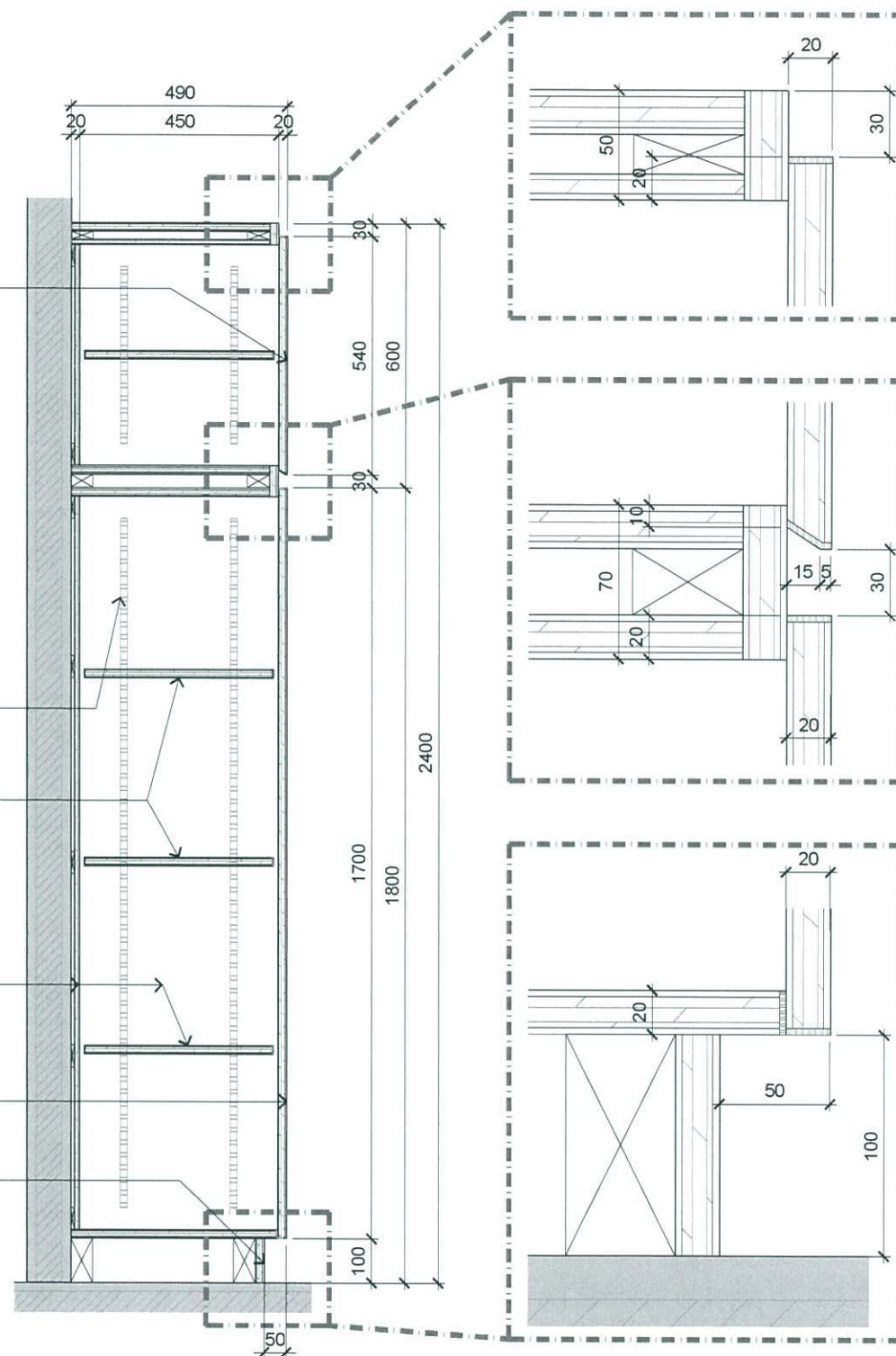
Handwritten signature and date:
5/5/16



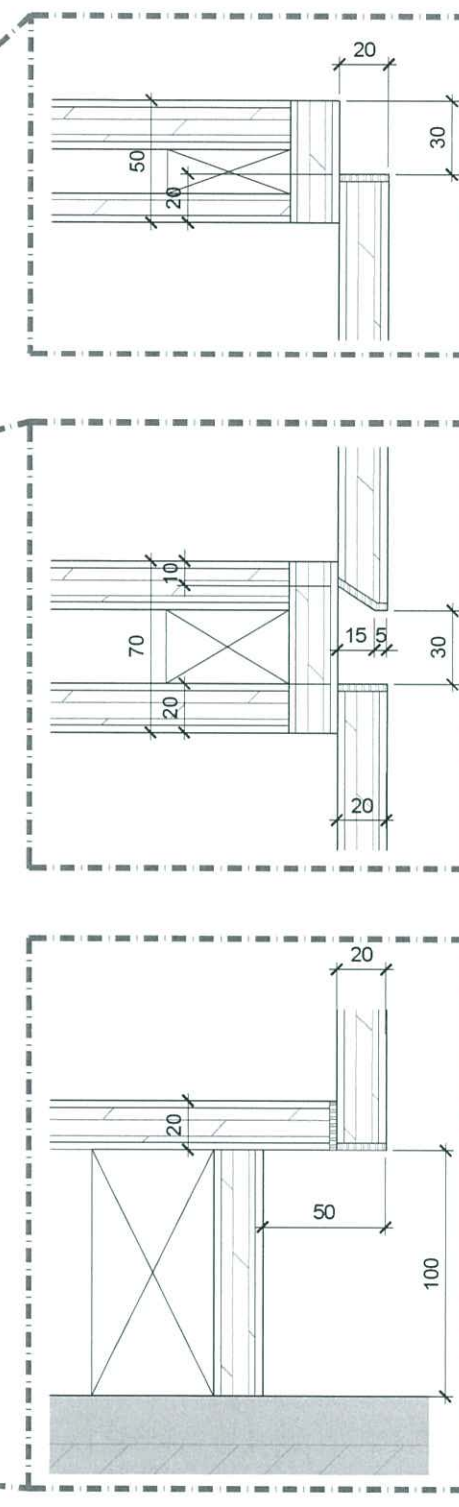
5



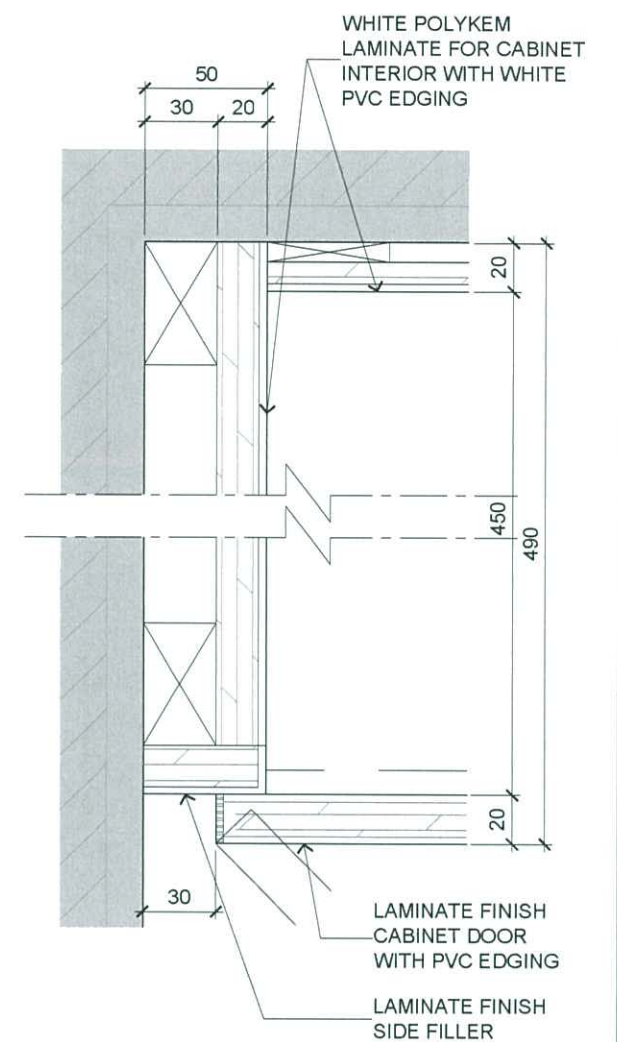
1 TYPICAL FULL HEIGHT CABINET BLOW UP ELEVATION DETAILS
SCALE 1:15



2 TYPICAL FULL HEIGHT CABINET BLOW UP SECTION DETAILS
SCALE 1:15



3 TYPICAL FULL HEIGHT CABINET SPOT DETAILS
SCALE 1:3



4 TYPICAL FULL HEIGHT CABINET SPOT DETAILS
SCALE 1:3

Handwritten note:
#shw
(ms km)
5/5/16



ARCHITECTURE GROUP-STUDIO A
CPG CONSULTANTS PTE LTD
1 GATEWAY DRIVE #25-01
WESTGATE TOWER, SINGAPORE 608531
TEL: 6357 4888 FAX: 6357 4188

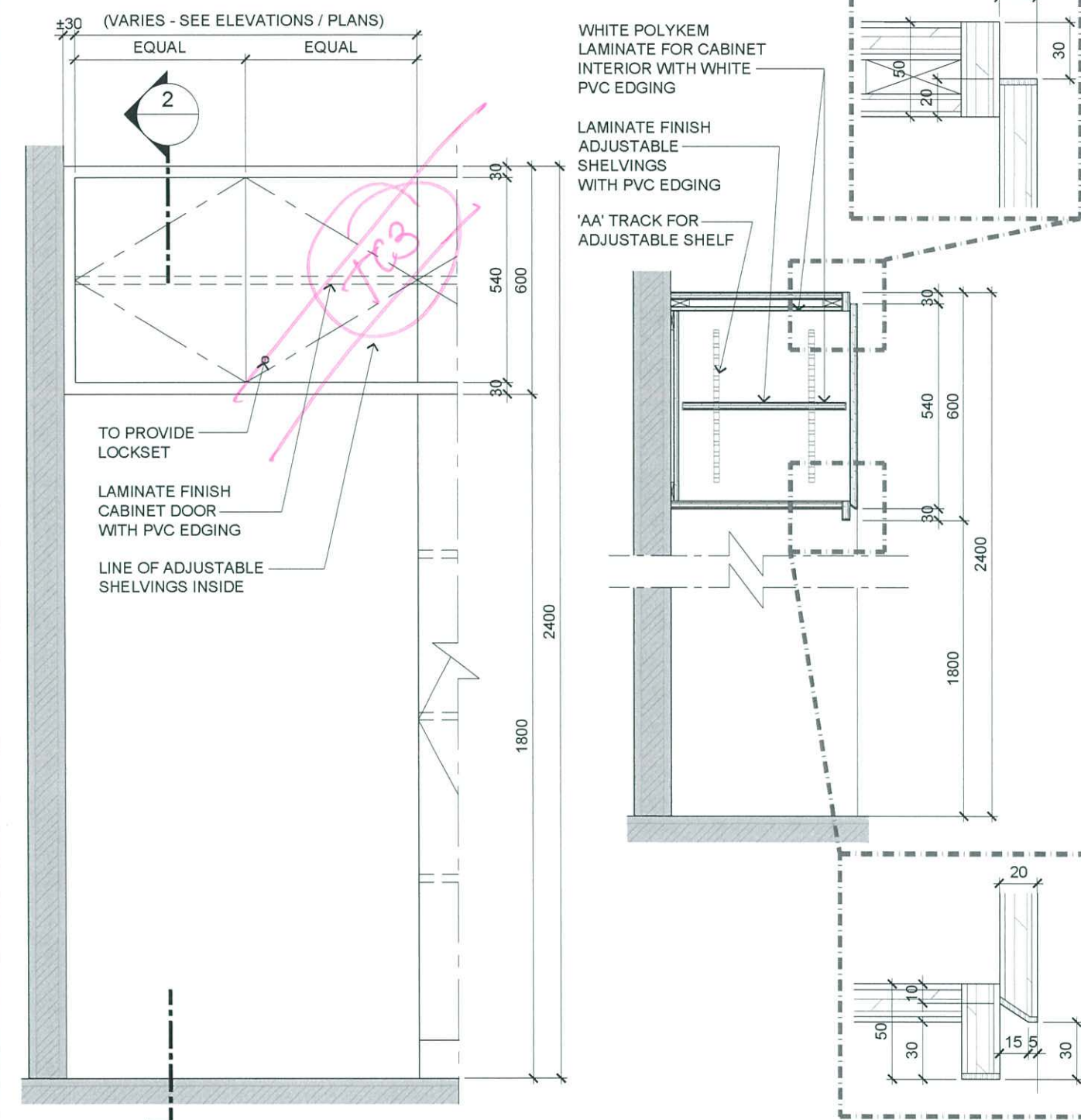
©2014, CPG Consultants Pte Ltd reserves all rights to these drawings, designs and/or any other data contained herein. No part of the said drawings, designs and/or other data may be reproduced, modified, transmitted or used in any form or by any means for any purpose without the prior written consent of CPG Consultants Pte Ltd other than the sole purpose for which such drawings, designs and/or other data are provided to licensed users on such terms as CPG Consultants Pte Ltd may prescribe.

Job Title
PROPOSED KDU PENANG @ BATU KAWAN,
PENANG MALAYSIA
Drawing Title
FULL HEIGHT CABINET TYPICAL DETAILS

Senior Vice President	TAN PHENG CHEE
Vice President	PATRICK TAN
Principal Architectural Associate	-
Architectural Associate	-
Principal Interior Designer	BETH SONCUYA

TENDER DRAWING					
Drawn By	TEAM		Date:-		
Checked By	BETH		Date:-		
Project Code :	Drawing No. :	REV.	Scale :	AS SHOWN	
P5679	ID-TFT-C-503-06	-	CAD Ref.		

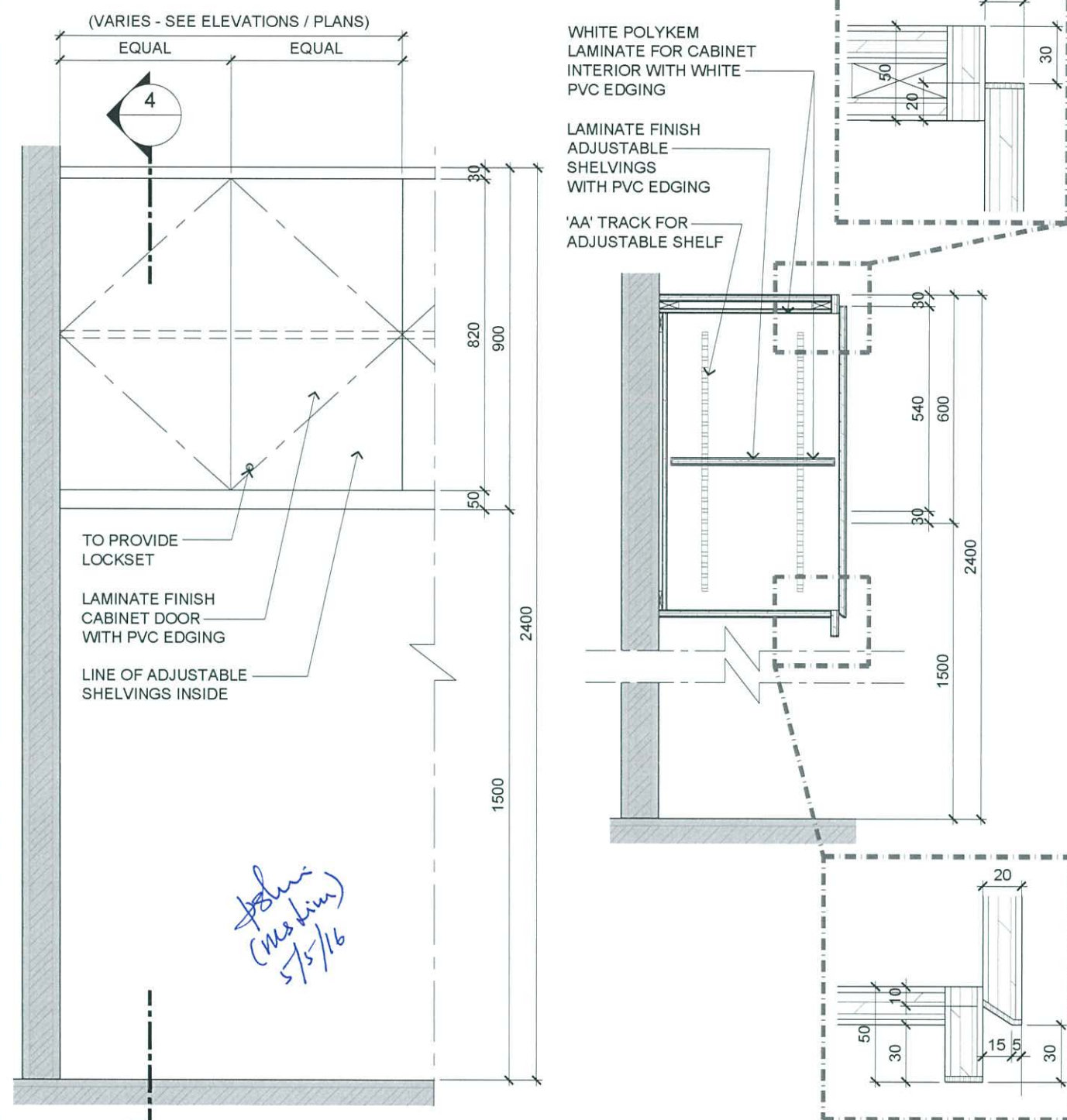
TOP-HUNG CABINET ADJACENT TO FULL HEIGHT CABINET



1 TYPICAL TOP HUNG CABINET
BLOW UP ELEVATION DETAILS
SCALE 1:15

2 TYPICAL FULL HEIGHT CABINET
BLOW UP SECTION DETAILS
SCALE 1:15

TOP-HUNG CABINET NOT CONNECTED TO FULL HEIGHT CABINET



3 TYPICAL TOP HUNG CABINET
BLOW UP ELEVATION DETAILS
SCALE 1:15

4 TYPICAL FULL HEIGHT CABINET
BLOW UP SECTION DETAILS
SCALE 1:15



ARCHITECTURE GROUP-STUDIO A
CPG CONSULTANTS PTE LTD
1 GATEWAY DRIVE #25-01
WESTGATE TOWER, SINGAPORE 608531
TEL: 6357 4888 FAX: 6357 4188

©2014, CPG Consultants Pte Ltd reserves all rights to these drawings, designs and/or any other data contained herein. No part of the said drawings, designs and/or other data may be reproduced, modified, transmitted or used in any form or by any means for any purpose without the prior written consent of CPG Consultants Pte Ltd other than the sole purpose for which such drawings, designs and/or other data are provided to licensed users on such terms as CPG Consultants Pte Ltd may prescribe.

Job Title
PROPOSED KDU PENANG @ BATU KAWAN,
PENANG MALAYSIA
Drawing Title
TOP HUNG CABINET TYPICAL DETAILS

Senior Vice President	TAN PHENG CHEE
Vice President	PATRICK TAN
Principal Architectural Associate	-
Architectural Associate	-
Principal Interior Designer	BETH SONCUYA

TENDER DRAWING			
Drawn By	TEAM	Date:-	
Checked By	BETH	Date:-	
Project Code :	Drawing No. :	REV.	Scale : 1:15
P5679	ID-TFT-C-503-07	-	CAD Ref.