

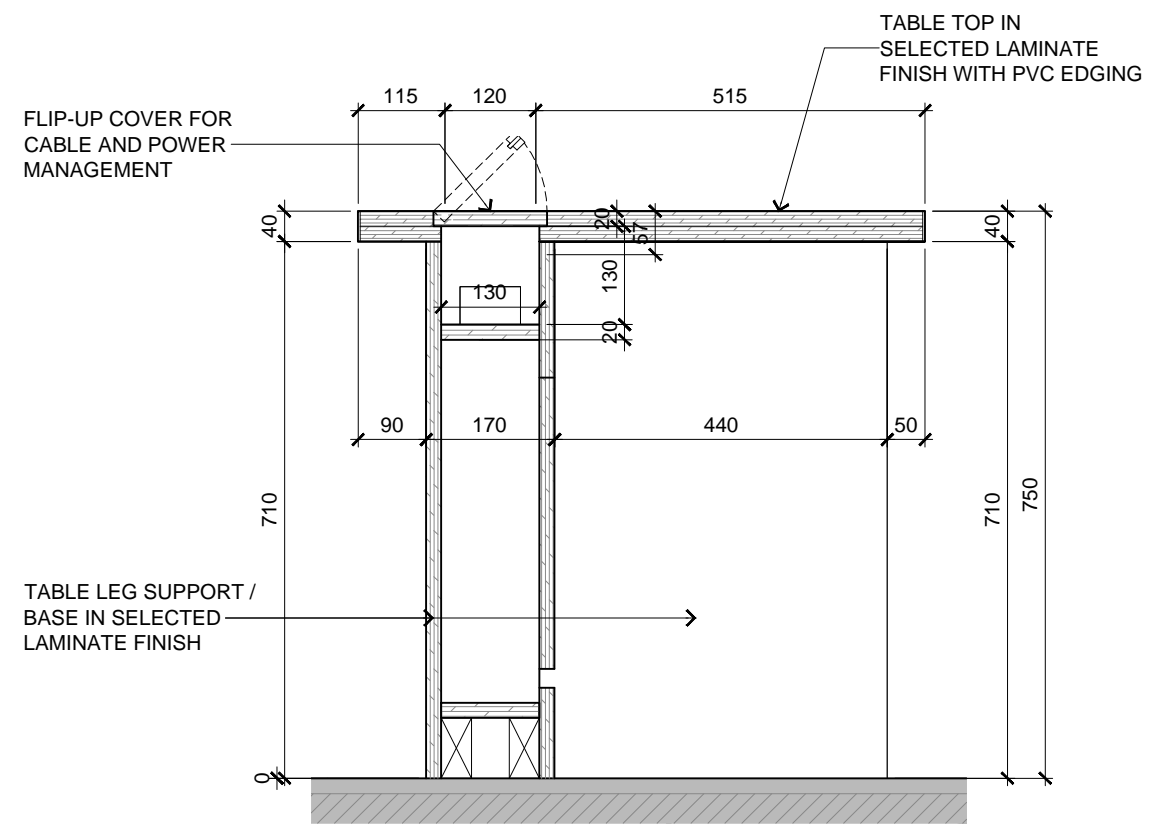
BLOCK B 4TH & 5TH FLOOR - SMART CLASSROOM TYPE 2

TABLE PLAN DETAIL

1

SCALE

1:20



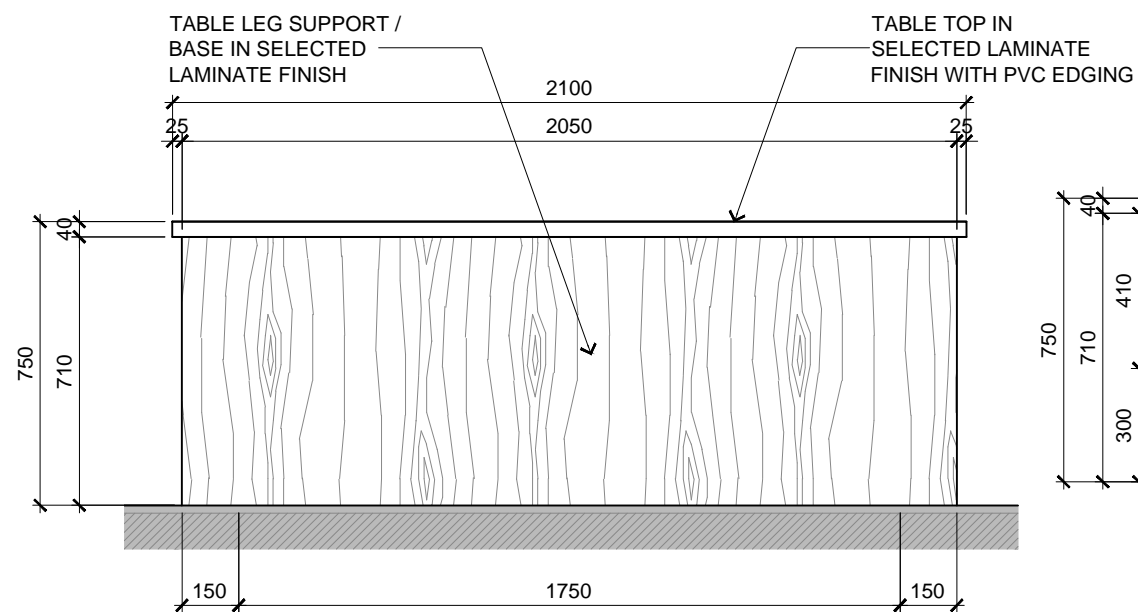
BLOCK B 4TH & 5TH FLOOR - SMART CLASSROOM TYPE 2

TABLE SECTION DETAIL

5

SCALE

1:20



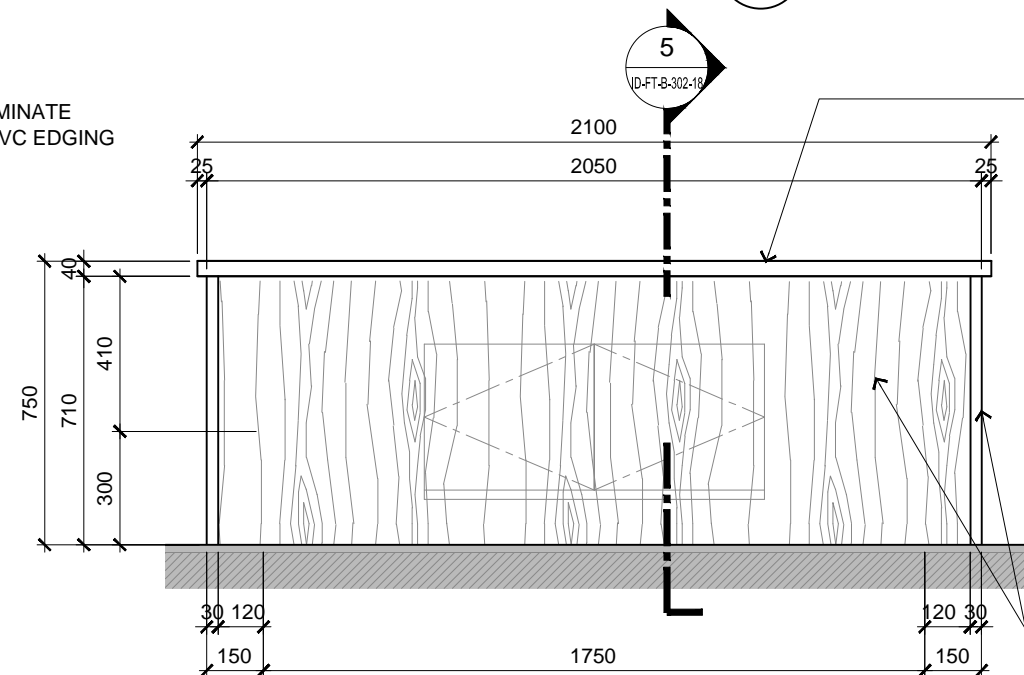
BLOCK B 4TH & 5TH FLOOR - SMART CLASSROOM TYPE 2

TABLE ELEVATION DETAIL

2

SCALE

1:20



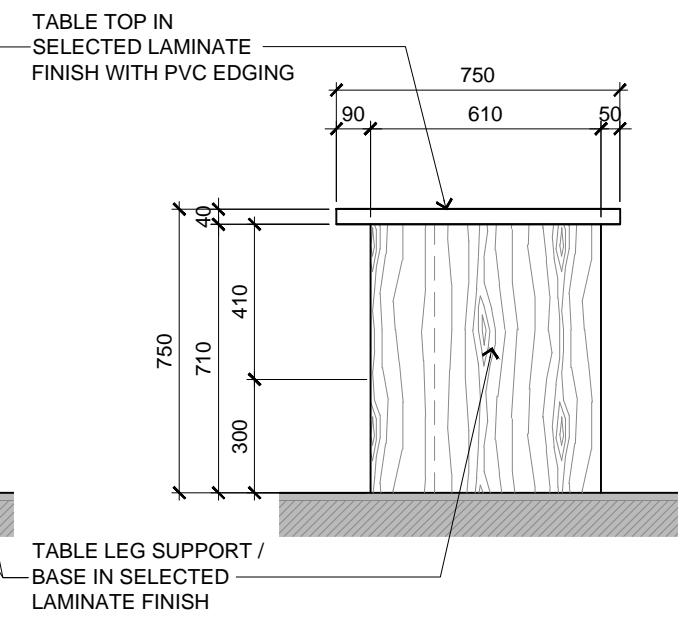
BLOCK B 4TH & 5TH FLOOR - SMART CLASSROOM TYPE 2

TABLE ELEVATION DETAIL

3

SCALE

1:20



BLOCK B 4TH & 5TH FLOOR - SMART CLASSROOM TYPE 2

TABLE SIDE ELEVATION DETAIL

4

SCALE

1:20



ARCHITECTURE GROUP-STUDIO A
CPG CONSULTANTS PTE LTD
1 GATEWAY DRIVE #25-01
WESTGATE TOWER, SINGAPORE 608531
TEL: 6357 4888 FAX: 6357 4188

©2014, CPG Consultants Pte Ltd reserves all rights to these drawings, designs and/or any other data contained herein. No part of the said drawings, designs and/or other data may be reproduced, modified, transmitted or used in any form or by any means for any purpose without the prior written consent of CPG Consultants Pte Ltd other than the sole purpose for which such drawings, designs and/or other data are provided to licensed users on such terms as CPG Consultants Pte Ltd may prescribe.

Job Title
INTERIOR DESIGN WORKS FOR PROPOSED KDU PENANG
@ BATU KAWAN, PENANG MALAYSIA

Drawing Title
TYPICAL SMART CLASSROOM TYPE 2 TABLE DETAILS
BLOCK B 4TH & 5TH FLOOR - SMART CLASSROOM TYPE 2

Senior Vice President	TAN PHENG CHEE
Vice President	PATRICK TAN
Principal Architectural Associate	-
Architectural Associate	-
Principal Interior Designer	BETH SONCUYA

TENDER DRAWING

Drawn By	TEAM	Date: JULY 16
Checked By	BETH	Date: JULY 16
Project Code : P5679	Drawing No. : ID-FT-B-302-18	REV. : - Scale : AS SHOWN CAD Ref.