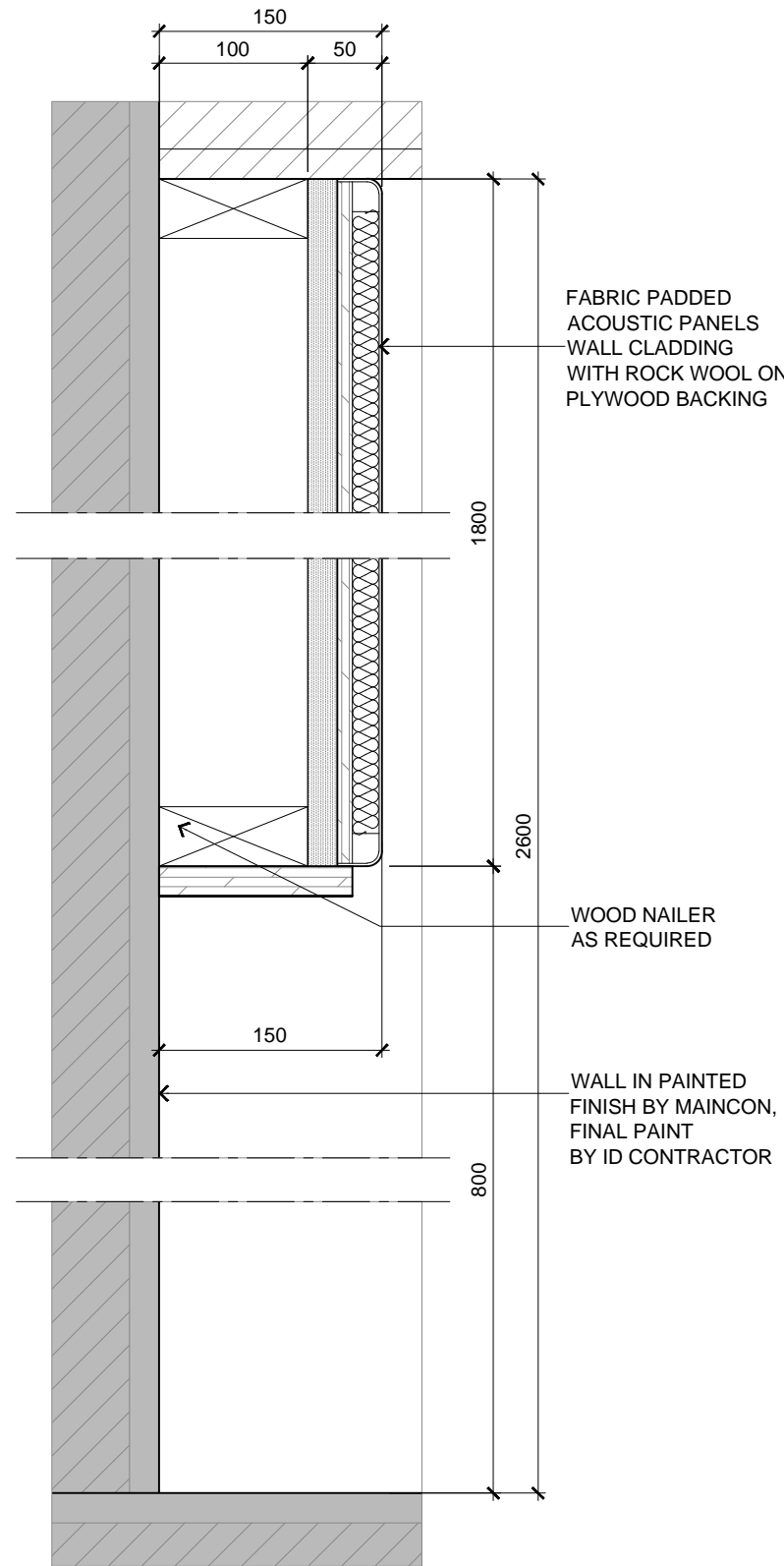
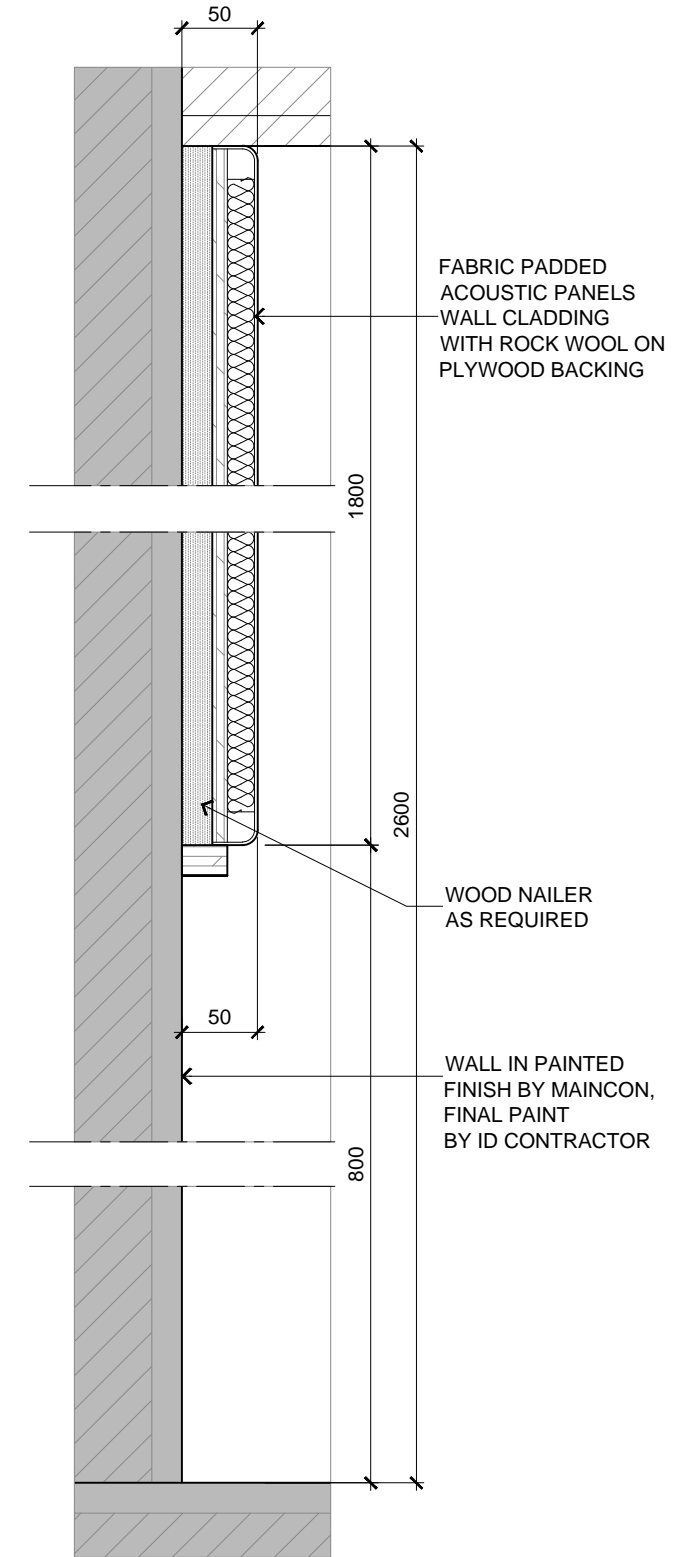


BLOCK C 1ST FLOOR
DEMO KITCHEN PADDED WALL DETAILS
 SCALE 1:5



BLOCK C 1ST FLOOR
DEMO KITCHEN PADDED WALL DETAILS
 SCALE 1:5



BLOCK C 1ST FLOOR
DEMO KITCHEN PADDED WALL DETAILS
 SCALE 1:5

TENDER DRAWING



ARCHITECTURE GROUP-STUDIO A
CPG CONSULTANTS PTE LTD
 1 GATEWAY DRIVE #25-01
 WESTGATE TOWER, SINGAPORE 608531
 TEL: 6357 4888 FAX: 6357 4188

©2014, CPG Consultants Pte Ltd reserves all rights to these drawings, designs and/or any other data contained herein. No part of the said drawings, designs and/or other data may be reproduced, modified, transmitted or used in any form or by any means for any purpose without the prior written consent of CPG Consultants Pte Ltd other than the sole purpose for which such drawings, designs and/or other data are provided to licensed users on such terms as CPG Consultants Pte Ltd may prescribe.

Job Title
 INTERIOR DESIGN WORKS FOR PROPOSED KDU PENANG
 @ BATU KAWAN, PENANG MALAYSIA

Drawing Title
DEMO KITCHEN ACOUSTIC PADDED WALL DETAILS
 BLOCK C 1ST FLOOR

Senior Vice President	TAN PHENG CHEE
Vice President	PATRICK TAN
Principal Architectural Associate	-
Architectural Associate	-
Principal Interior Designer	BETH SONCUYA

Drawn By	TEAM	Date: JULY 16
Checked By	BETH	Date: JULY 16
Project Code : P5679	Drawing No. : ID-FT-C-303-26a	REV. -
Scale : 1:5		CAD Ref.