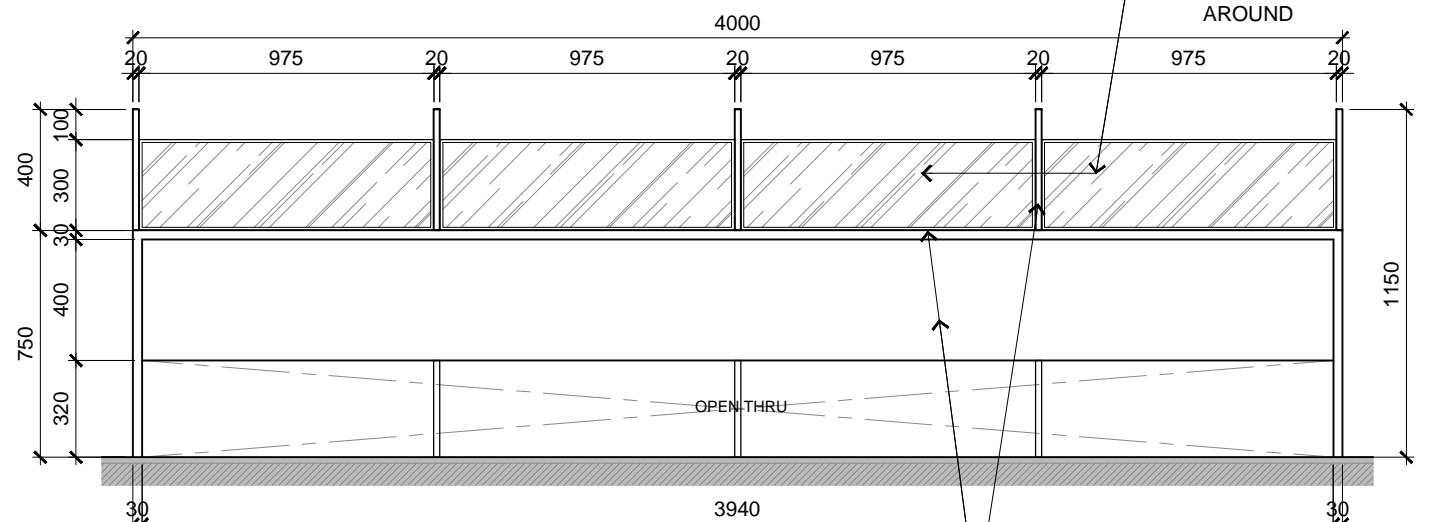


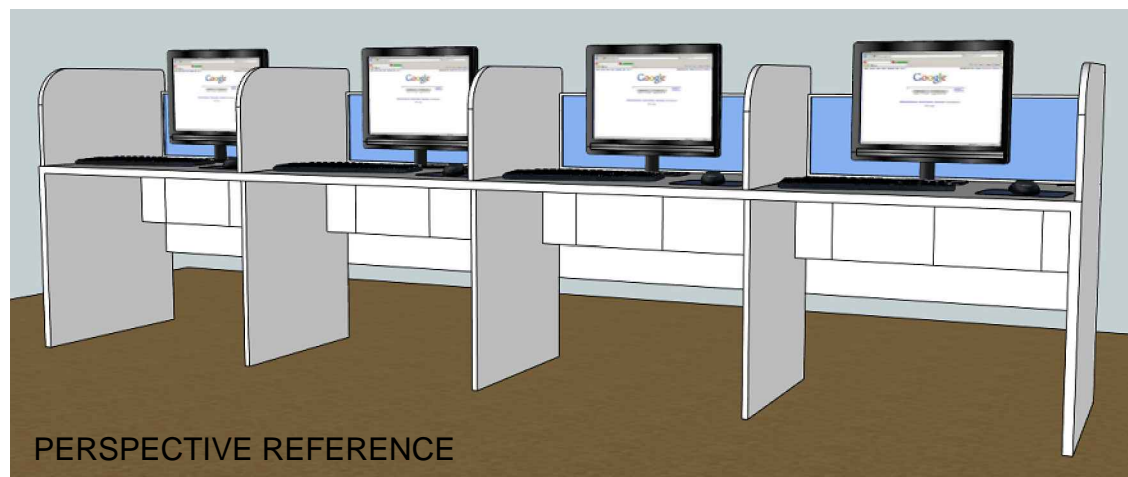
BLOCK E - MULTIMEDIA LANGUAGE LAB
TYPICAL TABLE FITMENT PLAN DETAIL

1
SCALE 1:25

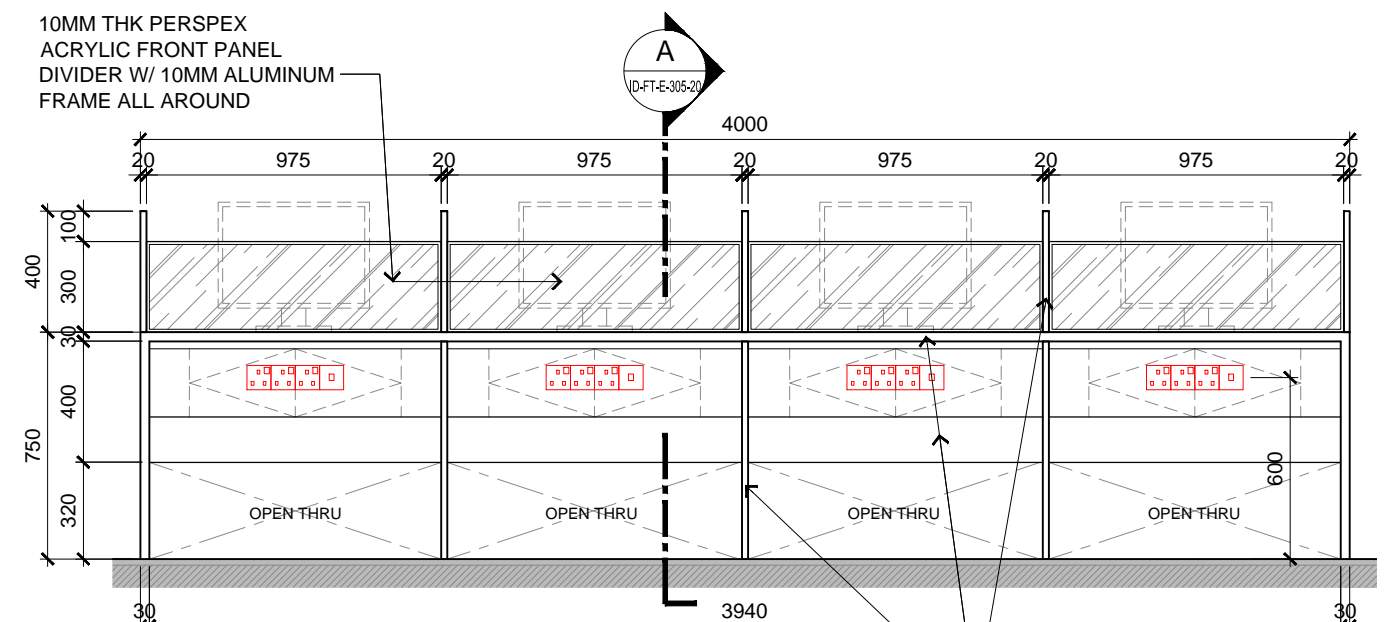


BLOCK E - MULTIMEDIA LANGUAGE LAB
TYPICAL TABLE FITMENT ELEVATION DETAIL

2
SCALE 1:25

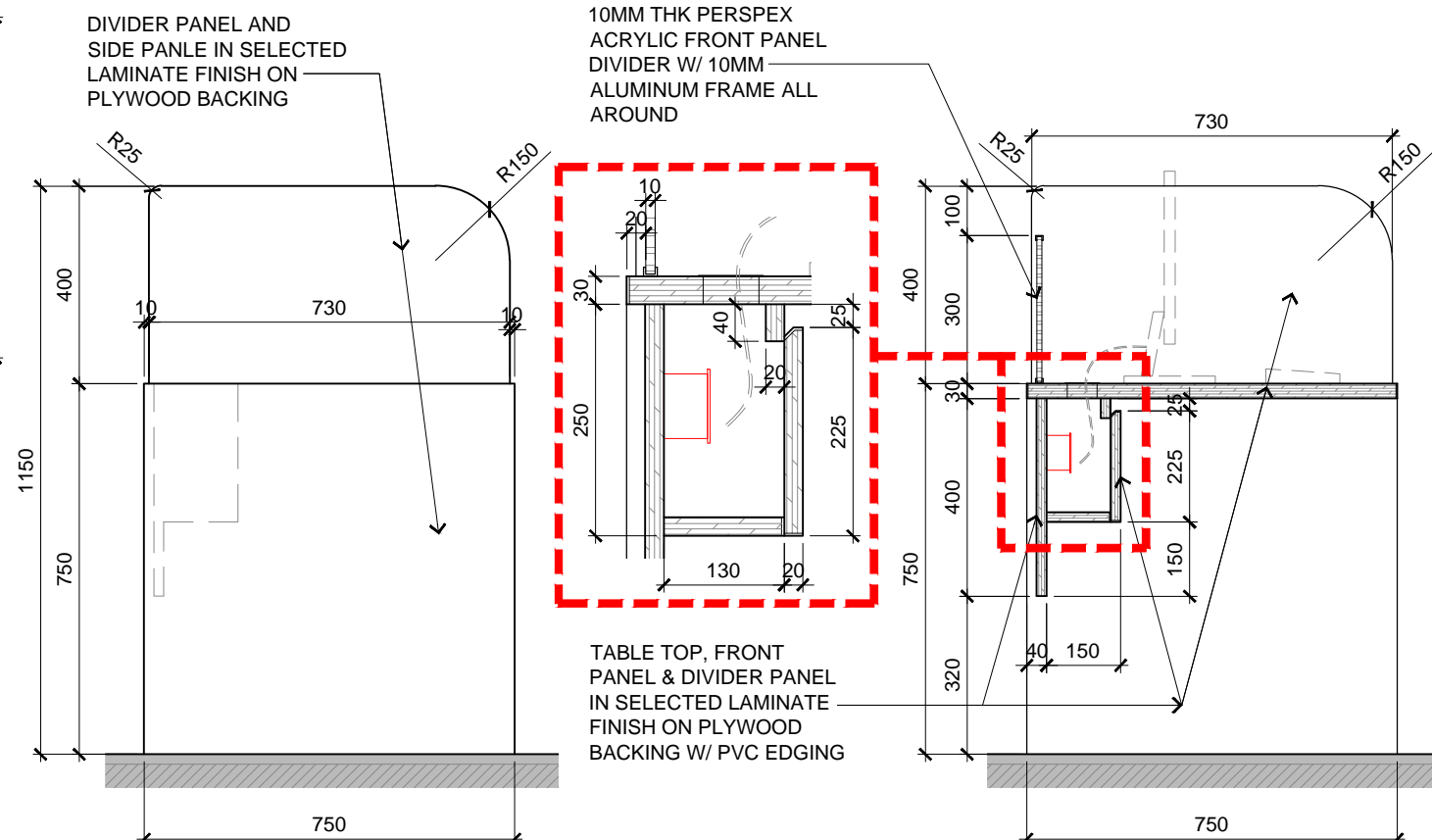


PERSPECTIVE REFERENCE



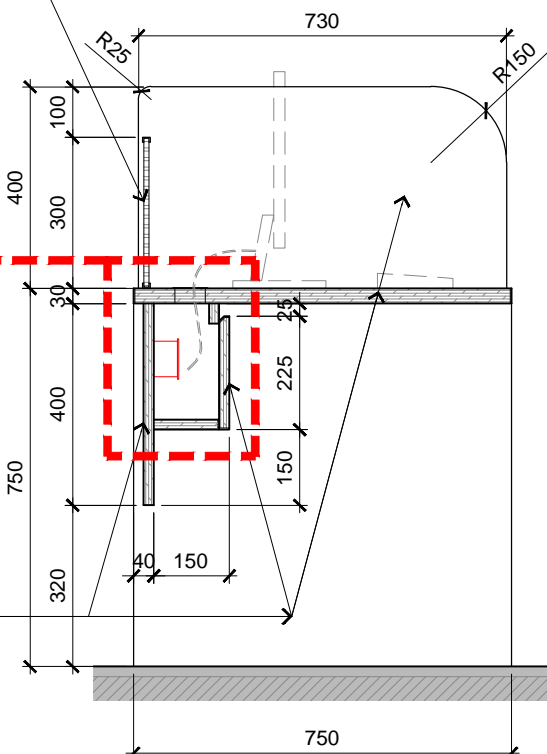
BLOCK E - MULTIMEDIA LANGUAGE LAB
TYPICAL TABLE FITMENT ELEVATION DETAIL

3
SCALE 1:25



BLOCK E - MULTIMEDIA LANGUAGE LAB
TYPICAL TABLE FITMENT ELEVATION DETAIL

4
SCALE 1:15



BLOCK E - MULTIMEDIA LANGUAGE LAB
SECTION DETAIL - A

A
SCALE 1:15



ARCHITECTURE GROUP-STUDIO A
CPG CONSULTANTS PTE LTD
1 GATEWAY DRIVE #25-01
WESTGATE TOWER, SINGAPORE 608531
TEL: 6357 4888 FAX: 6357 4188

©2014, CPG Consultants Pte Ltd reserves all rights to these drawings, designs and/or any other data contained herein. No part of the said drawings, designs and/or other data may be reproduced, modified, transmitted or used in any form or by any means for any purpose without the prior written consent of CPG Consultants Pte Ltd other than the sole purpose for which such drawings, designs and/or other data are provided to licensed users on such terms as CPG Consultants Pte Ltd may prescribe.

Job Title
INTERIOR DESIGN WORKS FOR PROPOSED KDU PENANG
@ BATU KAWAN, PENANG MALAYSIA

Drawing Title
MULTIMEDIA LANGUAGE LAB FITMENT DETAIL
BLOCK E 3RD FLOOR

Senior Vice President	TAN PHENG CHEE
Vice President	PATRICK TAN
Principal Architectural Associate	-
Architectural Associate	-
Principal Interior Designer	BETH SONCUYA

Drawn By	TEAM	Date:	JULY 16
Checked By	BETH	Date:	JULY 16
Project Code :	P5679	Drawing No. :	ID-FT-E-305-20
REV.	-	Scale :	AS SHOWN
		CAD Ref.	

TENDER DRAWING