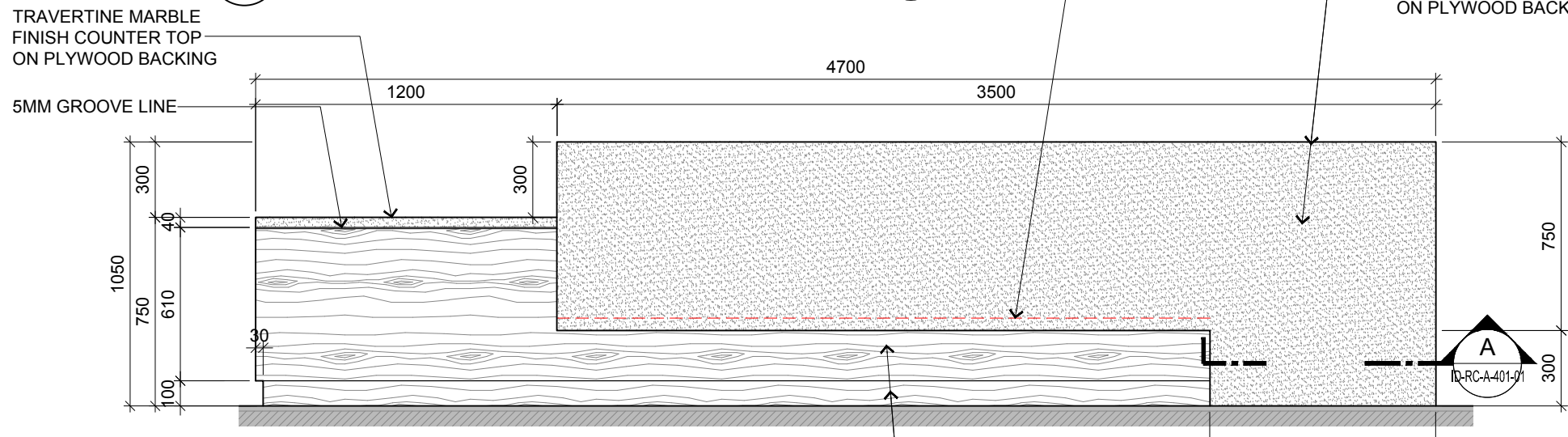


**BLOCK A GROUND FLOOR - RECEPTION & GALLERY
RECEPTION COUNTER PLAN DETAIL**

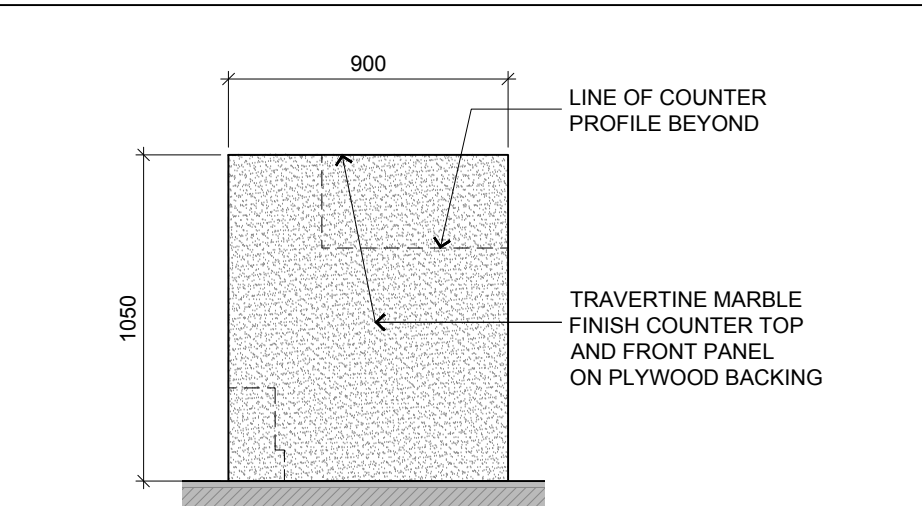
SCALE 1:25



**BLOCK A GROUND FLOOR - RECEPTION & GALLERY
RECEPTION COUNTER ELEVATION**

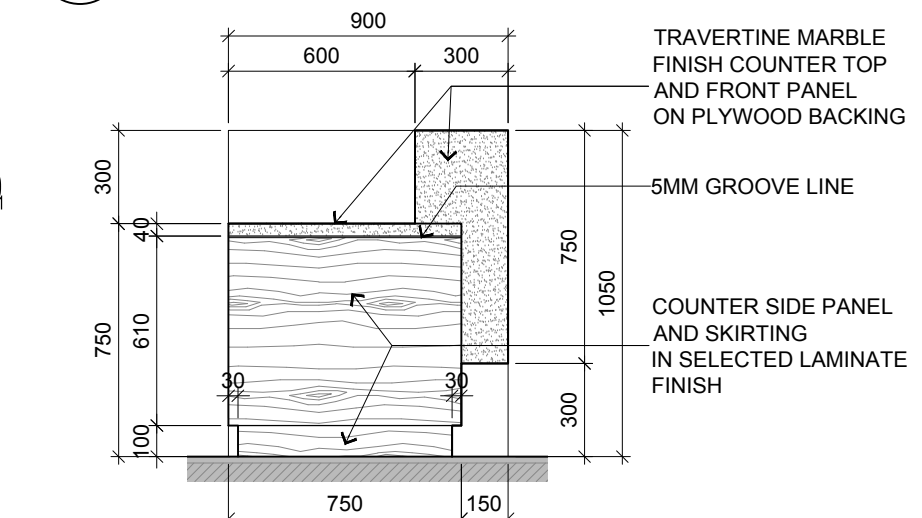
SCALE 1:25

RC-01



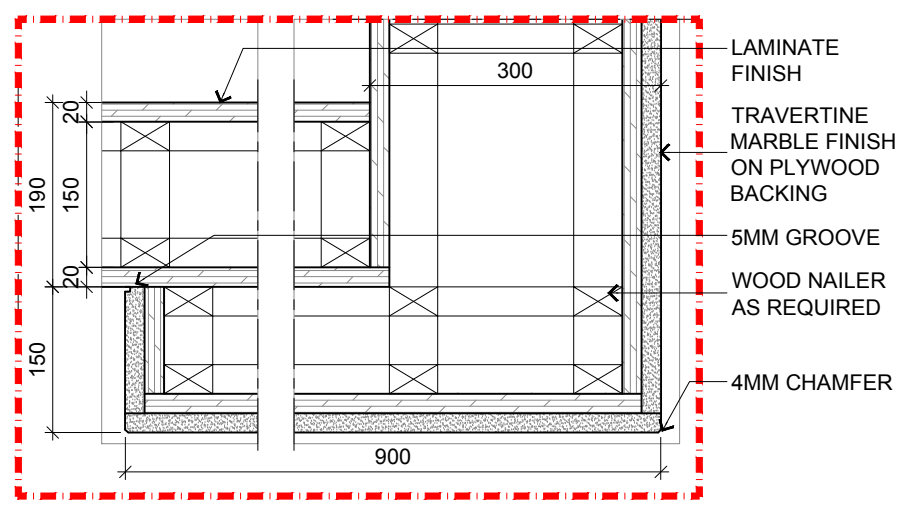
**BLOCK A GROUND FLOOR - RECEPTION & GALLERY
RECEPTION COUNTER ELEVATION**

SCALE 1:25




**BLOCK A GROUND FLOOR - RECEPTION & GALLERY
RECEPTION COUNTER ELEVATION**

SCALE 1:25



DETAIL A

TENDER DRAWING

 <div>ARCHITECTURE GROUP-STUDIO A CPG CONSULTANTS PTE LTD 1 GATEWAY DRIVE #25-01 WESTGATE TOWER, SINGAPORE 608531 TEL: 6357 4888 FAX: 6357 4188</div>	©2014, CPG Consultants Pte Ltd reserves all rights to these drawings, designs and/or any other data contained herein. No part of the said drawings, designs and/or other data may be reproduced, modified, transmitted or used in any form or by any means for any purpose without the prior written consent of CPG Consultants Pte Ltd other than the sole purpose for which such drawings, designs and/or other data are provided to licensed users on such terms as CPG Consultants Pte Ltd may prescribe.	Job Title	Senior Vice President	TAN PHENG CHEE		Drawn By	TEAM		Date: JULY 16
		INTERIOR DESIGN WORKS FOR PROPOSED KDU PENANG @ BATU KAWAN, PENANG MALAYSIA	Vice President	PATRICK TAN		Checked By	BETH		Date: JULY 16
			Principal Architectural Associate	-					
		Drawing Title RC-01 RECEPTION COUNTER DETAILS BLOCK A GROUND FLOOR - RECEPTION & GALLERY	Architectural Associate	-		Project Code : P5679	Drawing No. : ID-RC-A-401-01	REV. -	Scale : 1:25
			Principal Interior Designer	BETH SONCUYA					CAD Ref.