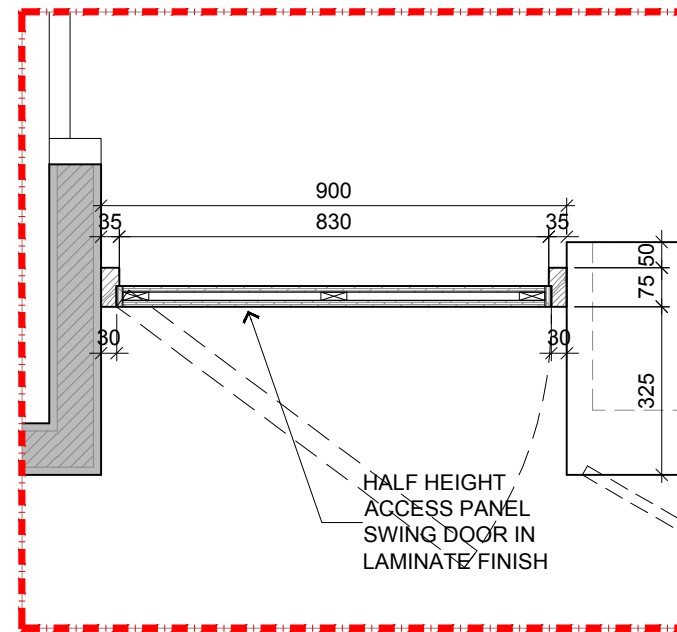


BLOCK A 2ND FLOOR - HR DEPARTMENT
RECEPTION COUNTER PLAN DETAIL

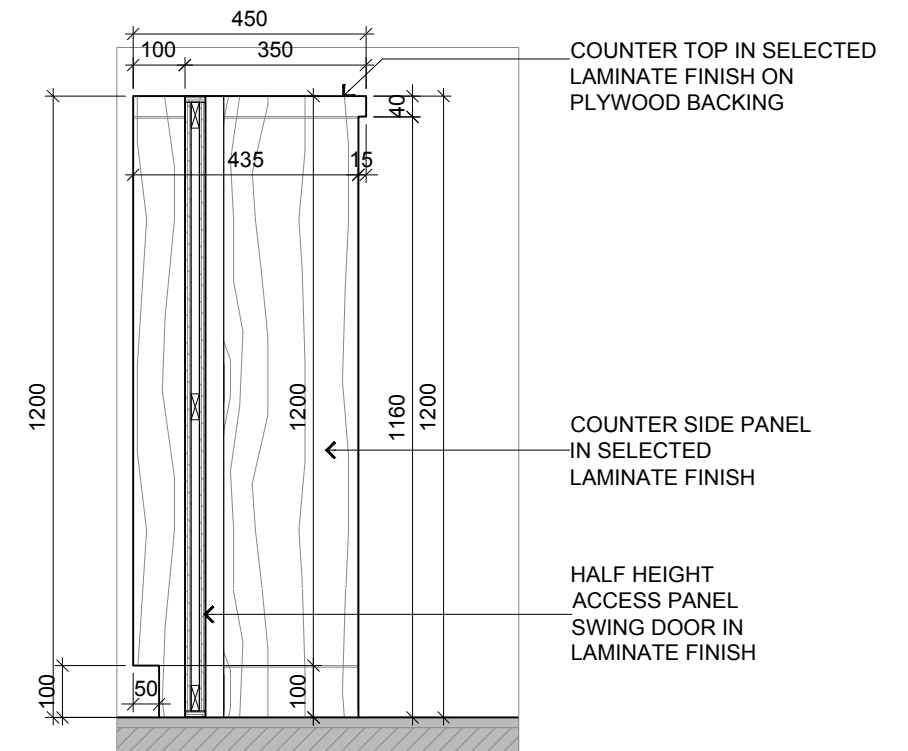
1

SCALE

1:25



DETAIL A

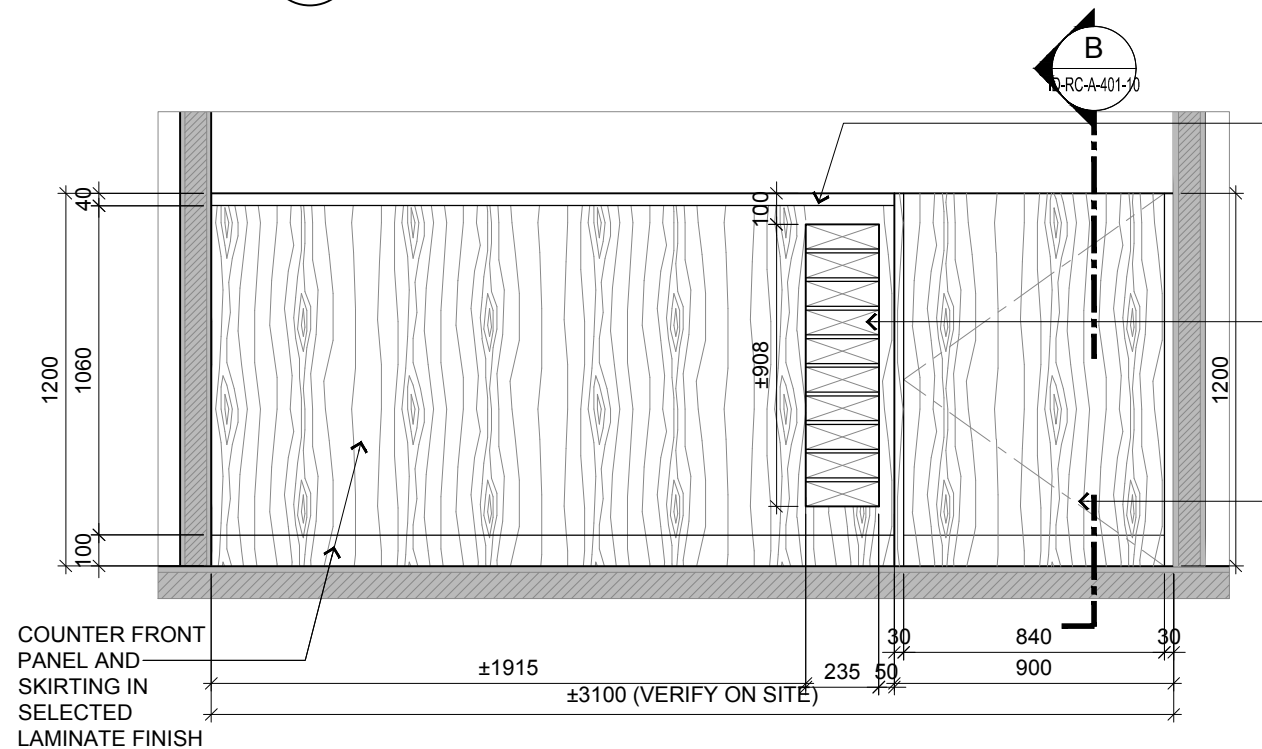


BLOCK A 2ND FLOOR - HR DEPARTMENT
RECEPTION COUNTER DETAIL B

-

SCALE

1:15



BLOCK A 2ND FLOOR - HR DEPARTMENT
RECEPTION COUNTER ELEVATION

2

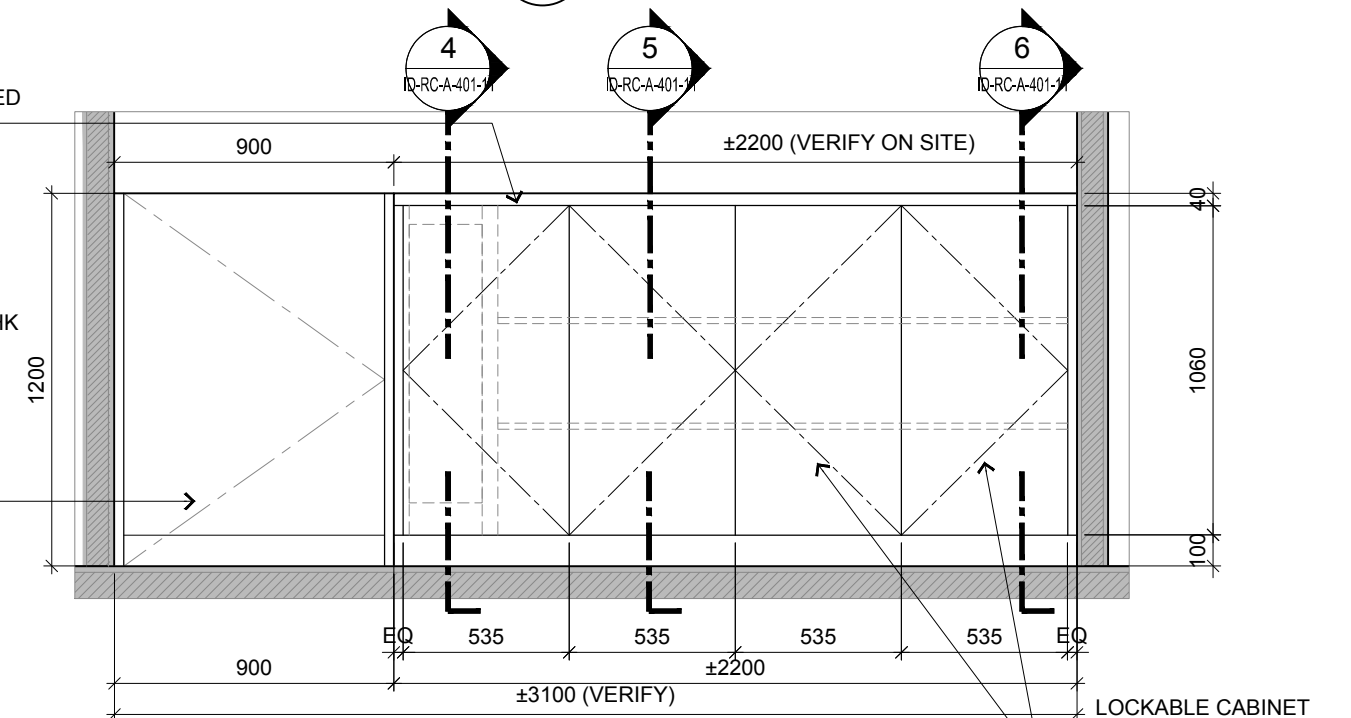
SCALE

1:25

COUNTER TOP IN SELECTED LAMINATE FINISH ON PLYWOOD BACKING

FIXED PIGEON SHELVES FOR A4 PAPER IN 12MM THK PLASTIC LAMINATE FINISH TO MATCH THE FRONT LAMINATE FINISH

HALF HEIGHT ACCESS PANEL SWING DOOR IN LAMINATE FINISH



BLOCK A 2ND FLOOR - HR DEPARTMENT
RECEPTION COUNTER ELEVATION

3

SCALE

1:25

RC-05



ARCHITECTURE GROUP-STUDIO A
CPG CONSULTANTS PTE LTD
1 GATEWAY DRIVE #25-01
WESTGATE TOWER, SINGAPORE 608531
TEL: 6357 4888 FAX: 6357 4188

©2014, CPG Consultants Pte Ltd reserves all rights to these drawings, designs and/or any other data contained herein. No part of the said drawings, designs and/or other data may be reproduced, modified, transmitted or used in any form or by any means for any purpose without the prior written consent of CPG Consultants Pte Ltd other than the sole purpose for which such drawings, designs and/or other data are provided to licensed users on such terms as CPG Consultants Pte Ltd may prescribe.

Job Title

INTERIOR DESIGN WORKS FOR PROPOSED KDU PENANG
@ BATU KAWAN, PENANG MALAYSIA

Drawing Title

RECEPTION COUNTER DETAILS
BLOCK A 2ND FLOOR - HR DEPARTMENT

Senior Vice President

TAN PHENG CHEE

Vice President

PATRICK TAN

Principal Architectural Associate

-

Architectural Associate

-

Principal Interior Designer

BETH SONCUYA

TENDER DRAWING

Drawn By

TEAM

Date: JULY 16

Checked By

BETH

Date: JULY 16

Project Code :

Drawing No. :

REV. Scale : AS SHOWN

P5679

ID-RC-A-401-10

CAD Ref.