

BLOCK A 3RD & 4TH FLR - SEST & SASS ADMIN
RECEPTION COUNTER SECTION

6

SCALE 1:10

LEDGE TOP AND
FRONT PANEL IN
SOLID SURFACE
FINISH WITH
PLYWOOD BACKING

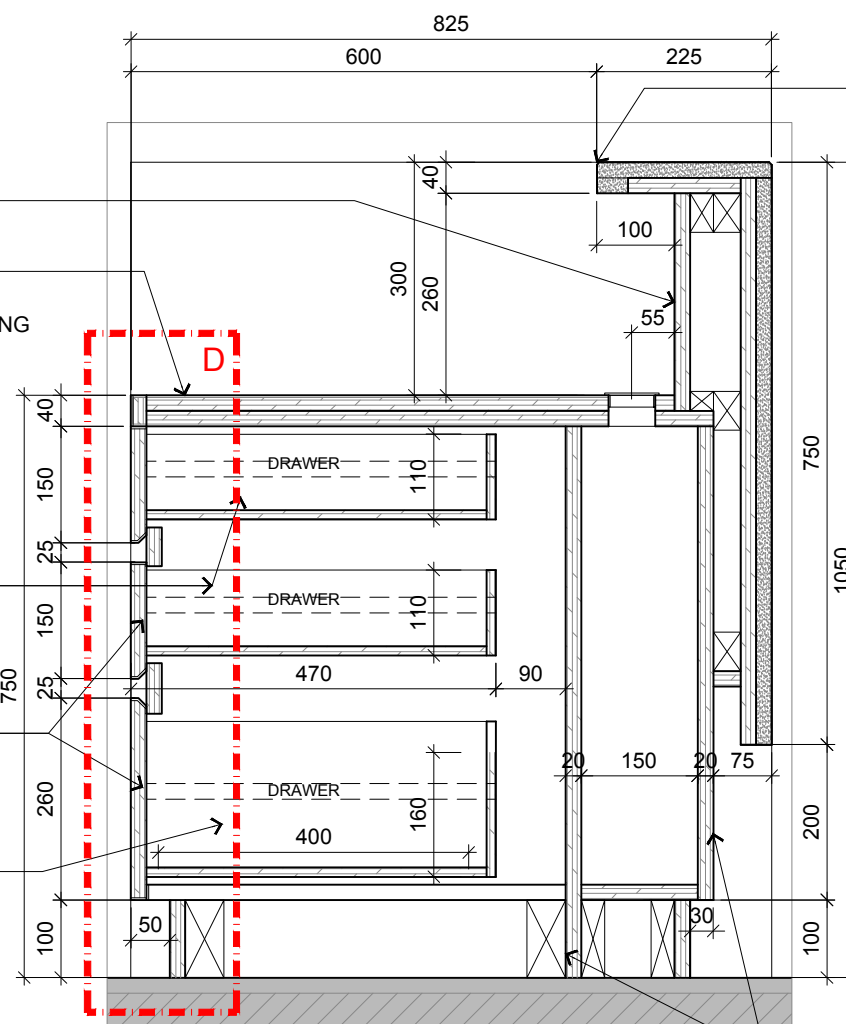
LAMINATE FINISH
COUNTER TOP IN
LAMINATE FINISH
WITH PVC EDGING
ON PLYWOOD BACKING

DRAWER INTERIOR
IN WHITE POLYKEM
LAMINATE FINISH

DRAWER FACE IN
LAMINATE FINISH
W/ PVC EDGING
(PROVIDE LOCKSET)

DRAWER GUIDE /
TRACK (USE
'HAFELE' OR ANY
EQUAL)

FRONT PANEL AND
SKIRTING IN SELECTED
LAMINATE FINISH



BLOCK A 3RD & 4TH FLR - SEST & SASS ADMIN
RECEPTION COUNTER SECTION

7

SCALE 1:10

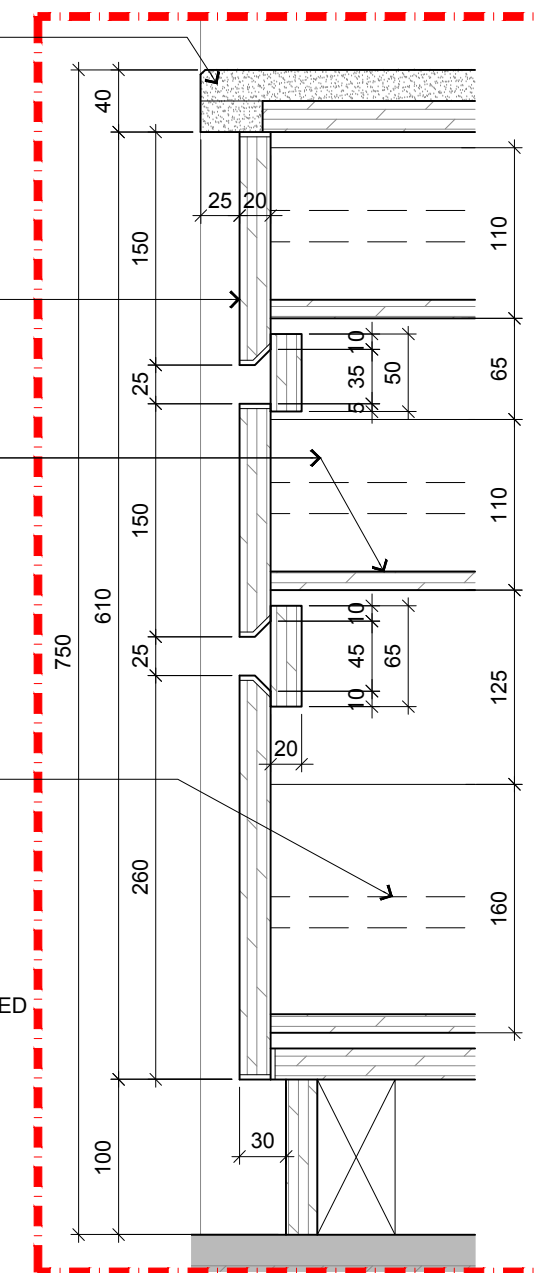
LEDGE TOP AND
FRONT PANEL IN
SOLID SURFACE
FINISH WITH
PLYWOOD BACKING

DRAWER FACE IN
LAMINATE FINISH
W/ PVC EDGING
(PROVIDE LOCKSET)

DRAWER INTERIOR
IN WHITE POLYKEM
LAMINATE FINISH

DRAWER GUIDE /
TRACK (USE
'HAFELE' OR ANY
EQUAL)

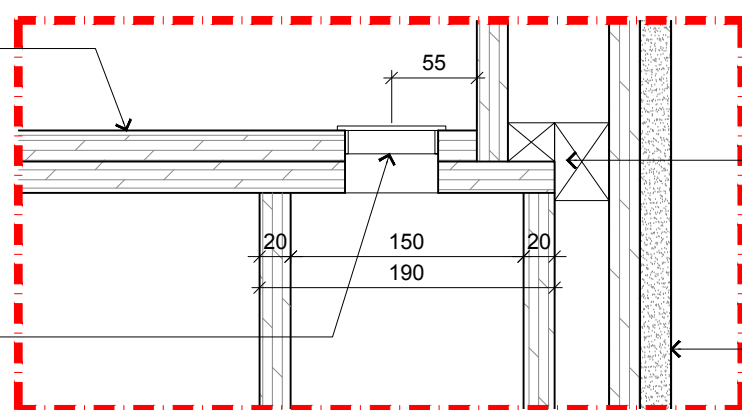
FRONT PANEL AND
SKIRTING IN SELECTED
LAMINATE FINISH



DETAIL D

COUNTER TOP IN
LAMINATE FINISH
WITH PVC EDGING
ON PLYWOOD
BACKING

60MM Ø
GROMMET HOLE
FOR CABLE
MANAGEMENT



DETAIL C

WOOD NAILER
AS REQUIRED

FRONT PANEL IN
SOLID SURFACE
FINISH WITH
PLYWOOD BACKING

RC-06



ARCHITECTURE GROUP-STUDIO A
CPG CONSULTANTS PTE LTD
1 GATEWAY DRIVE #25-01
WESTGATE TOWER, SINGAPORE 608531
TEL: 6357 4888 FAX: 6357 4188

©2014, CPG Consultants Pte Ltd reserves all rights to these drawings, designs and/or any other data contained herein. No part of the said drawings, designs and/or other data may be reproduced, modified, transmitted or used in any form or by any means for any purpose without the prior written consent of CPG Consultants Pte Ltd other than the sole purpose for which such drawings, designs and/or other data are provided to licensed users on such terms as CPG Consultants Pte Ltd may prescribe.

Job Title

INTERIOR DESIGN WORKS FOR PROPOSED KDU PENANG
@ BATU KAWAN, PENANG MALAYSIA

Drawing Title

RECEPTION COUNTER DETAILS
BLOCK A 3RD & 4TH FLOOR - SEST & SASS ADMIN OFFICE

Senior Vice President

TAN PHENG CHEE

Vice President

PATRICK TAN

Principal Architectural Associate

-

Architectural Associate

-

Principal Interior Designer

BETH SONCUYA

TENDER DRAWING

Drawn By	TEAM	Date:	JULY 16
Checked By	BETH	Date:	JULY 16
Project Code :	Drawing No. :	REV.	Scale : AS SHOWN
P5679	ID-RC-A-401-15	-	CAD Ref.