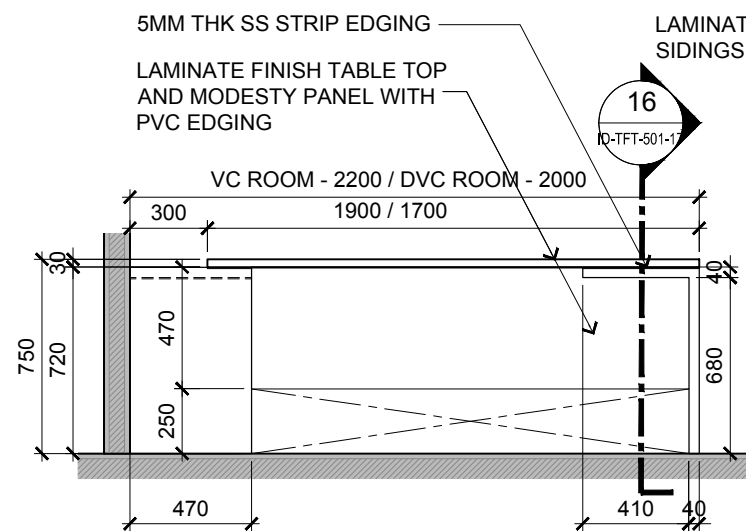


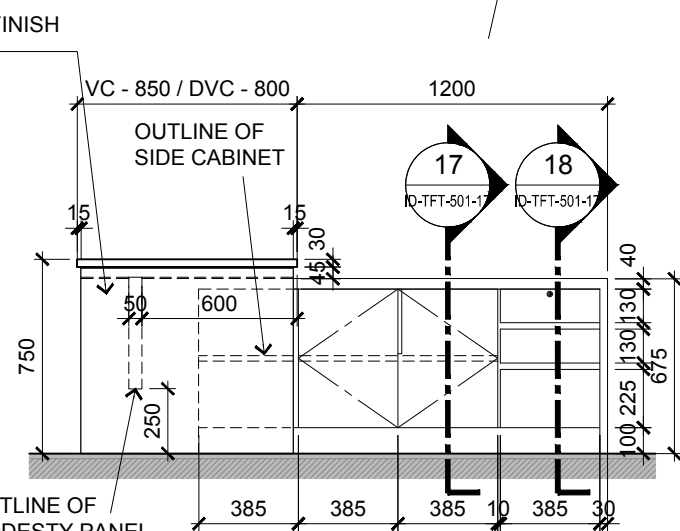
BLOCK A 2ND FLOOR - VICE CHANCELLOR
LOW CABINET PLAN

SCALE 1:30



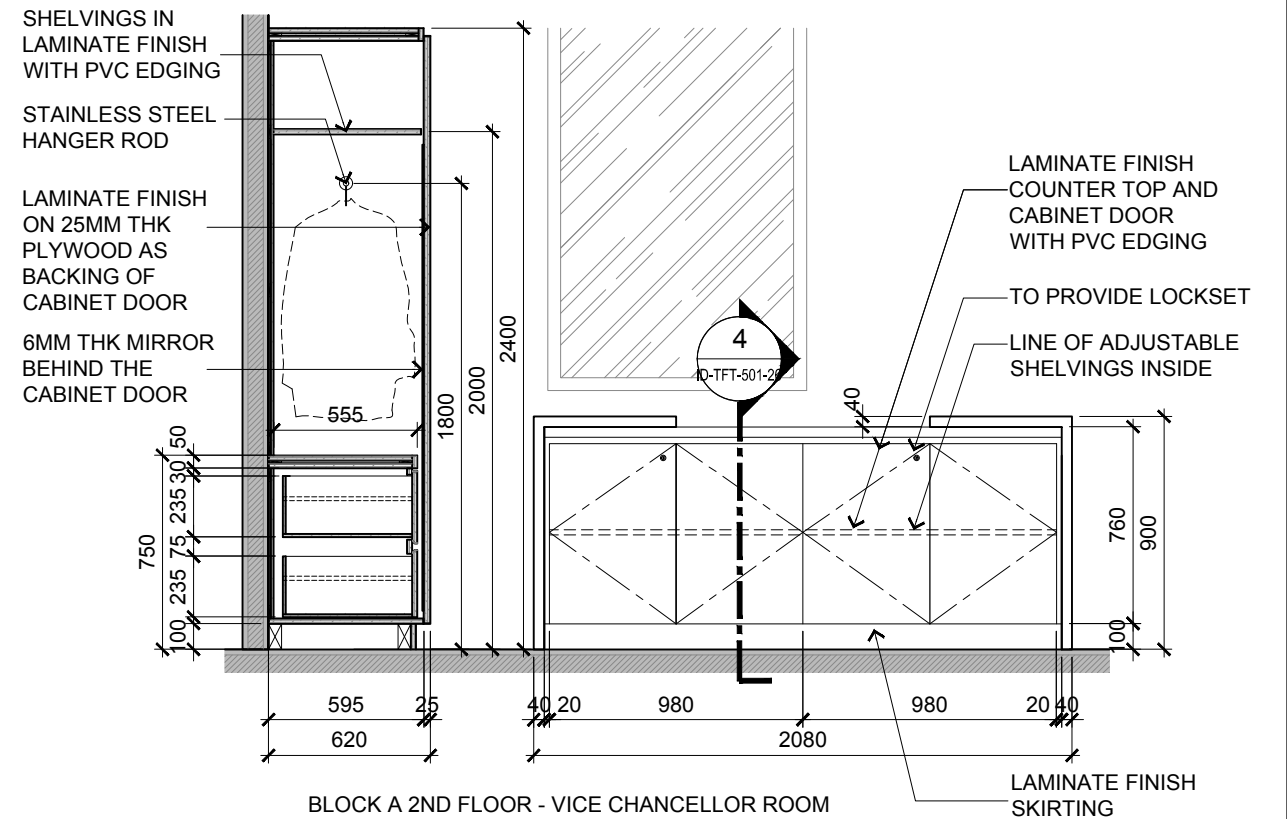
BLOCK A 2ND FLOOR - VC / DVC ROOM
WORK DESK ELEVATION

SCALE 1:30



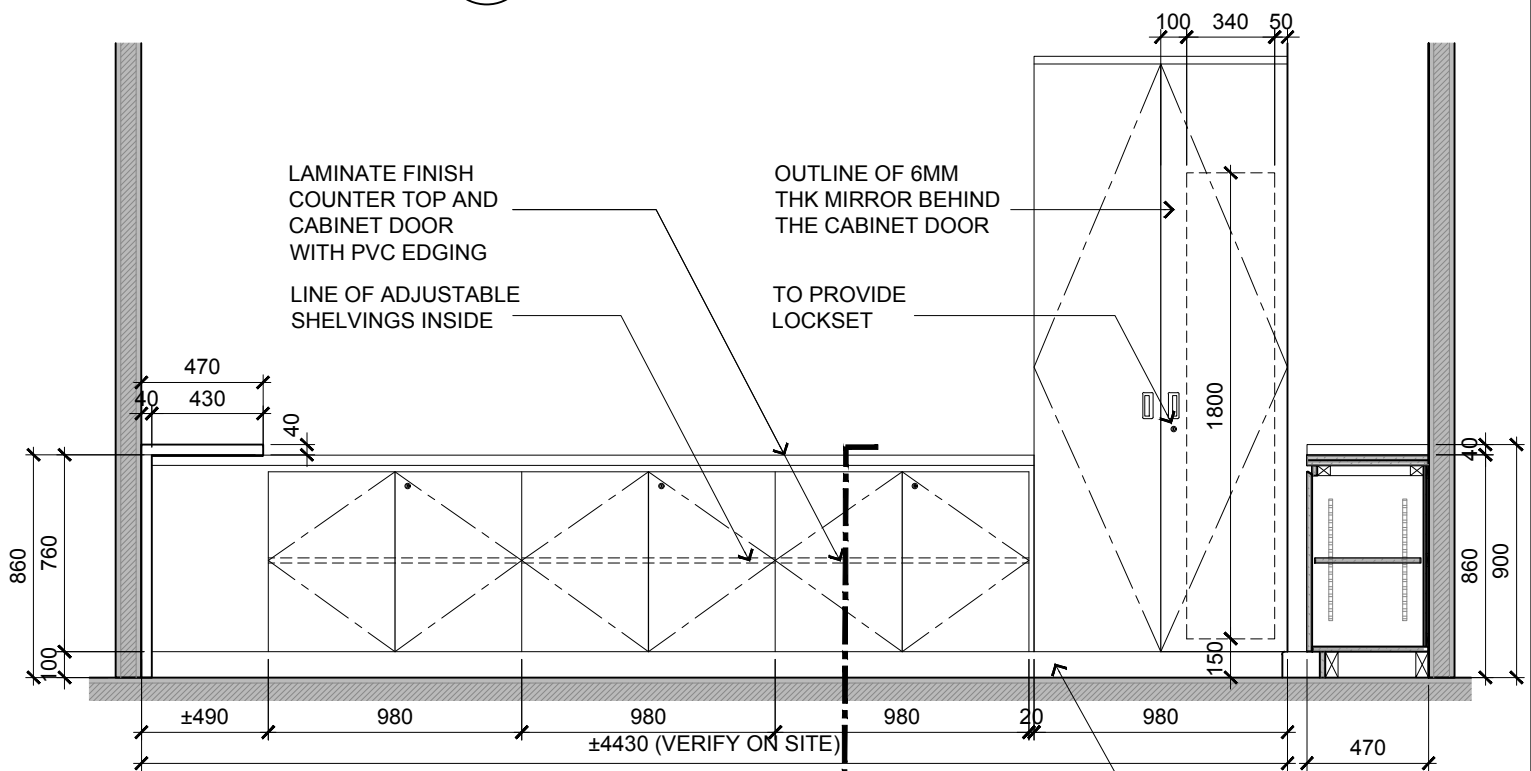
BLOCK A 2ND FLOOR - VC / DVC ROOM
WORK DESK ELEVATION

SCALE 1:30



BLOCK A 2ND FLOOR - VICE CHANCELLOR ROOM
LOW CABINET ELEVATION

SCALE 1:30



BLOCK A 2ND FLOOR - VICE CHANCELLOR
LOW CABINET ELEVATION

SCALE 1:30

TENDER DRAWING



ARCHITECTURE GROUP-STUDIO A
CPG CONSULTANTS PTE LTD
1 GATEWAY DRIVE #25-01
WESTGATE TOWER, SINGAPORE 608531
TEL: 6357 4888 FAX: 6357 4188

©2014, CPG Consultants Pte Ltd reserves all rights to these drawings, designs and/or any other data contained herein. No part of the said drawings, designs and/or other data may be reproduced, modified, transmitted or used in any form or by any means for any purpose without the prior written consent of CPG Consultants Pte Ltd other than the sole purpose for which such drawings, designs and/or other data are provided to licensed users on such terms as CPG Consultants Pte Ltd may prescribe.

Job Title

PROPOSED KDU PENANG @ BATU KAWAN,
PENANG MALAYSIA

Drawing Title

VC/DVC ROOM WORK DESK & CABINET DETAILS
BLOCK A 2ND FLOOR

Senior Vice President

TAN PHENG CHEE

Vice President

PATRICK TAN

Principal Architectural Associate

-

Architectural Associate

-

Principal Interior Designer

BETH SONCUYA

Drawn By

TEAM

Date: JULY 16

Checked By

BETH

Date: JULY 16

Project Code :

P5679

Drawing No. :

ID-TFT-A-501-16

REV. Scale : 1:30

CAD Ref.