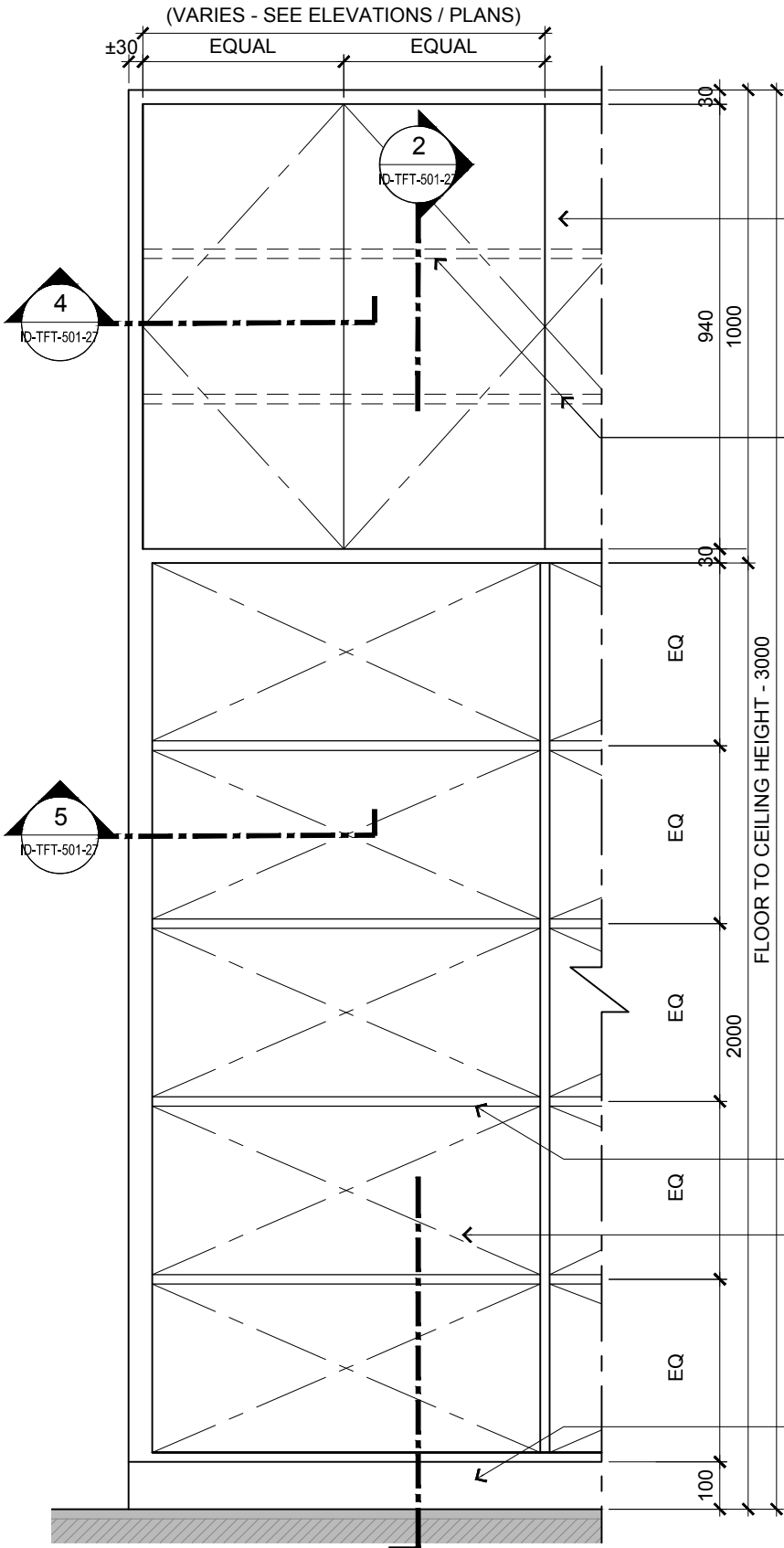


TC6 - CABINET WITH OPEN SHELVING



1 CABINET WITH OPEN SHELVING
BLOW UP ELEVATION DETAILS
SCALE 1:15

LAMINATE FINISH
CABINET DOOR
WITH PVC EDGING

'AA' TRACK FOR
ADJUSTABLE SHELF

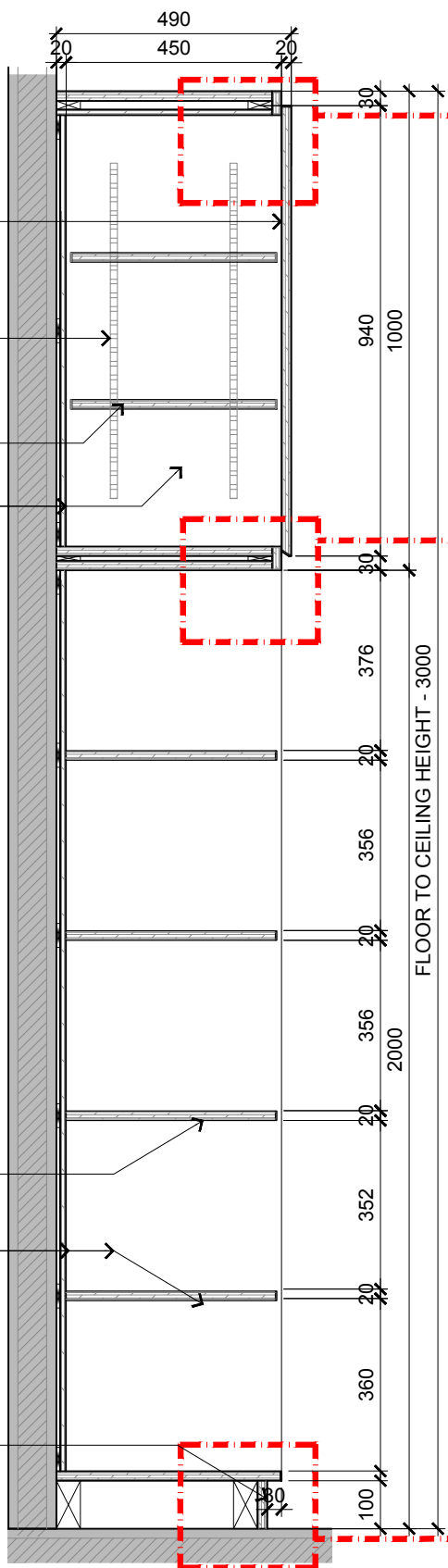
LINE OF ADJUSTABLE
SHELVINGS INSIDE

POLYKEM LAMINATE FOR
CABINET INTERIOR WITH
PVC EDGING

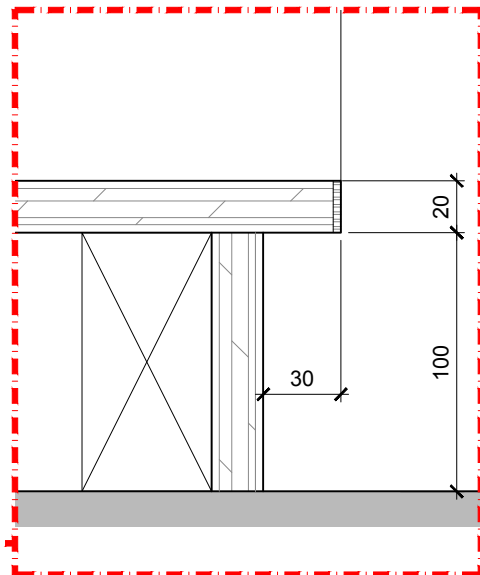
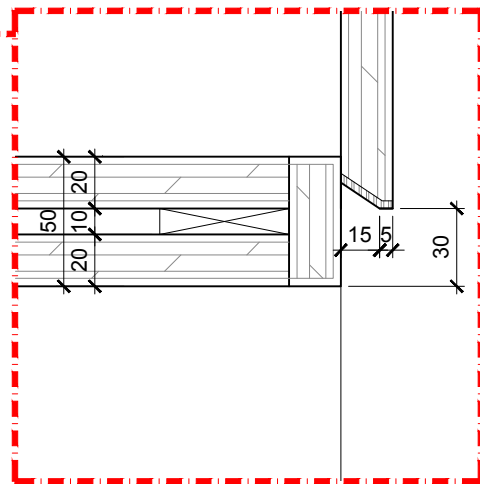
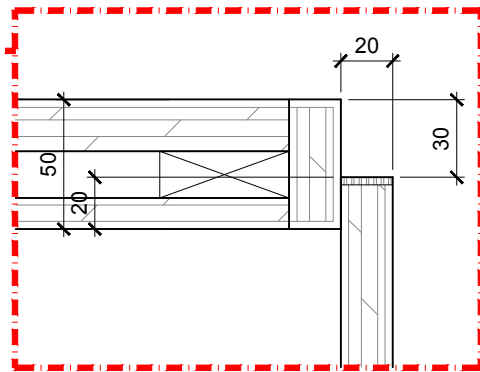
LINE OF FIXED
SHELVINGS INSIDE
(TO FIT ARCH FILE)

LAMINATE FINISH
OPEN SHELVING
WITH PVC EDGING

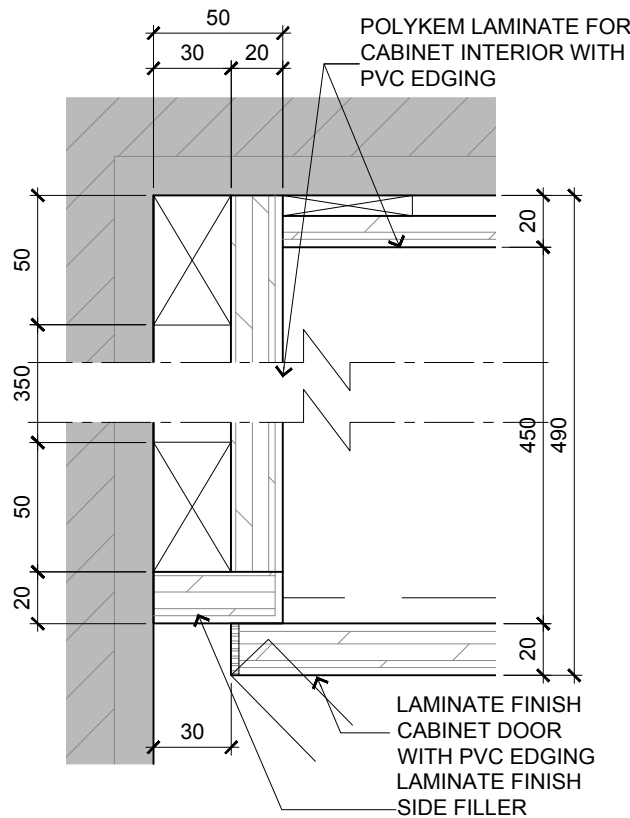
LAMINATE FINISH
SKIRTING



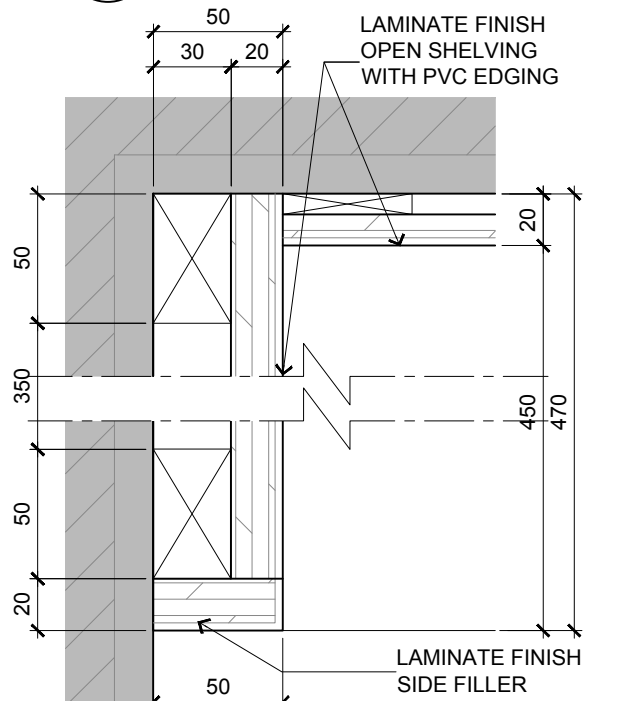
2 CABINET WITH OPEN SHELVING
BLOW UP SECTION DETAILS
SCALE 1:15



3 CABINET WITH OPEN SHELVING
SPOT DETAILS
SCALE 1:3



4 TYPICAL FULL HEIGHT CABINET
SPOT DETAILS
SCALE 1:3



5 CABINET WITH OPEN SHELVING
SPOT DETAILS
SCALE 1:3



ARCHITECTURE GROUP-STUDIO A
CPG CONSULTANTS PTE LTD
1 GATEWAY DRIVE #25-01
WESTGATE TOWER, SINGAPORE 608531
TEL: 6357 4888 FAX: 6357 4188

©2014, CPG Consultants Pte Ltd reserves all rights to these drawings, designs and/or any other data contained herein. No part of the said drawings, designs and/or other data may be reproduced, modified, transmitted or used in any form or by any means for any purpose without the prior written consent of CPG Consultants Pte Ltd other than the sole purpose for which such drawings, designs and/or other data are provided to licensed users on such terms as CPG Consultants Pte Ltd may prescribe.

Job Title
PROPOSED KDU PENANG @ BATU KAWAN,
PENANG MALAYSIA

Drawing Title
TC6 - CABINET WITH OPEN SHELVING DETAILS
BLOCK A

Senior Vice President	TAN PHENG CHEE
Vice President	PATRICK TAN
Principal Architectural Associate	-
Architectural Associate	-
Principal Interior Designer	BETH SONCUYA

TENDER DRAWING				
Drawn By	TEAM		Date:JULY 16	
Checked By	BETH		Date:JULY 16	
Project Code :	Drawing No. :	REV.	Scale : 1:15	
P5679	ID-TFT-501-27	-	CAD Ref.	