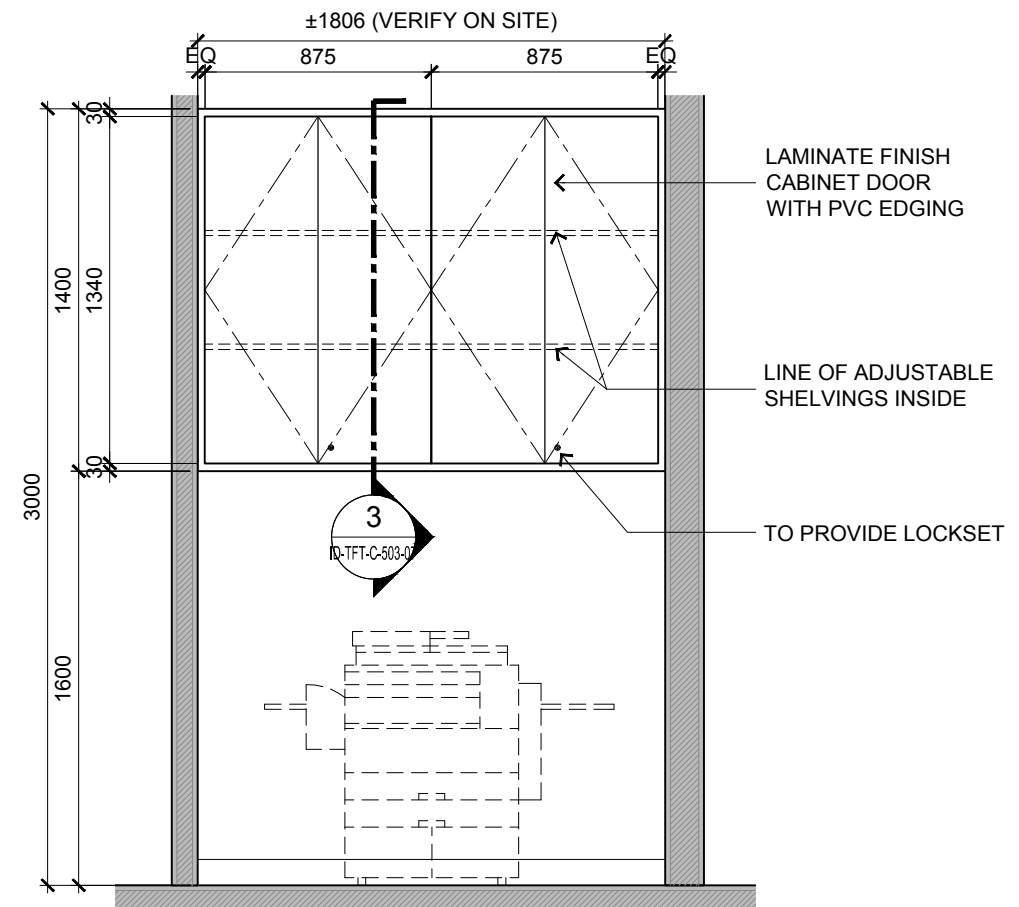


1 BLOCK C GROUND FLOOR - MAINTENANCE DEPARTMENT  
TOP HUNG CABINET PLAN  
SCALE 1:30



2 BLOCK C GROUND FLOOR - MAINTENANCE DEPARTMENT  
TOP HUNG CABINET ELEVATION  
SCALE 1:30



ARCHITECTURE GROUP-STUDIO A  
**CPG CONSULTANTS PTE LTD**  
1 GATEWAY DRIVE #25-01  
WESTGATE TOWER, SINGAPORE 608531  
TEL: 6357 4888 FAX: 6357 4188

©2014, CPG Consultants Pte Ltd reserves all rights to these drawings, designs and/or any other data contained herein. No part of the said drawings, designs and/or other data may be reproduced, modified, transmitted or used in any form or by any means for any purpose without the prior written consent of CPG Consultants Pte Ltd other than the sole purpose for which such drawings, designs and/or other data are provided to licensed users on such terms as CPG Consultants Pte Ltd may prescribe.

Job Title

PROPOSED KDU PENANG @ BATU KAWAN,  
PENANG MALAYSIA

Drawing Title

**CABINET/ SHELVING DETAILS**  
BLOCK C GROUND FLOOR

Senior Vice President

TAN PHENG CHEE

Vice President

PATRICK TAN

Principal Architectural Associate

-

Architectural Associate

-

Principal Interior Designer

BETH SONCUYA

## TENDER DRAWING

Drawn By	TEAM	Date:	JULY 16
Checked By	BETH	Date:	JULY 16
Project Code :	Drawing No. :	REV.	Scale : 1:30
P5679	ID-TFT-C-503-01	-	CAD Ref.