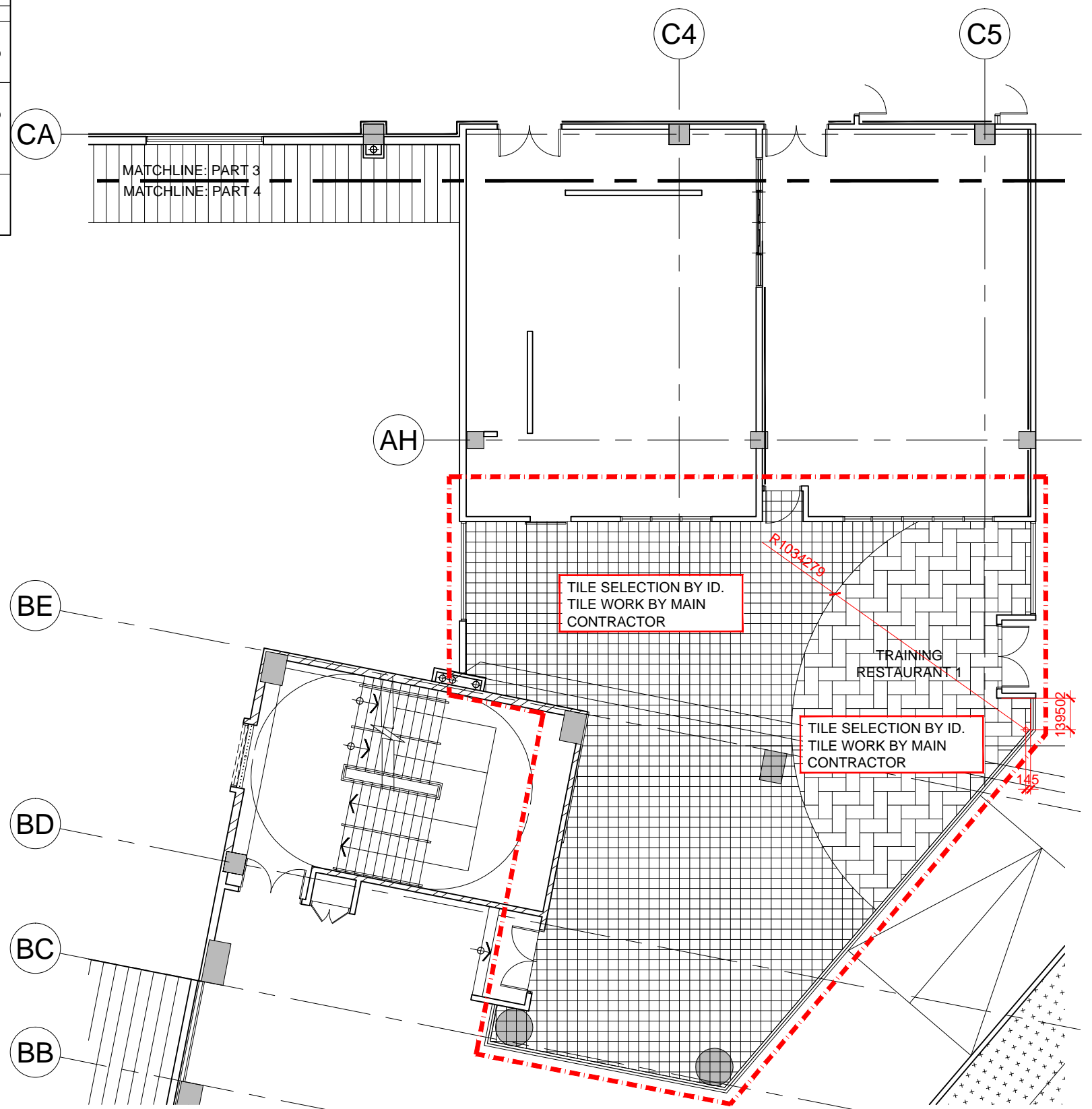




KEYPLAN

1:2500

LEGEND - FLOOR FINISHES BY ID (UNLESS OTHERWISE SPECIFIED)					
SYMBOL	CODE	DESCRIPTION	SYMBOL	CODE	DESCRIPTION
	CP-T1 (GENERAL)	CARPET FLOOR TILES INCLUDING CEMENT RENDER FINISHED TO FFL SPECIFIED		CP1-T1 (GENERAL)	BROADLOOM CARPET INCLUDING CEMENT RENDER FINISHED TO FFL SPECIFIED
	CP-T2 (RED)			CP1-T2 (RED)	
	CP-T3 (GREEN)			HVL-T1 (GENERAL)	VINYL SHEET INCLUDING CEMENT RENDER FINISHED TO FFL SPECIFIED
	CP-T4 (BLUE)			HVL-T2 (TIMBER)	
	CP-T5 (YELLOW)			HVL-T3 (GREY)	
	CP-T6 (PINK)			BD	300MM-1500MM X 70MM(W) X 11MM(T) TIMBER PARQUET FLOORING
	CP-T7 (ORANGE)				



1 BLOCK C 1ST FLOOR
FLOOR FINISHES PLAN-PART 4
SCALE 1:150



ARCHITECTURE GROUP-STUDIO A
CPG CONSULTANTS PTE LTD
1 GATEWAY DRIVE #25-01
WESTGATE TOWER, SINGAPORE 608531
TEL: 6357 4888 FAX: 6357 4188

©2014, CPG Consultants Pte Ltd reserves all rights to these drawings, designs and/or any other data contained herein. No part of the said drawings, designs and/or other data may be reproduced, modified, transmitted or used in any form or by any means for any purpose without the prior written consent of CPG Consultants Pte Ltd other than the sole purpose for which such drawings, designs and/or other data are provided to licensed users on such terms as CPG Consultants Pte Ltd may prescribe.

Job Title
PROPOSED KDU PENANG @ BATU KAWAN,
PENANG MALAYSIA

Drawing Title
FLOOR FINISHES PLAN-PART 4
BLOCK C 1ST FLOOR

Senior Vice President	TAN PHENG CHEE
Vice President	PATRICK TAN
Principal Architectural Associate	-
Architectural Associate	-
Principal Interior Designer	BETH SONCUYA

TENDER DRAWING					
Drawn By	TEAM		Date:	JULY 16	
Checked By	BETH		Date:	JULY 16	
Project Code :	Drawing No. :	REV.	Scale :	1:150	
P5679	ID-FF-C-703-07	-	CAD Ref.		