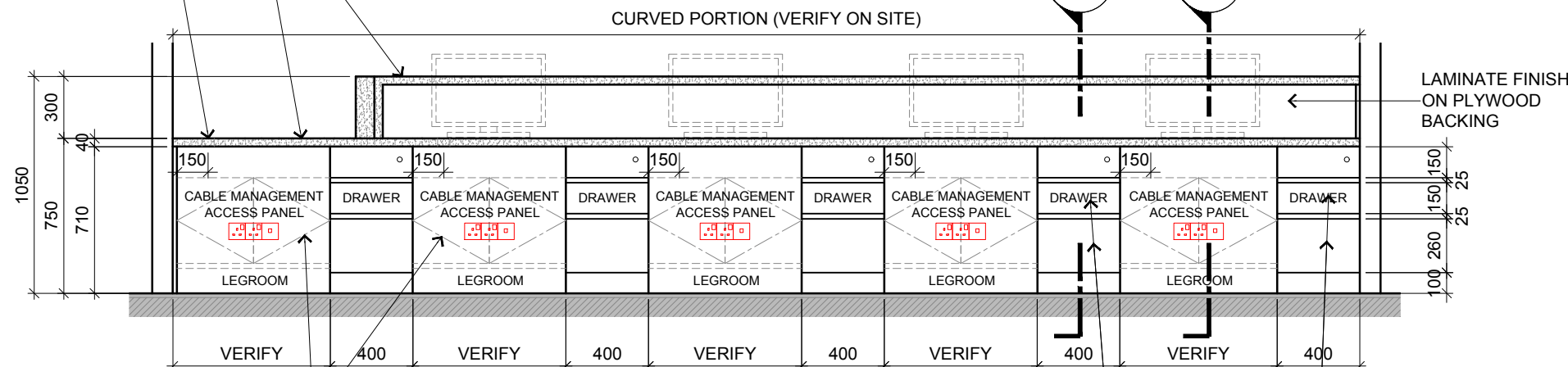


15 BLOCK B GROUND FLOOR - LIBRARY
RECEPTION COUNTER ELEVATION
SCALE 1:30

COUNTER TOP AND FRONT FACE IN SOLID SURFACE FINISH
GROMET HOLE SETTING OUT

LAMINATE FINISH ON PLYWOOD BACKING

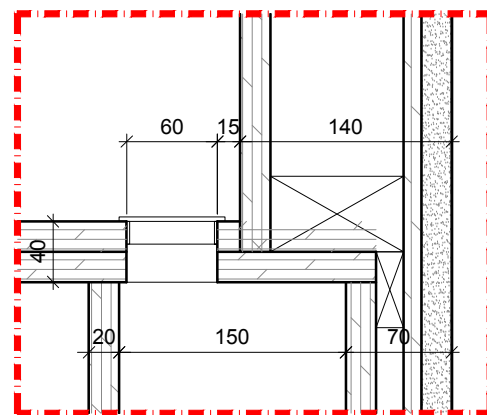
LAMINATE FINISH CABLE MANAGEMENT ACCESS PANEL ON PLYWOOD BACKING



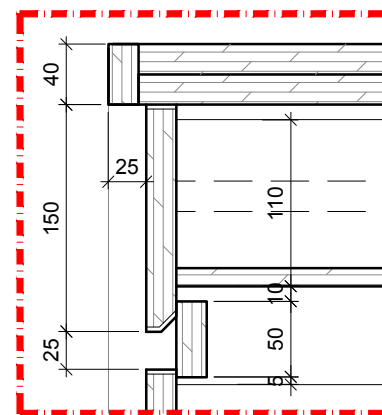
16 BLOCK B GROUND FLOOR - LIBRARY
RECEPTION COUNTER ELEVATION
SCALE 1:30

CABLE MANAGEMENT ACCESS PANEL IN LAMINATE FINISH

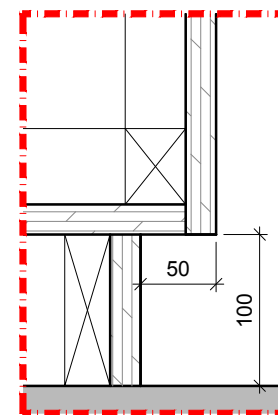
DRAWER FACE IN LAMINATE FINISH (WITH LOCKSET)



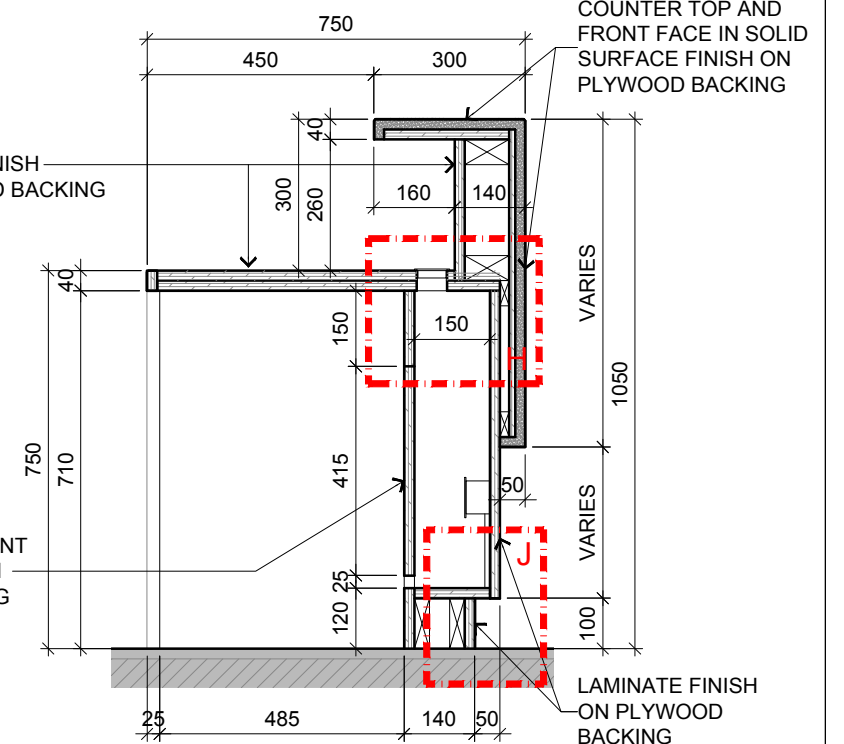
DETAIL H



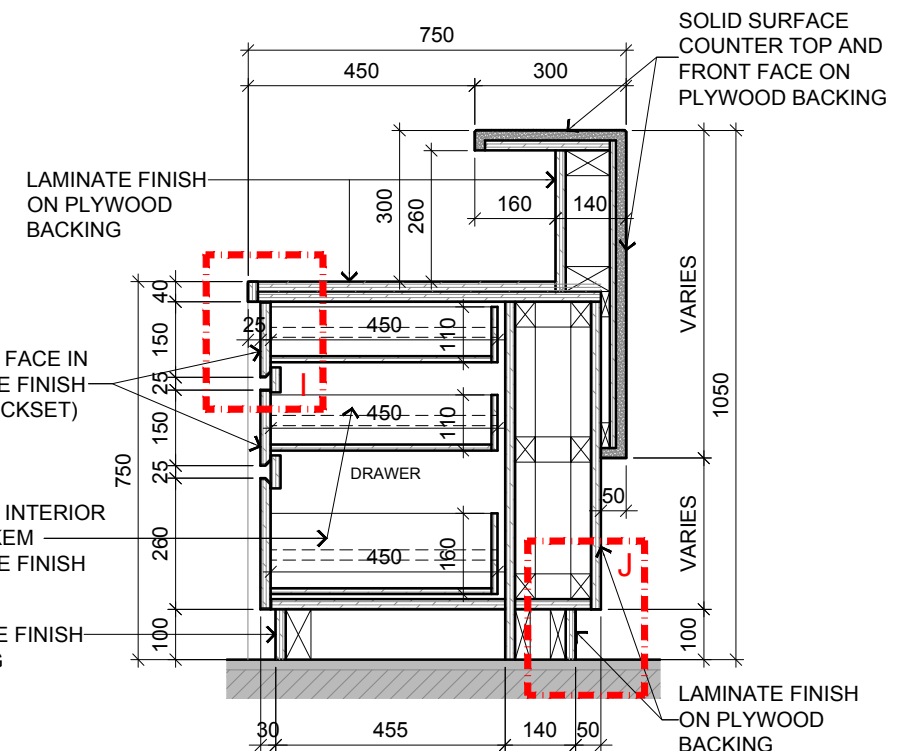
DETAIL I



DETAIL J



17 BLOCK B GROUND FLOOR - LIBRARY
RECEPTION COUNTER SECTION
SCALE 1:15



18 BLOCK B GROUND FLOOR - LIBRARY
RECEPTION COUNTER SECTION
SCALE 1:15

DRAWER FACE IN LAMINATE FINISH (WITH LOCKSET)

DRAWER INTERIOR IN POLYKEM LAMINATE FINISH

LAMINATE FINISH SKIRTING

TENDER DRAWING

RC-04



ARCHITECTURE GROUP-STUDIO A
CPG CONSULTANTS PTE LTD
1 GATEWAY DRIVE #25-01
WESTGATE TOWER, SINGAPORE 608531
TEL: 6357 4888 FAX: 6357 4188

©2014, CPG Consultants Pte Ltd reserves all rights to these drawings, designs and/or any other data contained herein. No part of the said drawings, designs and/or other data may be reproduced, modified, transmitted or used in any form or by any means for any purpose without the prior written consent of CPG Consultants Pte Ltd other than the sole purpose for which such drawings, designs and/or other data are provided to licensed users on such terms as CPG Consultants Pte Ltd may prescribe.

Job Title
INTERIOR DESIGN WORKS FOR PROPOSED KDU PENANG
@ BATU KAWAN, PENANG MALAYSIA

Drawing Title
RC-04 LIBRARY RECEPTION COUNTER DETAILS
BLOCK B GROUND FLOOR

Senior Vice President	TAN PHENG CHEE
Vice President	PATRICK TAN
Principal Interior Designer	BETH SONCUYA
Principal Architectural Associate	-
Architectural Associate	-

Drawn By	TEAM	Date: DEC 16
Checked By	BETH	Date: DEC 16
Project Code : P5679	Drawing No. : ID-RC-B-402-05	REV. : -
Scale : AS SHOWN		CAD Ref.