

1  
BLOCK C GROUND FLOOR - MAINTENANCE DEPT  
FULL HEIGHT & TOP-HUNG CABINET PLAN DETAILS  
SCALE 1:40

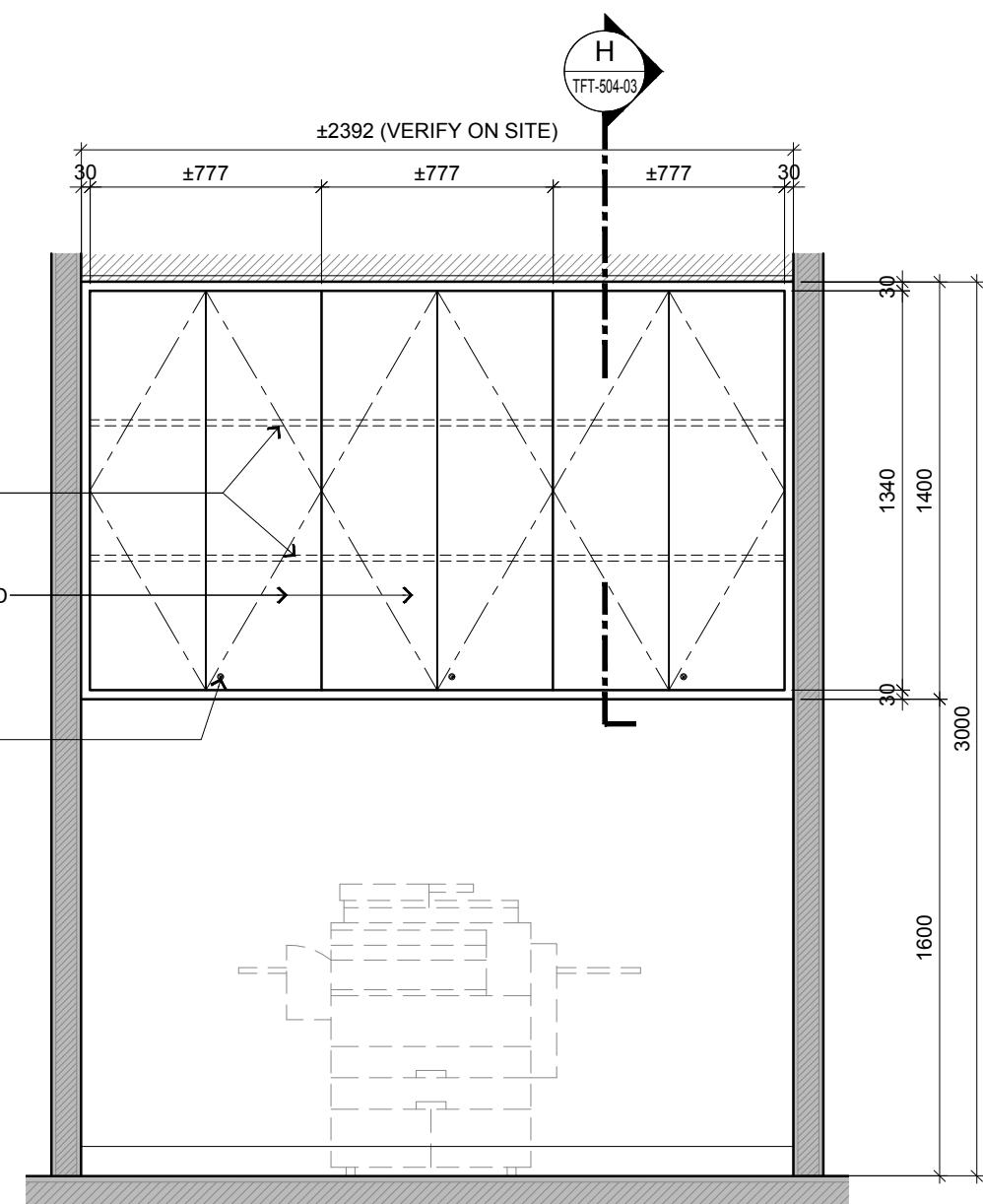
LINE OF ADJUSTABLE  
SHELVINGS INSIDE

LOCKABLE CABINET  
DOOR PANEL IN SELECTED  
LAMINATE FINISH WITH  
PVC EDGING

TO PROVIDE  
LOCKSET

LAMINATE FINISH  
CABINET DOOR  
WITH PVC EDGING

WHITE POLYKEM  
LAMINATE FINISH  
FOR CABINET INTERIOR  
AND SHELVINGS  
WITH PVC EDGING



2  
BLOCK C GROUND FLOOR - MAINTENANCE DEPT  
TOP-HUNG CABINET ELEVATION DETAILS  
SCALE 1:25



ARCHITECTURE GROUP-STUDIO A  
CPG CONSULTANTS PTE LTD  
1 GATEWAY DRIVE #25-01  
WESTGATE TOWER, SINGAPORE 608531  
TEL: 6357 4888 FAX: 6357 4188

©2014, CPG Consultants Pte Ltd reserves all rights to these drawings, designs and/or any other data contained herein. No part of the said drawings, designs and/or other data may be reproduced, modified, transmitted or used in any form or by any means for any purpose without the prior written consent of CPG Consultants Pte Ltd other than the sole purpose for which such drawings, designs and/or other data are provided to licensed users on such terms as CPG Consultants Pte Ltd may prescribe.

Job Title  
INTERIOR DESIGN WORKS FOR PROPOSED KDU PENANG  
@ BATU KAWAN, PENANG MALAYSIA

Drawing Title  
FULL HEIGHT & TOP HUNG CABINET TYPICAL FITMENT  
DETAILS, BLOCK C GROUND FLOOR

Senior Vice President	TAN PHENG CHEE
Vice President	PATRICK TAN
Principal Interior Designer	BETH SONCUYA
Principal Architectural Associate	-
Architectural Associate	-

TENDER DRAWING					
Drawn By	TEAM		Date:DEC 16		
Checked By	BETH		Date:DEC 16		
Project Code :	Drawing No. :	REV.	Scale : AS SHOWN		
P5679	ID-TFT-C-503-01	-	CAD Ref.		