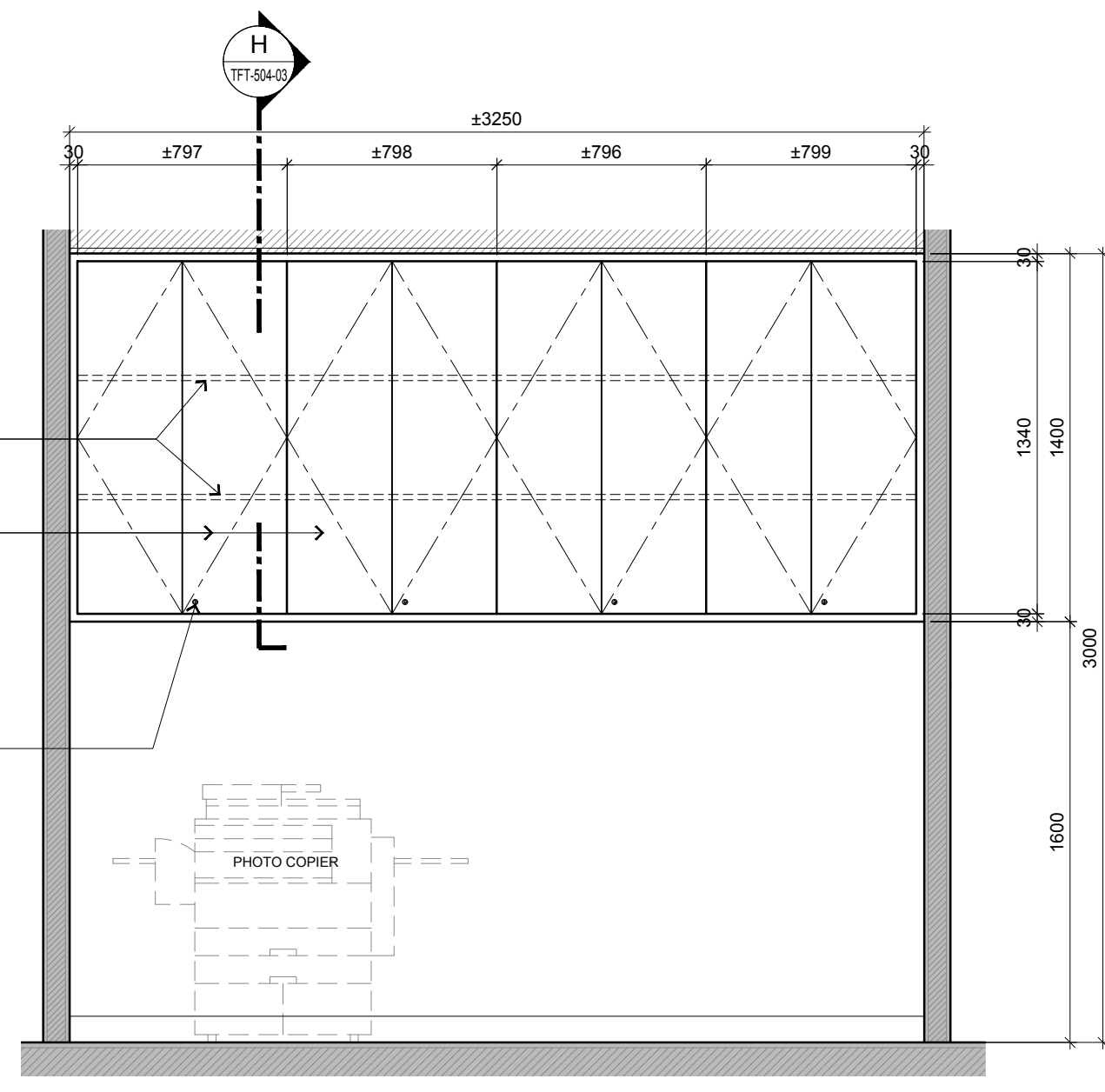


BLOCK A GROUND FLOOR - BURSARY + STORAGE
5 FULL HEIGHT CABINET ELEVATION DETAILS
 SCALE 1:25



BLOCK A GROUND FLOOR - AUTOMATION ROOM
6 TOP HUNG CABINET ELEVATION DETAILS
 SCALE 1:25

TENDER DRAWING



ARCHITECTURE GROUP-STUDIO A
CPG CONSULTANTS PTE LTD
 1 GATEWAY DRIVE #25-01
 WESTGATE TOWER, SINGAPORE 608531
 TEL: 6357 4888 FAX: 6357 4188

©2014, CPG Consultants Pte Ltd reserves all rights to these drawings, designs and/or any other data contained herein. No part of the said drawings, designs and/or other data may be reproduced, modified, transmitted or used in any form or by any means for any purpose without the prior written consent of CPG Consultants Pte Ltd other than the sole purpose for which such drawings, designs and/or other data are provided to licensed users on such terms as CPG Consultants Pte Ltd may prescribe.

Job Title	Senior Vice President
INTERIOR DESIGN WORKS FOR PROPOSED KDU PENANG @ BATU KAWAN, PENANG MALAYSIA	TAN PHENG CHEE
Drawing Title	Vice President
FULL HEIGHT & TOP HUNG CABINET TYPICAL FITMENT DETAILS, BLOCK A GROUND FLOOR	PATRICK TAN
	Principal Interior Designer
	BETH SONCUYA
	Principal Architectural Associate
	-
	Architectural Associate
	-

Senior Vice President	TAN PHENG CHEE
Vice President	PATRICK TAN
Principal Interior Designer	BETH SONCUYA
Principal Architectural Associate	-
Architectural Associate	-

Drawn By	TEAM	Date:DEC 16
Checked By	BETH	Date:DEC 16
Project Code : P5679	Drawing No. : ID-TFT-A-501-05	REV. -
		Scale : 1:25
		CAD Ref.