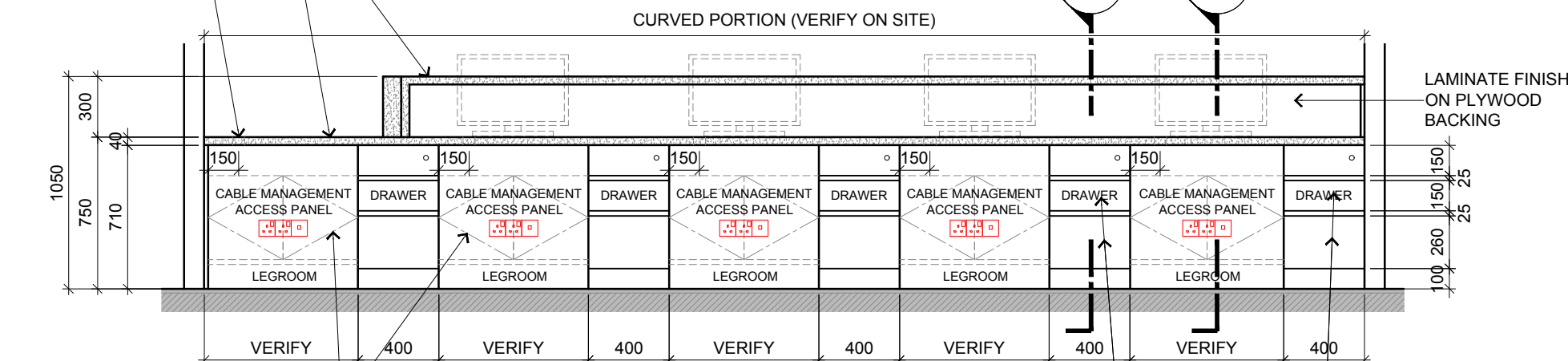


15 BLOCK B GROUND FLOOR - LIBRARY  
RECEPTION COUNTER ELEVATION  
SCALE 1:30

COUNTER TOP AND FRONT FACE IN SOLID SURFACE FINISH

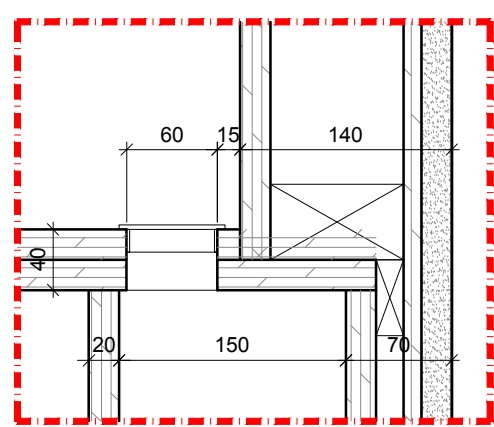
GROMET HOLE SETTING OUT



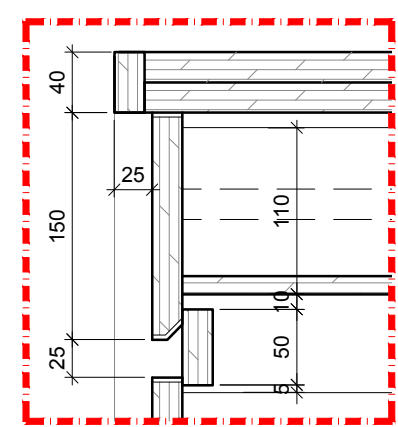
16 BLOCK B GROUND FLOOR - LIBRARY  
RECEPTION COUNTER ELEVATION  
SCALE 1:30

CABLE MANAGEMENT ACCESS PANEL IN LAMINATE FINISH

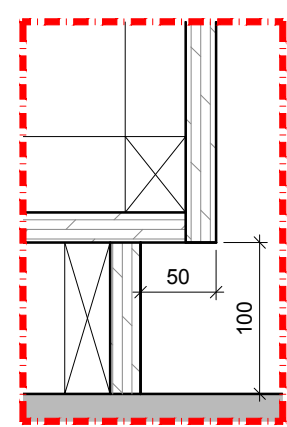
DRAWER FACE IN LAMINATE FINISH (WITH LOCKSET)



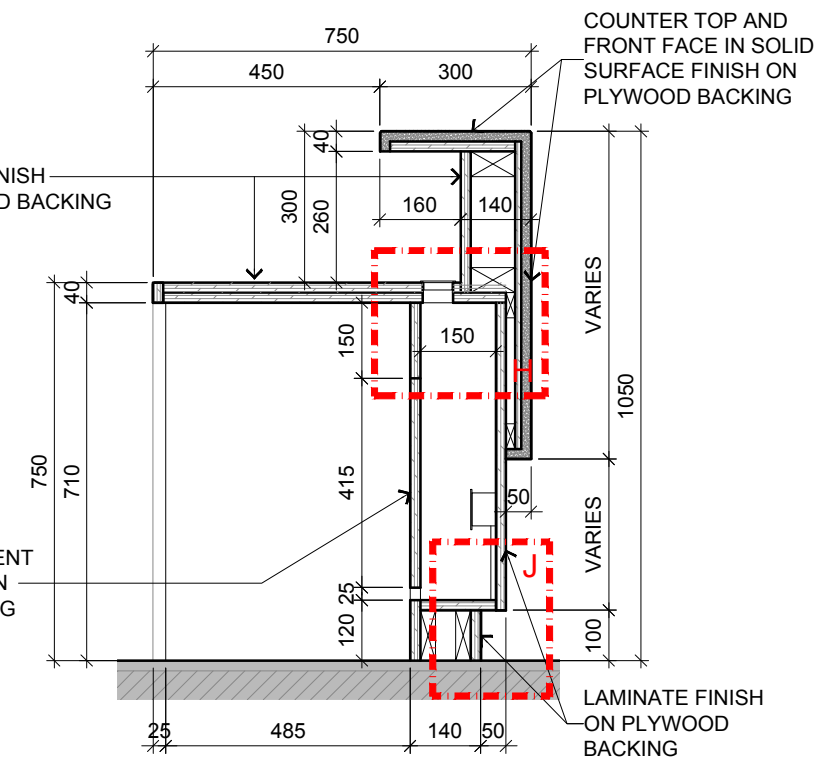
DETAIL H



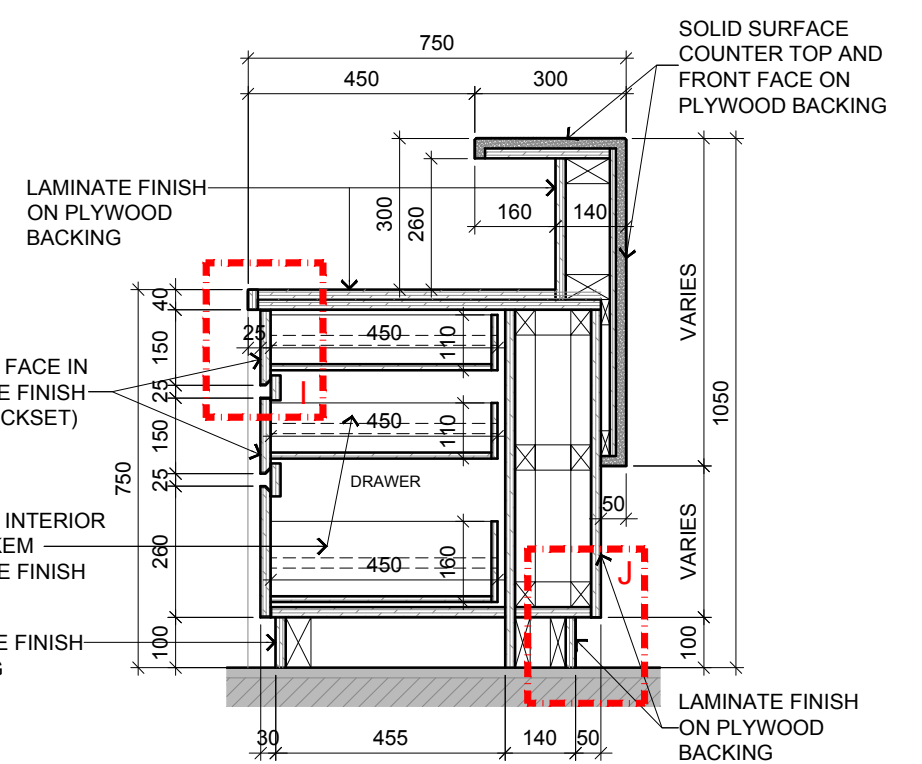
DETAIL I



DETAIL J



17 BLOCK B GROUND FLOOR - LIBRARY  
RECEPTION COUNTER SECTION  
SCALE 1:15



18 BLOCK B GROUND FLOOR - LIBRARY  
RECEPTION COUNTER SECTION  
SCALE 1:15

DRAWER FACE IN LAMINATE FINISH (WITH LOCKSET)

DRAWER INTERIOR IN POLYKEM LAMINATE FINISH

LAMINATE FINISH SKIRTING

RC-04



ARCHITECTURE GROUP-STUDIO A  
CPG CONSULTANTS PTE LTD  
1 GATEWAY DRIVE #25-01  
WESTGATE TOWER, SINGAPORE 608531  
TEL: 6357 4888 FAX: 6357 4188

©2014, CPG Consultants Pte Ltd reserves all rights to these drawings, designs and/or any other data contained herein. No part of the said drawings, designs and/or other data may be reproduced, modified, transmitted or used in any form or by any means for any purpose without the prior written consent of CPG Consultants Pte Ltd other than the sole purpose for which such drawings, designs and/or other data are provided to licensed users on such terms as CPG Consultants Pte Ltd may prescribe.

Job Title  
INTERIOR DESIGN WORKS FOR PROPOSED KDU PENANG  
@ BATU KAWAN, PENANG MALAYSIA  
Drawing Title  
RC-04 LIBRARY RECEPTION COUNTER DETAILS  
BLOCK B GROUND FLOOR

Senior Vice President  
TAN PHENG CHEE  
Vice President  
PATRICK TAN  
Principal Interior Designer  
BETH SONCUYA  
Principal Architectural Associate  
-  
Architectural Associate  
-

CONSTRUCTION DRAWING					
Drawn By	TEAM			Date:	16 FEB 2017
Checked By	BETH			Date:	16 FEB 2017
Project Code :	Drawing No. :	REV.	Scale :	AS SHOWN	
P5679	ID-RC-B-402-05	-	CAD Ref.		