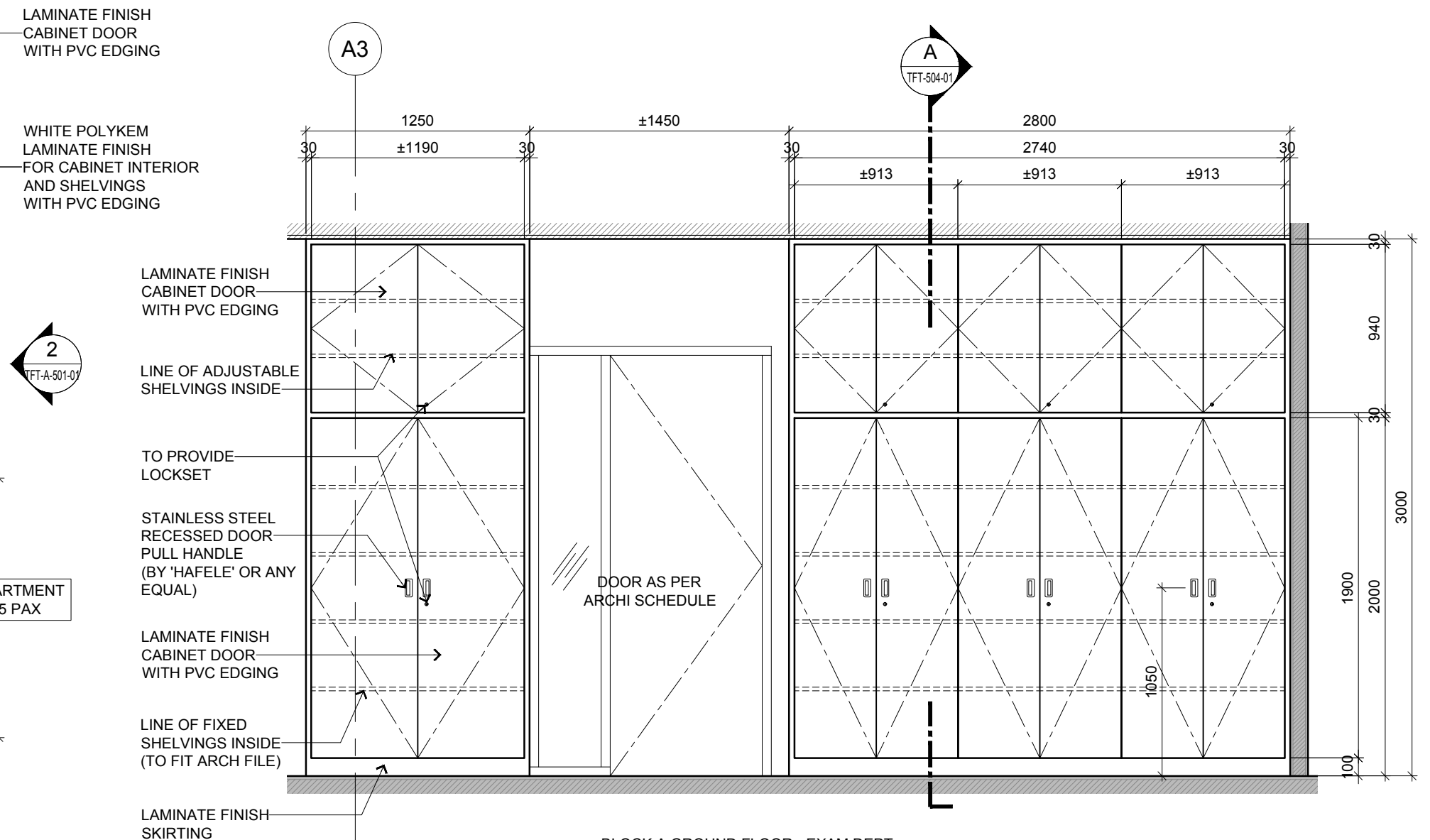


1 BLOCK A GROUND FLOOR - EXAM DEPT
FULL HEIGHT CABINET PLAN DETAILS
SCALE 1:30



2 BLOCK A GROUND FLOOR - EXAM DEPT
FULL HEIGHT CABINET ELEVATION DETAILS
SCALE 1:30



ARCHITECTURE GROUP-STUDIO A
CPG CONSULTANTS PTE LTD
1 GATEWAY DRIVE #25-01
WESTGATE TOWER, SINGAPORE 608531
TEL: 6357 4888 FAX: 6357 4188

©2014, CPG Consultants Pte Ltd reserves all rights to these drawings, designs and/or any other data contained herein. No part of the said drawings, designs and/or other data may be reproduced, modified, transmitted or used in any form or by any means for any purpose without the prior written consent of CPG Consultants Pte Ltd other than the sole purpose for which such drawings, designs and/or other data are provided to licensed users on such terms as CPG Consultants Pte Ltd may prescribe.

Job Title
INTERIOR DESIGN WORKS FOR PROPOSED KDU PENANG
@ BATU KAWAN, PENANG MALAYSIA

Drawing Title
FULL HEIGHT CABINET TYPICAL FITMENT DETAILS
BLOCK A GROUND FLOOR

Senior Vice President	TAN PHENG CHEE
Vice President	PATRICK TAN
Principal Interior Designer	BETH SONCUYA
Principal Architectural Associate	-
Architectural Associate	-

CONSTRUCTION DRAWING					
Drawn By	TEAM		Date:	16 FEB 2017	
Checked By	BETH		Date:	16 FEB 2017	
Project Code :	Drawing No. :	REV.	Scale :	1:30	
P5679	ID-TFT-A-501-01	-	CAD Ref.		