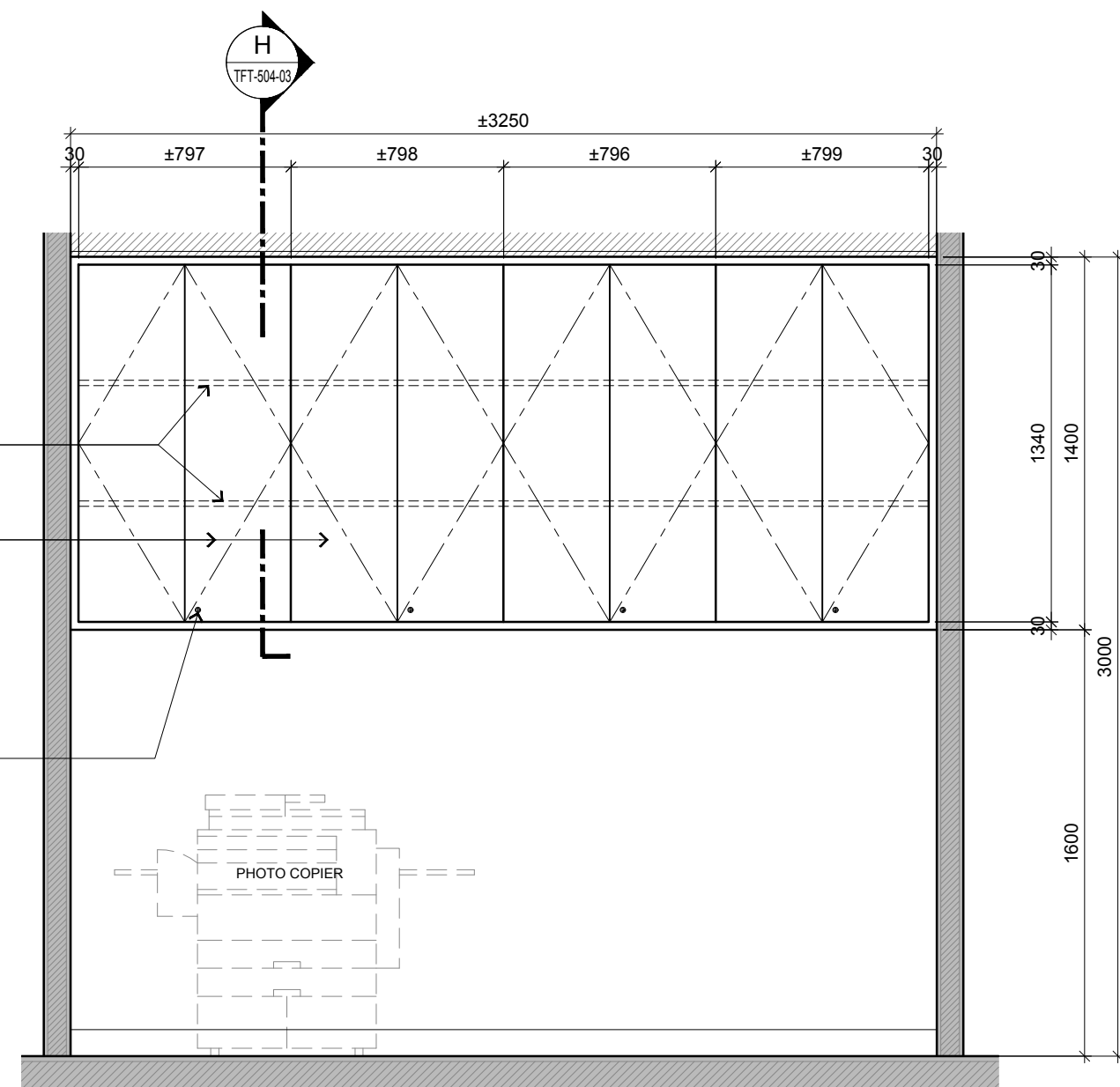


BLOCK A GROUND FLOOR - BURSARY + STORAGE  
**5 FULL HEIGHT CABINET ELEVATION DETAILS**  
 SCALE 1:25

- LAMINATE FINISH CABINET DOOR WITH PVC EDGING
- LINE OF ADJUSTABLE SHELVINGS INSIDE
- LOCKABLE CABINET DOOR PANEL IN SELECTED LAMINATE FINISH WITH PVC EDGING
- FIXED OPEN SHELVINGS IN SELECTED LAMINATE FINISH WITH PVC EDGING
- TO PROVIDE LOCKSET
- COUNTER TOP IN SELECTED LAMINATE FINISH WITH PVC EDGING
- LAMINATE FINISH CABINET DOOR WITH PVC EDGING
- LINE OF FAX MACHINE
- LAMINATE FINISH SKIRTING



BLOCK A GROUND FLOOR - AUTOMATION ROOM  
**6 TOP HUNG CABINET ELEVATION DETAILS**  
 SCALE 1:25

**CONSTRUCTION DRAWING**



ARCHITECTURE GROUP-STUDIO A  
**CPG CONSULTANTS PTE LTD**  
 1 GATEWAY DRIVE #25-01  
 WESTGATE TOWER, SINGAPORE 608531  
 TEL: 6357 4888 FAX: 6357 4188

©2014, CPG Consultants Pte Ltd reserves all rights to these drawings, designs and/or any other data contained herein. No part of the said drawings, designs and/or other data may be reproduced, modified, transmitted or used in any form or by any means for any purpose without the prior written consent of CPG Consultants Pte Ltd other than the sole purpose for which such drawings, designs and/or other data are provided to licensed users on such terms as CPG Consultants Pte Ltd may prescribe.

Job Title	Senior Vice President
INTERIOR DESIGN WORKS FOR PROPOSED KDU PENANG @ BATU KAWAN, PENANG MALAYSIA	TAN PHENG CHEE
	Vice President
	PATRICK TAN
	Principal Interior Designer
	BETH SONCUYA
Drawing Title	Principal Architectural Associate
<b>FULL HEIGHT &amp; TOP HUNG CABINET TYPICAL FITMENT DETAILS, BLOCK A GROUND FLOOR</b>	Architectural Associate

Drawn By	TEAM	Date: 16 FEB 2017
Checked By	BETH	Date: 16 FEB 2017
Project Code : P5679	Drawing No. : ID-TFT-A-501-05	REV. -
		Scale : 1:25
		CAD Ref.