

1
BLOCK C GROUND FLOOR - MAINTENANCE DEPT
FULL HEIGHT & TOP-HUNG CABINET PLAN DETAILS
SCALE 1:40

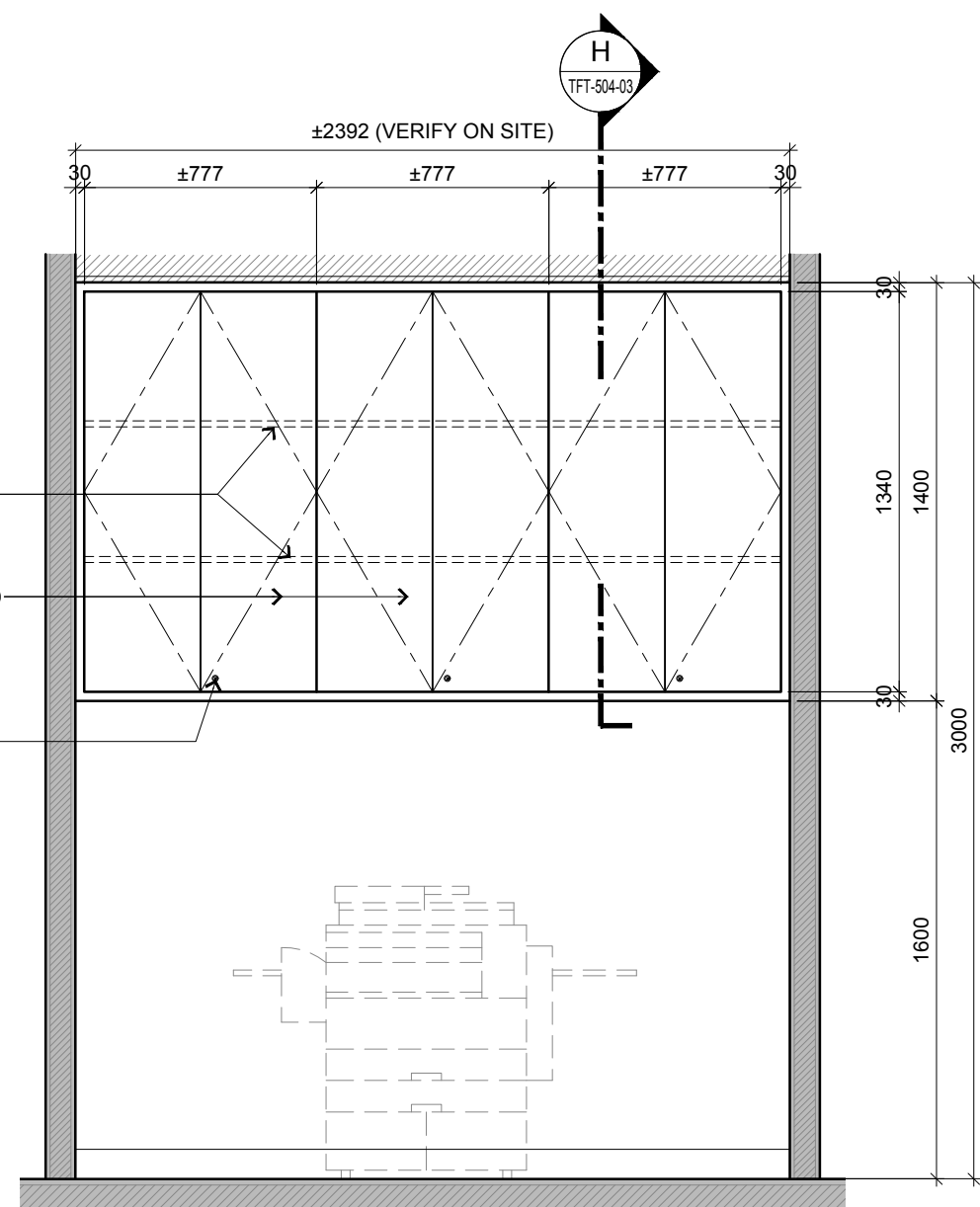
LINE OF ADJUSTABLE
SHELVINGS INSIDE

LOCKABLE CABINET
DOOR PANEL IN SELECTED
LAMINATE FINISH WITH
PVC EDGING (PL8)

TO PROVIDE
LOCKSET

LAMINATE FINISH
CABINET DOOR
WITH PVC EDGING
(PL8)

WHITE POLYKEM
LAMINATE FINISH
FOR CABINET INTERIOR
AND SHELVINGS
WITH PVC EDGING



2
BLOCK C GROUND FLOOR - MAINTENANCE DEPT
TOP-HUNG CABINET ELEVATION DETAILS
SCALE 1:25



ARCHITECTURE GROUP-STUDIO A
CPG CONSULTANTS PTE LTD
1 GATEWAY DRIVE #25-01
WESTGATE TOWER, SINGAPORE 608531
TEL: 6357 4888 FAX: 6357 4188

©2014, CPG Consultants Pte Ltd reserves all rights to these drawings, designs and/or any other data contained herein. No part of the said drawings, designs and/or other data may be reproduced, modified, transmitted or used in any form or by any means for any purpose without the prior written consent of CPG Consultants Pte Ltd other than the sole purpose for which such drawings, designs and/or other data are provided to licensed users on such terms as CPG Consultants Pte Ltd may prescribe.

Job Title
INTERIOR DESIGN WORKS FOR PROPOSED KDU PENANG
@ BATU KAWAN, PENANG MALAYSIA

Drawing Title
FULL HEIGHT & TOP HUNG CABINET TYPICAL FITMENT
DETAILS, BLOCK C GROUND FLOOR

Senior Vice President	TAN PHENG CHEE
Vice President	PATRICK TAN
Principal Interior Designer	BETH SONCUYA
Principal Architectural Associate	-
Architectural Associate	-

TENDER DRAWING					
Drawn By	TEAM		Date:	30 MAR 2017	
Checked By	BETH		Date:	30 MAR 2017	
Project Code :	P5679	Drawing No. :	ID-TFT-C-503-01	REV.	Scale : AS SHOWN
					CAD Ref.