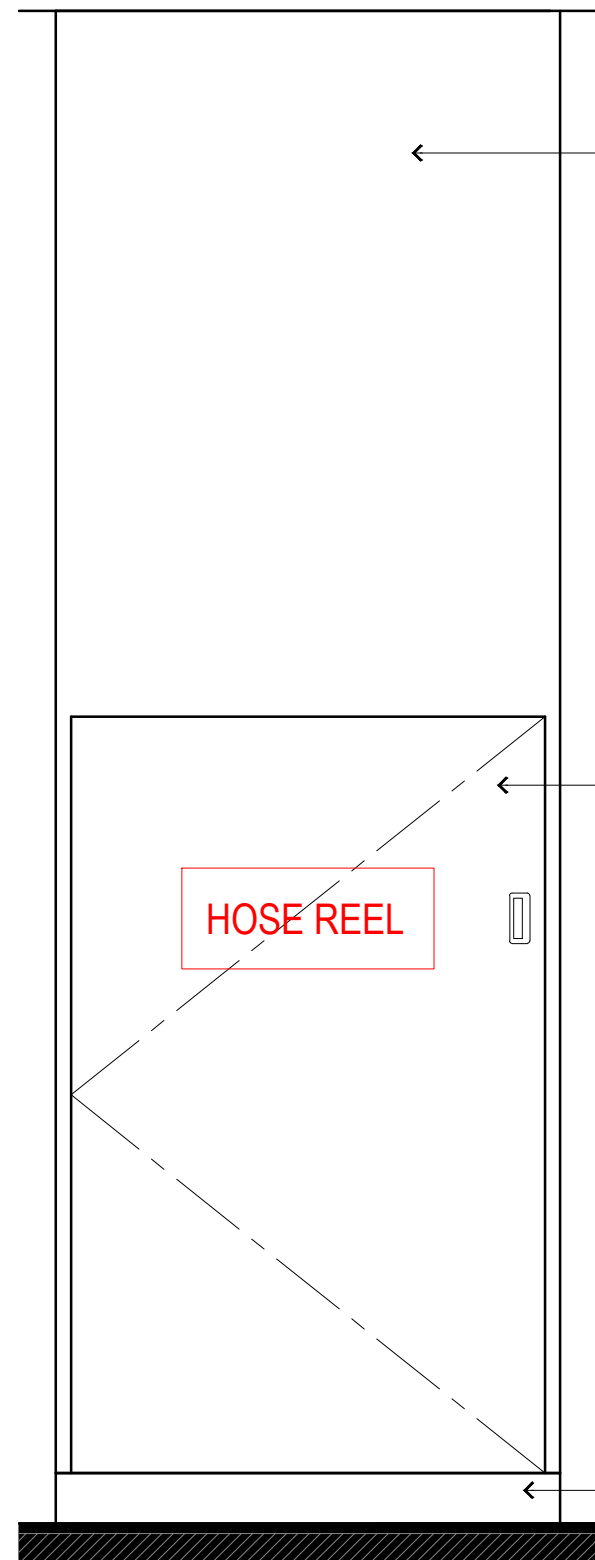


1
TYPICAL HOSE REEL CABINET
BLOW UP PLAN
SCALE 1:15



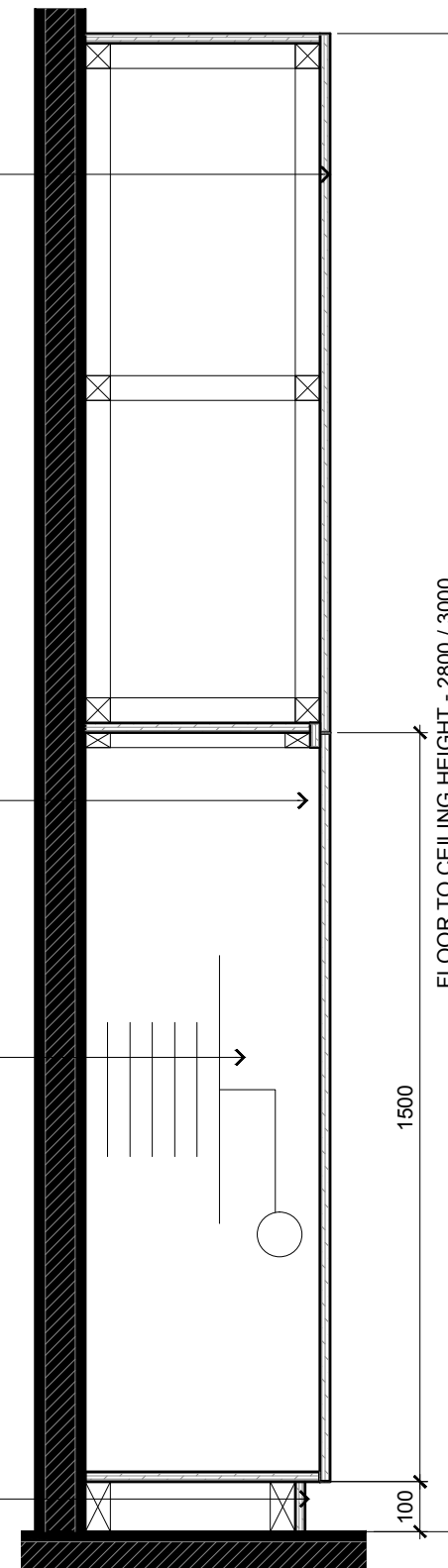
2
TYPICAL HOSE REEL CABINET
BLOW UP ELEVATION DETAILS
SCALE 1:15

← LAMINATE FINISH
BOXED-UP

← LAMINATE FINISH
CABINET DOOR
WITH PVC EDGING

WHITE POLYKEM
LAMINATE FINISH
FOR CABINET INTERIOR
WITH PVC EDGING

← LAMINATE FINISH
SKIRTING



3
TYPICAL HOSE REEL CABINET
BLOW UP SECTION DETAILS
SCALE 1:15

CONSTRUCTION DRAWING



ARCHITECTURE GROUP-STUDIO A
CPG CONSULTANTS PTE LTD
1 GATEWAY DRIVE #25-01
WESTGATE TOWER, SINGAPORE 608531
TEL: 6357 4888 FAX: 6357 4188

©2014, CPG Consultants Pte Ltd reserves all rights to these drawings, designs and/or any other data contained herein. No part of the said drawings, designs and/or other data may be reproduced, modified, transmitted or used in any form or by any means for any purpose without the prior written consent of CPG Consultants Pte Ltd other than the sole purpose for which such drawings, designs and/or other data are provided to licensed users on such terms as CPG Consultants Pte Ltd may prescribe.

Job Title
INTERIOR DESIGN WORKS FOR PROPOSED KDU PENANG
@ BATU KAWAN, PENANG MALAYSIA

Drawing Title
HOSE REEL TYPICAL CABINET DETAILS

Senior Vice President	TAN PHENG CHEE
Vice President	PATRICK TAN
Principal Interior Designer	BETH SONCUYA
Principal Architectural Associate	-
Architectural Associate	-

Drawn By	TEAM	Date: 16 FEB 2017
Checked By	BETH	Date: 16 FEB 2017
Project Code : P5679	Drawing No. : ID-TFT-504-04	REV. : - Scale : 1:15 CAD Ref.