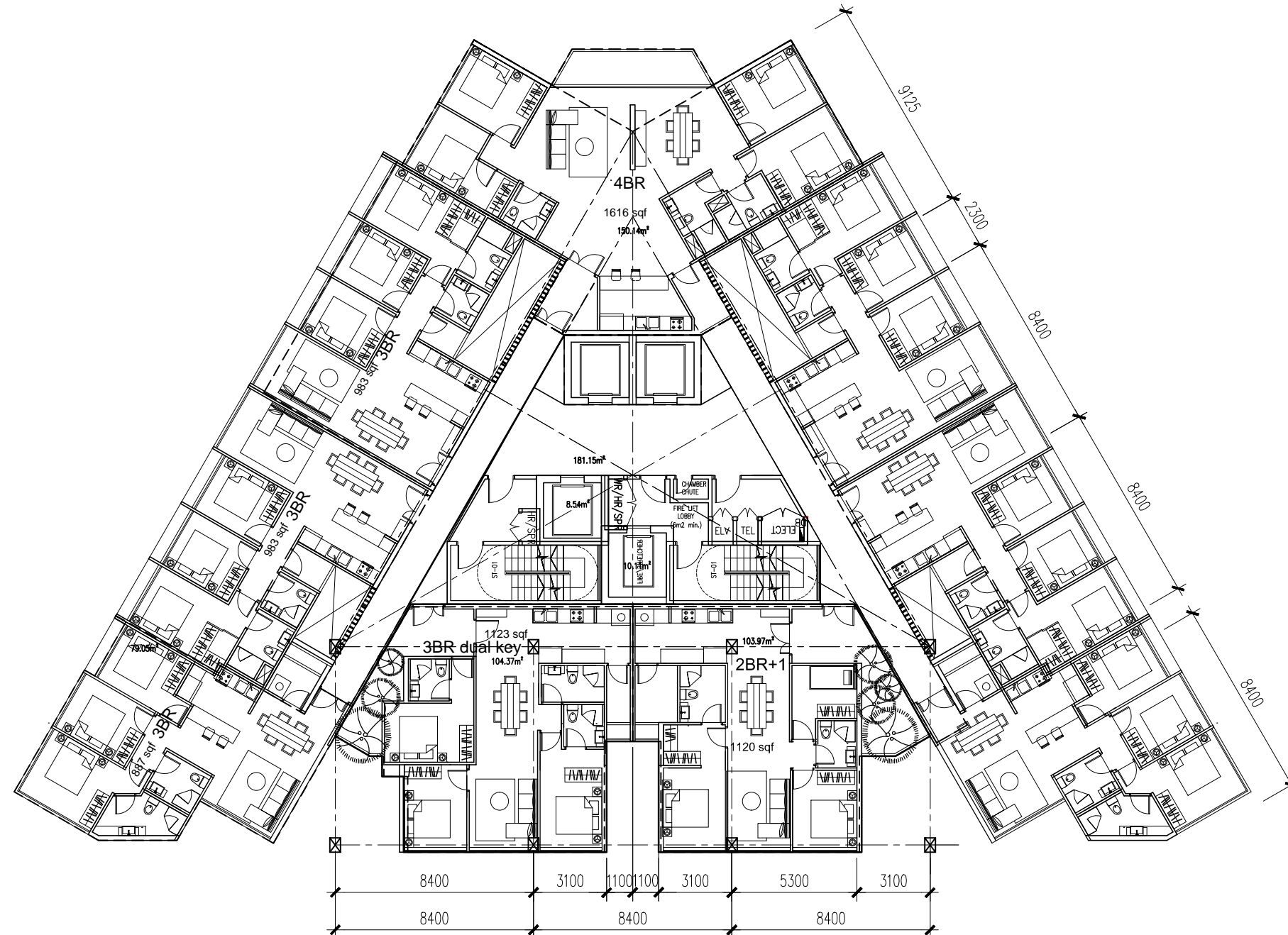




# SERVICE APARTMENT TYPICAL FLOOR PLAN

scale 1: 200

salable: 9565 sqf  
total GFA: 11345 sqf  
efficiency: 84 %



CPG CONSULTANTS PTE LTD  
238B, THOMSON ROAD, #12-00 TOWNER B  
NOVENA SQUARE, SINGAPORE 307685  
TEL : 63574401 FAX : 63574398

\* © 2002, CPG CONSULTANTS PTE LTD  
CPG CONSULTANTS PTE LTD RESERVES ALL RIGHTS TO THESE  
DRAWINGS, DESIGNS AND/OR ANY OTHER DATA CONTAINED  
HEREIN. NO PART OF THE DRAWINGS, DESIGNS AND/OR OTHER  
DATA MAY BE REPRODUCED, MODIFIED, TRANSMITTED OR USED IN  
ANY FORM OR BY ANY MEANS FOR ANY PURPOSE WITHOUT THE  
PRIOR WRITTEN CONSENT OF CPG CONSULTANTS PTE LTD. TO OTHER  
THAN THE SOLE PURPOSE FOR WHICH SUCH DRAWINGS, DESIGNS  
AND/OR OTHER DATA ARE PROVIDED TO LICENCED USERS ON  
SUCH TERMS AS CPG CONSULTANTS PTE LTD MAY PRESCRIBE.

NOTE :  
ALL DETAILS SHOWN IN DRAWING ARE INDICATIVE OF ARCHITECT'S  
DESIGN INTENT ONLY. CONTRACTOR IS TO CHECK/VERIFY ALL  
DIMENSIONS ON SITE & TO SUBMIT SHOP DRAWINGS & FIXING  
DETAILS FOR S.O.'S REVIEW & APPROVAL BEFORE COMMENCEMENT  
OF ANY FABRICATION WORKS.

SENIOR VICE PRESIDENT  
( ARCHITECTURE )

ARCHITECTURE ASSOCIATE  
( ARCHITECTURE )

PROJECT NO. : P5541

CADD NO. :

DRAWN BY :

CHECKED BY :

VAN ANH HOANG

VAN ANH HOANG

LEE SOO KHOONG

JOB TITLE :

PARAMOUNT COMMERCIAL  
MIXED USE DEVELOPMENT  
@ BATU KAWAN, PENANG, MALAYSIA

SCALE :

1 : 200

DATE :

24/07/2015

REVISION INDEX :

DRAWING TITLE :

SERVICE APARTMENT TYPICAL  
FLOOR PLAN

DRAWING NO. :

A300