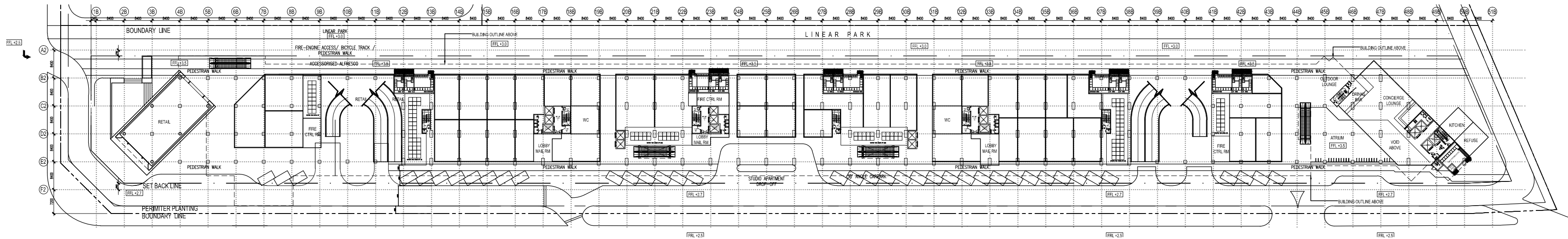
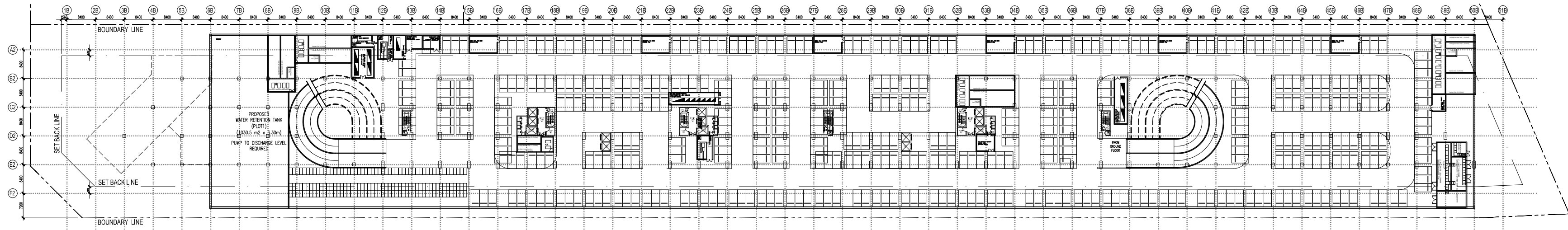


COMMERCIAL RETAIL - 1ST STOREY FLOOR PLAN
SCALE 1:1000



COMMERCIAL RETAIL - GROUND STOREY FLOOR PLAN
SCALE 1:1000



COMMERCIAL RETAIL - BASEMENT STOREY FLOOR PLAN
SCALE 1:1000
NO CAR PARK LOTS: 417



CPG CONSULTANTS PTE LTD
238B, THOMSON ROAD, #12-00 TOWNER B
NOVENA SQUARE, SINGAPORE 307685
TEL : 63574401 FAX : 63574398

* © 2002, CPG CONSULTANTS PTE LTD
CPG CONSULTANTS PTE LTD RESERVES ALL RIGHTS TO THESE
DRAWINGS, DESIGNS AND/OR ANY OTHER DATA CONTAINED
HEREIN. NO PART OF THE DRAWINGS, DESIGNS AND/OR OTHER
DATA MAY BE REPRODUCED, MODIFIED, TRANSMITTED OR USED IN
ANY FORM OR BY ANY MEANS FOR ANY PURPOSE WITHOUT THE
PRIOR WRITTEN CONSENT OF CPG CONSULTANTS PTD LTD OTHER
THAN THE SOLE PURPOSE FOR WHICH SUCH DRAWINGS, DESIGNS
AND/OR OTHER DATA ARE PROVIDED TO LICENCED USERS ON
SUCH TERMS AS CPG CONSULTANTS PTE LTD MAY PRESCRIBE.

NOTE :
ALL DETAILS SHOWN IN DRAWING ARE INDICATIVE OF ARCHITECT'S
DESIGN INTENT ONLY. CONTRACTOR IS TO CHECK/VERIFY ALL
DIMENSIONS ON SITE & TO SUBMIT SHOP DRAWINGS & FIXING
DETAILS FOR S.O.'S REVIEW & APPROVAL BEFORE COMMENCEMENT
OF ANY FABRICATION WORKS.

SENIOR VICE PRESIDENT
(ARCHITECTURE)

CYK

ARCHITECTURE ASSOCIATE
(ARCHITECTURE)

CWX

PROJECT NO. : P5541

DRAWN BY :

CWX

CADD NO. :

CHECKED BY :

JOB TITLE :
PARAMOUNT COMMERCIAL
MIXED USE DEVELOPMENT
@ BATU KAWAN, PENANG, MALAYSIA

SCALE :

1 : 1000

REVISION INDEX :

DATE :

14/08/2015

DRAWING TITLE :
PLOT 1: HOTEL & STUDIO APARTMENTS
COMMERCIAL RETAIL
BASEMENT, GROUND & 1ST FLOOR PLANS

DRAWING NO. :

A-250